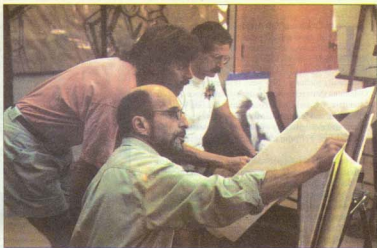


OKLAHOMA FALL ARTS INSTITUTES 1995 CATALOGUE OF WORKSHOPS



CHORAL MUSIC • THEATRE • WRITING
VISUAL ARTS • PHOTOGRAPHY



SEPTEMBER - OCTOBER, 1995

QUARTZ MOUNTAIN
LONE WOLF, OKLAHOMA



COURSE DESCRIPTIONS AND
REGISTRATION INFORMATION ENCLOSED



OKLAHOMA ARTS INSTITUTE

JOIN US AT QUARTZ MOUNTAIN!

THE OKLAHOMA FALL ARTS INSTITUTES

WEEKEND RETREATS FOR AMATEUR AND PROFESSIONAL ARTISTS, PUBLIC SCHOOL TEACHERS AND COLLEGE EDUCATORS

The Oklahoma Fall Arts Institutes are a series of four-day weekend workshops in the arts for adults, ages 21 and over. The program is administered by the Oklahoma Arts Institute, and serves as the sister program to the Oklahoma Summer Arts Institute: a nationally acclaimed two-week residential school for Oklahoma teenagers. Both programs take place at Quartz Mountain Arts and Conference Center in Lone Wolf, Oklahoma, and feature intensive daily class sessions taught by an outstanding faculty of nationally respected professional artists. For prior OFAI faculty, see page 13.

Both programs are supported by a unique partnership of individuals, businesses, corporations, and foundations. In addition, the Institute is supported and endorsed by the State Arts Council of Oklahoma, the State Department of Education, the Oklahoma Tourism and Recreation Department, and the Oklahoma State Regents for Higher Education. Oklahoma public school teachers are eligible for scholarships.

The workshops take place in airy studio pavilions behind Quartz Mountain lodge. Each pavilion is furnished with bathrooms, heat and air-conditioning, and a wooden deck overlooking the lake. Participants are housed with room-mates in quiet cabins down the road, or in rooms within the lodge itself. All facilities are located within

Quartz Mountain State Park, twenty miles north of Altus in Southwest Oklahoma. The park shelters hundreds of species of native plants and animals. Workshop participants may step out of their cabin in the morning to find deer grazing along the road. The lake is host to migrating pelicans, osprey and the American Bald Eagle.

It is surprising how much can be accomplished in just four short days at the Fall Arts Institutes. Each day includes 3-hour morning and afternoon class sessions, plus evening presentations and question and answer periods with faculty artists. In addition, a chamber music concert, affectionately known as "Eine kleine Quartzmusik" is held each Friday evening throughout the Institutes. The Quartz Mountain landscape offers ample opportunities for hiking, rock-climbing and birdwatching. Communal meals give participants a chance to unwind between classes and meet other artists from across the state.

The Oklahoma Fall Arts Institutes offer adults a unique opportunity to retreat from the demands of a work-a-day world and immerse themselves in the concentrated study of their chosen art form. During the Fall Institutes, Quartz Mountain becomes a small supportive community of dedicated artists. The beautiful and isolated location add to the feeling of seclusion, peace, and focus. Participants of the Fall Arts Institutes, be they university or public school educators, professional or amateur artists, all return with a sense of renewal, accomplishment and enthusiasm. We hope you will join us at Quartz Mountain in 1995.

Workshop participants take a break and enjoy the view from the pavilion decks at Quartz Mountain Arts and Conference Center.



Maxine Warren, Ponca City, works on a painting at the 1994 Oklahoma Fall Arts Institutes.

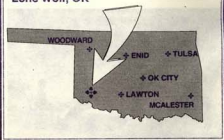


"My experiences with the OFAI have all been beyond what I expected. To be involved with such instructors and students is an experience every artist and educator should participate in." - Mariana McGrew, Lawton

FIRE ON THE MOUNTAIN: A CHANCE TO REBUILD

In February, a fire destroyed a large part of Quartz Mountain Lodge. The Oklahoma Arts Institute, in partnership with the Oklahoma Department of Tourism and with local community organizations, has launched a recovery program we call "Operation Phoenix" which will allow the 1995 Oklahoma Fall Arts Institutes to take place as scheduled. The Institute's studio pavilions were undamaged, but the loss of the kitchen will require special cooking and dining arrangements to be made, and some housing may be lost. At press time, we are still unable to give specific details about workshop conditions at Quartz Mountain, but participants will be notified as the situation develops. We appreciate your patience with us as we work to rebuild. For information on how you can help with Operation Phoenix, see page 23.

Quartz Mountain
Arts & Conference Center
Lone Wolf, OK



WORKSHOP INFORMATION

CHORAL MUSIC • THEATRE • PHOTOGRAPHY • VISUAL ARTS • WRITING

The 1995 Oklahoma Fall Arts Institutes are a series of weekend retreats designed for amateur and professional artists, public school teachers and college educators, 21 years of age or older. The workshops provide to participants an intensive, hands-on arts education experience and an opportunity for artistic self-renewal. In 1995, workshops are offered in Choral Music, Theatre, Photography, Visual Arts and Writing.

Registration and Waiting Lists

To enroll, interested individuals should complete the enclosed registration form and send it to the OAI office with a \$125 deposit. A \$25 registration processing fee, which is non-refundable, is included in this amount. The deposit is necessary in order to confirm your place in the workshop. Public school teachers who are applying for State Department of Education Honor Awards and college educators who are applying for faculty development funds may reserve workshop space with a \$25 non-refundable processing fee. (Application forms for teacher awards are available through the Oklahoma Arts Institute office.) Registration forms without the necessary deposit will not be processed. There is no deadline for registration. However, some workshops fill quickly, and early registration is strongly suggested. Participants are confirmed in the workshop upon receipt of their registration form and deposit, and are notified of confirmation by mail. A letter including class supply needs and other preparatory information will follow.

At course capacity, a waiting list is automatically formed in the order in which applications are received. Applicants on the waiting list will be refunded their deposit, less the \$25 processing fee. Those selected from the waiting list are notified by telephone as space becomes available.

Workshop Costs

Although the tuition fee is quoted at \$450, the total cost per participant of each workshop is \$900. Through private donations, the Oklahoma Arts Institute is able to reduce tuition fees by underwriting each participant in the amount of \$450. The remaining cost to the participant of \$450 includes tuition (\$300), double-occupancy lodging and meals (\$125), and a non-refundable \$25 processing fee. A minimum deposit of \$125 must accompany registration in order to confirm your enrollment. The balance of the fee is due 14 days prior to the workshop starting date. If you fail to pay your balance 14 days prior to the start date, your space in the workshop may be forfeited and your place filled from the waiting list.

In addition to tuition fees, some workshops may require a materials fee or model fee. If a materials fee is required, you will be notified in the letter which outlines supply requirements.

Housing

All housing is double-occupancy. Housing arrangements must be made through the Oklahoma Arts Institute. Reservations will not be accepted by Quartz Mountain Lodge.

In addition to lodge rooms, housing facilities include dormitories and cabins or duplexes with kitchens and living rooms which accommodate from two to four people. Access to a car is advisable for those with cabin or duplex accommodations.

Arrival and Departure

Each Institute begins Thursday afternoon and runs through Sunday at noon. Check-in begins at 11:00 a.m. on Thursday. There is a 1:00 p.m. orientation, followed by the first class at 2:00 p.m. Check-out time on Sunday is 1:00 p.m.

Carpooling information is available for those who wish to travel to Quartz Mountain with other participants. Check the appropriate box on your registration form.

Graduate Credit

Institute participants may earn one hour of graduate credit through the University of Oklahoma or Oklahoma City University. Each university department designates specific fee requirements and assignments for students who wish to receive credit. Those interested in graduate credit should check the appropriate box on your registration form and contact the universities directly. At the University of Oklahoma, call Phyllis Walls, Department of Continuing Education, (405) 325-1947. At Oklahoma City University, those applying for graduate credit will need to contact the head of the department from which they are requesting credit (Art, Music, Performing Arts, Liberal Arts, etc.). Call the Oklahoma Arts Institute office for specific contacts and addresses.

Meals

Meals are served buffet style, except for a seated dinner on Thursday evening. Meals included are dinner Thursday evening; breakfast, lunch and dinner on Friday and Saturday; and breakfast on Sunday morning. Vegetarian options are available upon prior request. Due to the recent fire at Quartz Mountain Lodge, meals will be served in buildings erected on site for this purpose.

Staff Development Credit

For public school teachers, the Institute can provide a certificate of participation to help them meet Staff Development requirements as mandated by House Bill 1017. Interested teachers should check with your district's staff development coordinator.

Scholarships

We are pleased to announce that the Oklahoma State Department of Education is once again offering "Honor Awards" to Oklahoma public school teachers. Application forms and information regarding these awards are available through the Oklahoma Arts Institute offices. DEADLINE FOR APPLICATION IS JULY 3, 1995.

For college educators, many colleges and universities will provide scholarship monies from campus Faculty Development funds. If you are applying for funding from your college or university, please mark the appropriate box on the registration form, and we will hold your workshop space for a \$25 registration fee.

We encourage other participants with financial need to seek scholarship sources within your communities. Possible sources of local funding are Arts and Humanities councils, civic clubs and community businesses or corporations.

Refund and Cancellation Policies

If after your enrollment you are unable to attend a workshop for any reason, please notify the Oklahoma Arts Institute immediately so that your place may be filled by an applicant from the waiting list.

If you cancel more than 14 days before the first day of the workshop, your tuition, minus the \$25 processing fee, will be refunded. If your cancellation is received after the 14 day deadline, and your workshop place cannot be filled, your \$125 deposit will be forfeited.

In the instance that the Institute is forced to cancel a class, the full deposit including the application fee will be refunded. The Institute reserves the right to substitute faculty members. In all such cases, an attempt will be made to inform participants of a faculty change, but time constraints sometimes make it impossible to do so. If faculty replacements must be made at the last minute, we ask for your understanding of these circumstances.

Questions?

Call, fax or write the Oklahoma Arts Institute - P.O. Box 18154, Oklahoma City, OK 73154. Phone: (405) 842-0890 FAX: (405) 848-4538.

Office hours are 8:00 a.m. to 5:00 p.m. Central Time, Monday through Friday.

1995 OFAI Workshop Dates

Choral Music
Theatre
Photography
Visual Arts
Writing

September 28 - October 1
September 28 - October 1
October 5 - 8
October 12 - 15
October 26 - 29

SEPTEMBER 28 - OCTOBER 1

CHORAL MUSIC

1995 OKLAHOMA FALL ARTS INSTITUTES

The workshop will explore the strengths and weaknesses of common verbal and non-verbal language in the rehearsal. Techniques to maximize singer involvement and learning will be investigated. Time saving rehearsal procedures and relationships between conductor posture and movement and the choral response will be examined. Sessions will include:

- 1) Exploration of the impact of non-verbal on performance and behavior in the rehearsal.
- 2) Finding new ways to express commonly ignored teacher instructions such as "sit up," "get your head out of the music," etc.
- 3) Exploration of the use of movement to encourage healthy singing and the use of the non-verbal to assist singers in singing in tune, achieving rhythmic accuracy, etc.
- 4) Using multicultural music to enhance the choral program.
- 5) Master Class conducting.



Choral music participants Linda Jones, Norman, and Ron Waddell, Bethany



Rodney Eichenberger

Rodney Eichenberger, Professor of Choral Music Education, joined the Florida State University faculty in 1990. His duties include conducting the Graduate Choir and teaching graduate choral conducting and choral techniques. Mr. Eichenberger has guest conducted and lectured throughout the world. His instructional video on choral conducting entitled "What They See is What You Get" was released by Hinshaw Music Company in November 1994.

SEPTEMBER 28 - OCTOBER 1

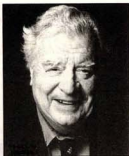
THEATRE

1995 OKLAHOMA FALL ARTS INSTITUTES

Acting

This workshop will take a theatrical, non-academic approach to the works of Shakespeare. The focus will be upon three tragedies and three comedies: MacBeth, Hamlet, Othello, Twelfth Night, A Midsummer Night's Dream, and the Merry Wives of Windsor.

Participants will work one on one with Mr. Campbell in scenework as well as take part in group discussion and critique.



Douglas Campbell

A veteran of the stage, Douglas Campbell has been celebrated in Toronto for his 50 years in the theatre. His career began in Britain, and 37 years ago he was lured to Canada by Tyrone Guthrie for the inaugural season of the Stratford Festival. Mr. Campbell also co-founded the Canadian Players. He has played characters ranging from Alfred P. Doolittle to Henry VIII in a career that has encompassed stage, film, television and radio. Mr. Campbell has acted and directed for every major theatre across Canada and for the Goodman Theatre in Chicago, the Mark Taper Forum in Los Angeles, the Chicago Lyric Opera and the Guthrie Theatre in Minneapolis.

THEATRE CONTINUED

1995 OKLAHOMA FALL ARTS INSTITUTES

Peggy O'Brien



Peggy O'Brien is known nationally as a vibrant and exciting teacher and speaker. As Director of Education Programs at the Corporation for Public Broadcasting, she currently plans and administers public broadcasting education initiatives - Shakespeare and beyond - which involve learners and teachers of every age and stage. For thirteen years as Head of Education at the Folger Shakespeare Library, she created and taught in a wide range of Shakespeare education programs in Washington, across the United States, and in the United Kingdom with the Royal Shakespeare Company. She founded and for ten years directed the Folger's Teaching Shakespeare Institute; she is general editor of Shakespeare Set Free, a three-volume series of books on the teaching of Shakespeare. She speaks and writes for a national audience about education, and her work has received national recognition. O'Brien is the recipient of the Humanities Council Award as well as honorary degrees from Trinity College and Georgetown University.

Experiencing Shakespeare

This workshop will focus on experiencing Shakespeare in a variety of ways, all of them active. The class will begin with a bit of context-setting with regard to Shakespeare and the Renaissance, and then center the workshop on two plays: *Macbeth* and *Twelfth Night*. The body of criticism, except our own, will be avoided altogether. The group will explore plays and play-writing through direct interaction with those words that have kept people coming back to Shakespeare for centuries. The course will feature scene work, voice work, close reading, examination of text, character work, and comparative analysis by means of video. Participants at any stage in their own Shakespeare education will learn plenty and have a good time doing it.



Michael Tolaydo

Michael Tolaydo is artistic director of The Travelling Shakespeare Company, Professor of Theatre at St. Mary's College of Maryland, and artistic director of Bill's Buddies, the educational touring company produced by the Folger Shakespeare Library. He is both a director and an actor, appearing on Broadway in numerous productions, including *Edward II*, *The Three Sisters*, and *A Moon for the Misbegotten*. He also appeared with the Washington Opera and has toured Africa and the U.S. with *St. Mark's Gospel*, a one-man show directed by Alec McGowen. At the Folger Shakespeare Theatre, Michael has played numerous and diverse roles. Most recently - during the 1994-95 season - he played Richard III and Shylock. For ten years, he has served as actor / director in residence at the Folger

Library's Teaching Shakespeare Institute. He has published articles on the teaching of Shakespeare and has taught Shakespeare to students and teachers of all ages.



Lisa Carnahan, *Seize*, delivers a monologue for the Acting workshop.

What Makes a Good Director?

Actors, directors, writers, producers and audience members have been asking this question for about a century now. This workshop will be the latest attempt to definitively answer the question.



James Nicola

James Nicola, a graduate of Tufts University, is in his eighth season as Artistic Director of the New York Theatre Workshop. His regional theatre credits include *American Splendor*, *Light up the Sky*, *Night Mother*, *The Marriage of Bette and Boo*, *Stray Dogs*, and *Still Life* at the Arena Stage. He has also directed at the New Playwrights' Theatre, Round House Theatre, and Studio Theatre. Nicola serves as Producing Associate for the Arena Stage where he developed and produced the Play-Lab and Stage Four series of new plays. He is the recipient of Washington Theatre's Community Service Award as co-chair of Washington's Non-Traditional Casting Symposium. He serves as the Casting Coordinator at NYSP.

OCTOBER 5 - 8

PHOTOGRAPHY

1995 OKLAHOMA FALL ARTS INSTITUTES



The Alternative and Extended Print

This workshop is concerned primarily with an open exchange of ideas, non-silver and extended techniques, experiments, processes and investigations into alternative photographic image making, resulting in new directions, options and energy for each participant and his or her work. This will be a hands-on workshop and in the time that we have, we will work with and explore cyanotype and chemical toning of cyanotype, Van Dyke, gum bichromate, platinum/palladium and multiple combinations of techniques involving these processes. We will also cover: hand-applied emulsions, toning, Polacolor and laser transfer techniques, pinhole and alternative cameras and whatever else happens to interest participants.

Christopher James

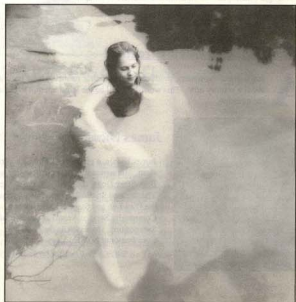
Christopher James is an internationally known artist / photographer and writer whose paintings and hand-worked images have been exhibited in galleries and museums in this country and abroad. His photographs have been published and exhibited extensively, including shows in the Museum of Modern Art, the Metropolitan Museum of Art, Eastman House and galleries including Witkin, Weston, and Lizardi / Harp. Christopher recently left Harvard University where he taught for 13 years and was Department Chair. He is currently Department Chair at the Art Institute of Boston, Creative Director of Zephyr Graphics and co-owner of Steele & James, a company creating monolithic environmental and architectural art in stone.

The Personal Landscape

What are the sensual, visceral and tactile qualities the landscape evokes? This workshop will present the formal and conceptual, and metaphoric and symbolic ways of using the camera to describe reality and transcend the "real" world. Sally Gall will focus on developing what is original and imaginative in each participant's work as expressed through photographing the natural world. Initial portfolio reviews will be followed by assignments, individual and group critiques, slide presentations, hands-on darkroom work, and field trips. Participants may choose to photograph in any format. While the emphasis will be on black and white photography, they may elect to work with E-6 process color slide film.

Sally Gall

Sally Gall is a fine-art photographer and teacher whose black and white landscape work is seen in major magazines as editorial and advertising illustrations. Her images illustrate Kodak's current black and white film campaign, appear in traveling exhibitions, *Aperture*, *American Photo* and travel magazines. Sally works in both black and white and color, primarily with medium-format cameras. She currently instructs at ICP and the School for Visual Arts in New York City. She received an NEA Grant in 1983 and MacDowell Fellowships in 1988 and 1989.



Extending the Image: Portraiture and Beyond

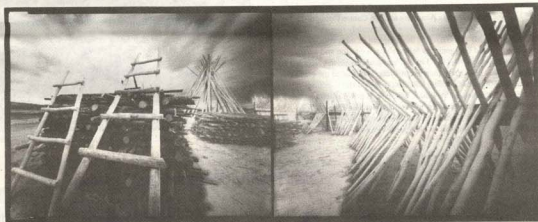
Consider the Portrait: "If a single picture is worth a thousand words, imagine the possibilities of two, three, or more photographs working together to convey more complex layers of meaning," proposes Dater. This workshop will explore the psychological, emotional, associative, and narrative potential of the portrait, as well as the use of multiple images to produce extended portraits or tableaux. The emphasis will be on working in black and white with natural light. You will learn about scale, content, sequencing and presentation. Participants will use themselves, each other, and individuals from the community as models. There will be hands on photographing with assignments, critiques, illustrated lectures, and discussions.

Judy Dater

Judy Dater is recognized today as one of our most intensely personal portrait photographers. Her recent work goes beyond the traditional definition of portrait photography, and includes the more contemporary approaches presented in this workshop. Ms. Dater has been photographing, teaching and



lecturing throughout the world for thirty years. Her work is included in many prestigious collections, and is exhibited internationally.



Pinhole Photography

In exploring pinhole photography, the photographer departs from the world of hi-tech, equipment-oriented photography to one of simplicity. During this workshop, participants will construct personal cameras to suit their individual aesthetic requirements. Students will explore the usage of single and multiple cameras (diptychs, triptychs, etc), color and B&W film, and paper negatives, as well as the conversion of existing cameras and/or "found" containers into pinhole cameras. In addition, there will be a survey of historical and contemporary pinhole photography, daily field trips, and critiques of work produced during the workshop. Students will have access to Polaroid materials for immediate feedback as well as standard sheet film. This will be a hands-on workshop with emphasis on photographing and experimentation; the workshop will be geared towards both experienced and inexperienced pinhole photographers.

Craig Barber

Craig J. Barber is a photographer who travels and works exclusively with the pinhole format. He focuses on inhabited landscapes, both here and abroad. His work has been exhibited throughout the U.S. and Europe and has received grants from the Seattle Arts Commission and the Polaroid Corporation, as well as Light Work and MacDowell Fellowships. He is currently working on a body of work from Southeast Asia.

OCTOBER 12-15

VISUAL ARTS

1995 OKLAHOMA FALL ARTS INSTITUTES

Painting off the Subject

A concise but intense examination of the language of painting at its present state of continuing reinvention inherited from painters of the past. The work of Titian, Velasquez, Vermeer, Cezanne, Matisse, and Bonnard among others will be analyzed in slides. A technical review of the differing physical and optical properties of various pigments in oil. We will then begin an exploration of strategies in the deployment of colored marks on colored grounds to make the illusion of form, light and space while sensuously configuring shape, color resonance, and directional organization on the two dimensional surface. Enrollment is limited to intermediate and advanced painting students with some skills in drawing from perception.

James McGarrell

The paintings of James McGarrell may be found in virtually every important public art collection, including the Metropolitan Museum of Art, the Whitney Museum in New York City, the Hirshhorn Museum and Sculpture Garden in Washington, D.C., the Pennsylvania Academy and the Centre Georges Pompidou in Paris, among many others. His work is widely reproduced and much written about, and Mr. McGarrell is the recipient of numerous awards, including the Fulbright and Guggenheim fellowships, a citation and award from the National Institute of Arts and Letters, and grants from the National Endowment for the Arts. For more than twenty years, he headed the graduate painting program at Indiana University, and then taught at the Washington University School of Fine Arts in St. Louis, where he is now Professor Emeritus. He has served terms as Artist in Residence at The University of Chicago, Rice University and Dartmouth College. Since his retirement from teaching in 1993, he lives and works in Newbury, Vermont.



Color Woodcut Printmaking Workshop

An intensive and exciting workshop that will awaken the possibilities of the woodcut printing process for the beginning as well as advanced printmaker. This approach is not technically tradition-bound, but inventive with contemporary, creative methods that can be spontaneous, simple and direct. The participants will go from designing the image, cutting the blocks, to printing with oil-base inks and relief printing with an etching press as well as hand-printing. There will be a presentation of historical influences, demonstrations of process, sketch review and informal discussions of contemporary printmaking. Kunc will also demonstrate her use of stencils for her own multi-color reduction-block woodcut prints. Participants will cut and print their own woodcuts using the variety of techniques introduced.

Karen Kunc

Karen Kunc, Associate Professor at the University of Nebraska-Lincoln, has exhibited her woodcut prints and artist's books widely - in Iceland, Korea, Canada, Poland, Japan, and throughout the United States. Her work is included in the collections of the Library of Congress, the Philadelphia Museum of Art, the Victoria & Albert Museum, Walker Art Center and the Worcester Art Museum. She has conducted numerous workshops around the country and recently in Japan and Italy. Karen Kunc received her M.F.A. from Ohio State University and her B.F.A. from the University of Nebraska-Lincoln.

Illustrating Children's Books

This illustration class will give the participant an approach to the illustrated book by way of drawing upon his or her own technical approach, whether it be color, line or form. The artist brings the technique, and we will shape and hone it into an illustrative product which reaches a hypothetical market. Each participant in the class will start with a concept (a story) then we find the HOW: from approach of theme, to number of pages, color or black and white, type, binding, size of pages, to movement of pictures, and on and on. This is not, however, a drawing class. The only pre-requisite is that the participant be a paper artist (rather than canvas).

DeLoss McGraw

DeLoss McGraw was born in Woody Guthrie's hometown of Okemah, Oklahoma. He studied at East Central State University in Ada from 1963-1966. He continued his studies at Cranbrook Academy of Art, California State University at Long Beach and at the Otis Art Institute in Los Angeles. He has illustrated a number of books and has worked collaboratively with poet W.D. Snodgrass and Pulitzer Prize winning author N. Scott Momaday. McGraw's work is included in the collections of the Achenbach Foundation, Harvard University Houghton Collection, J. Paul Getty Museum, Library



of Congress, New York Public Library, the Whitney Museum Library Collection and other important collections.



Sculpture - Working with Granite

This workshop will take participants through all the steps necessary in the creation of limestone, marble and granite sculpture, beginning with the selection of stone. Participants will learn the use of all the tools used in stone sculpture, including the basics of carving with pneumatic air tools, cutting with diamond blades and shape carving with carborendium grinders as well as hand and machine polishing. Participants will select their own stone, and work on sculptures from 20 - 30 lbs in weight. Workshop includes field trips to Granite Quarry to select stone and learn about equipment and techniques for working larger stone pieces. Workshop sessions include portfolio reviews and discussions of trends in sculpture, abstract and figurative.

Jesus Bautista Morolés

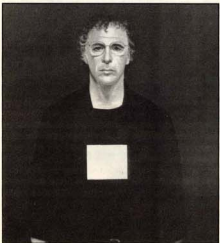
Morolés was born in Corpus Christi, Texas in 1950. He was raised in a Dallas barrio. He received his Bachelor of Fine Arts from the University of North Texas. He spent the year from 1978 - 79 in apprenticeship to figurative sculptor Luis Jimenez. After spending a year in Pietrasanta, Italy in 1979, Morolés began, in 1980, making the body of work for which he is widely known. In 1982, Morolés received the prestigious Awards in the Visual Arts Fellowship. Morolés most visible public sculpture is "Lapstrake" 1987, a massive 22 feet tall, 64 ton work located across from the Museum of Modern Art in New York. Morolés work has been included in over 50 one-person exhibitions and 95 group exhibitions worldwide. He has lectured extensively about his work and the issues of public sculpture. Morolés work has been the subject of numerous articles and reviews in *ArtNews*, *Arts*, *Artforum*, *Artspace*, *Artweek*, *Newsweek*, *Time*, and the *New York Times*.

Drawing

In this workshop, Alfred Leslie will work with everyone on an individual basis. Each student has different needs, starts from a different place. Recognizing that, Leslie sets a class project in motion after meeting the group. Each participant will work in any media he or she feels comfortable with, as drawings, from Leslie's perspective, can be made with any materials - paint, charcoal, pencil or sticks dipped in mud.

Alfred Leslie

Alfred Leslie is known internationally as an artist, author, and film producer. His paintings appear in numerous public collections, including the Art Institute of Chicago, the Hirshorn Museum and Sculpture Garden, Washington, D.C., the Museum of Fine Arts, Boston, the Museum of Modern Art, New York, the National Portrait Gallery, and the Whitney Museum of Art. He has exhibited extensively both in the U.S. and abroad. Leslie has received numerous awards, including NEA and Guggenheim fellowships, the American Institute of Arts and Letters Gold Medal of Merit, and the Drawing Artist Award for Lifetime Achievement from *American Artist* magazine. His film "The Last Clean Shirt," received the prize for Best Experimental Film at the Bergamo Italy Film Festival in 1964. He has painted portraits of Ronald Reagan, Yuri Andropov, and Joseph Pulitzer, among others. Leslie's play *The Cedar Bar* and his novel in verse *The Golden Age* are due for publication in 1996.



OCTOBER 26-29

WRITING

1995 OKLAHOMA FALL ARTS INSTITUTES



Poems as Teachers

The Art of Writing and Teaching

In this workshop we will experiment with lots of exercises designed to build up poetry muscle. We'll play with ways to begin poems, explore our sense of aesthetics and audience, and practice both time-honored and zany poetry "moves" to lead us into that unfamiliar territory where the poem starts to tell us what it wants to say. During class we'll consider participant, student, and model poems; share and invent poetry writing exercises; and explore the mechanics and modes of a wide array of poetics. Along the way we'll reflect on applications for our students—tantalizing assignments, thoughtful response to written work, classroom activities and attitudes that foster a sense of freedom and respect, discipline and possibility, depth and delight. While this workshop will be useful for classroom teachers, non-teachers are also very welcome. This workshop is for anyone who would like to write more varied, vivid and ambitious poems.



Robin Behn

Robin Behn directs the M.F.A. Program in Creative Writing at the University of Alabama and also serves on the faculty of the low-residency M.F.A. in Writing Program at Vermont College. Her first book of poems, *Paper Bird*, won the Associated Writing Programs Award Series in Poetry. Her second book, *The Red Hour* was published in 1993 by Harper Collins. Her poems have appeared in many journals and anthologies including *Poetry*, *American Poetry Review*, *Field*, *Iowa Review*, the Pushcart Prize anthology and *Best American Poetry*. Behn is also co-editor with Chase Twichell of *The Practice of Poetry: Writing Exercises from Poets who Teach*, a text widely used in poetry writing courses.

Biography and Autobiography

This workshop will focus on a range of forms of autobiography and biography written for publication, including memoirs, profiles, case histories - and self-descriptive personal essays such as students write to gain admission to college. Using examples of published work including journals and letters not evidently written for publication we will begin with general questions: How is the speaker constructed? How is the audience conceived? What ethical considerations does the genre of life-writing raise? What kinds of research are relevant to the different forms of life writing? As the workshop develops, we will turn to practical questions about beginnings, middles and ends.

Diane Middlebrook

Diane Middlebrook is a writer and a Professor of English at Stanford University. Her professional honors include Yale prizes for poetry and for her doctoral dissertation; and a fellowship from the National Endowment for the Humanities, among others. Middlebrook's biography of the poet Anne Sexton spent eight weeks as a New York Times Best Seller in 1991. It was a finalist for the National Book Award and for the National Book Critics Circle Award. She is currently working on a biography of jazz musician Billy Tipton, a woman who lived a fifty-year professional and personal life masquerading as a man.



J.C. Casey, Chickasha, looks over a rewrite during the writing institute.

Poetry

This workshop made possible by the Thatcher Hoffman Smith Family Poetry Fund

Making any poem involves sensual acts of translation. We try to make sense of what's beyond our grasp, to face up to the mysteries that keep us curious, and to confront the pain that could crush the spirit. We have to translate a swirl of sensations, feelings, thoughts, details, objects, gestures, and phrases into select lines and images, rhythms and word-pictures. We have to make vivid for a reader what we only partially comprehend ourselves. Then, as we sharpen our perceptions and our conceptions, our visions, thoughts, and emotions, the poem begins to assert its own being. If we're very lucky, we tap into shared memory, the communal or tribal or ancestral consciousness within and around us. Ours will be a generation workshop - we will start new pieces both in and out of class. We will give ourselves permission to write impossible poems, the ones we're pretty sure we're not yet capable of writing. We will work together as a community of writers, respectful and joyous, knowing that we are speaking with those who have come before and those who will come after us.



Peggy Shumaker

Peggy Shumaker has published four collections of poems. Her work has been published in Russia, Japan, Australia, Canada, England and throughout the USA. She has given lectures and readings all over the country, and has done community work with prison inmates, deaf adults, gang members, the elderly, tribal communities, single mothers, gifted students, teachers, librarians and local literary arts groups. In 1992-93 she was president of the

board of Associated Writing Programs. She is a mentor in the initiative to help establish creative writing programs in historically black colleges and universities. Peggy Shumaker earned her BA and MFA from the University of Arizona. She teaches literature and writing in the MFA program at the University of Alaska Fairbanks.

Writing for Children

This workshop made possible by the Jane Ann Young Writing for Children Fund

This workshop is designed for aspiring writers, librarians, and teachers. There will be emphasis on the joy of creating books of interest and imagination. We will examine the elements that make up a good story: plot, dialogue, description. We will discuss the components that help a writer write: discipline, eye, ear, memory. Writers or their "designated readers" will be encouraged to read aloud in class excerpts from their stories, so that we may experience the delightful relationship between the spoken word and the written word.



Joyce Carol Thomas

Joyce Carol Thomas received a National Book Award for her first novel, *Marked by Fire*, published by Avon in 1982. She has since written novels for young adults, as well as plays and poetry for adults. Ms. Thomas was born in Ponca City, Oklahoma, which is the setting of three of her novels. She received a Bachelor of Arts Degree from California State University, San Jose, and a Master of Arts degree in education from Stanford University. She has taught in middle schools, high schools and universities, and has held positions as a visiting associate professor of English at Purdue University and as a visiting associate professor of creative writing at the University of California in Santa Cruz. Joyce Carol Thomas is currently a professor of English at the University of Tennessee and lives outside of Knoxville.

Firesticks:

A Course in Writing

For the Native Americans, story telling is everything. You are what you say, not what you eat. Your words form the trail on which you walk. The voice is spiritual. It brings the word alive. During this fiction / short story workshop, there will be talks and discussions of the old standards of storytelling: conflict / crisis / resolution, character development and change, and the epiphany. There'll be writing exercises, critique sessions, readings, and a sharing of experiences through words. We'll also use native myths and texts from which to write our own stories and hear with the ear of imagination the voices of the landscape. We will also look at Native American methods of storytelling and examine the faulty little medicine bag of the human heart.

"I see our words are Firesticks finding a way through the dark. Strange warriors. In dreams I hear your talk." from Firesticks

Diane Glancy

Diane Glancy teaches Native American Literature and Creative Writing at MacAlester College in St. Paul, Minnesota. Her third collection of short stories, *Monkey Secret*, is just out from the TriQuarterly and Northwestern University Press. Her first collection of stories, *Trigger Dance*, was published in 1990 by the University of Colorado and Fiction Collective Two, and won the Charles Nillon Fiction Award. Her second collection of stories, *Firesticks*, was published in 1993 by the University of Oklahoma Press, American Indian Literature and Critical Study Series. Glancy won the 1990 Native American Prose Award from the University of Nebraska Press as well as the 1993 American Book Award from the Before Columbus Foundation for *Claiming Breath*, a collection of essays. Her first novel, *Pushing the Bear*, is forthcoming in 1996.



REGISTRATION FORM

1995 OKLAHOMA FALL ARTS INSTITUTES

Feel free to photocopy this form as necessary. Return (with \$125 deposit) to
The Oklahoma Arts Institute, 720 N.W. 50th, P.O. Box 18154, Oklahoma City, OK 73154
 Phone: (405) 842-0890 Fax: (405) 848-4538

I. Personal History

Name First _____ Last _____
 First Name (for name tag) _____
 Address Mailing _____ County _____
 City _____ State _____ Zip _____
 Telephone Home (____) _____-____ Work Number _____
 Emergency (____) _____-____ Contact Name: _____
 Professional Profession _____ Employer _____
 Age in Years _____ this information used to help make rooming assignments Sex Male Female
 Ethnicity American Indian Alaskan Native Black/African American Hispanic/Mexican American/Latin American/Puerto Rican
 Asian White (not of Hispanic Origin) Other _____
This information is voluntary in accordance with the 1968 Civil Rights Act as amended.

II. Workshop Registration

Indicate your workshop preference and level of expertise. Because classes fill quickly, it is recommended that you select second and third choices. Prioritize your choices by writing "1," "2" or "3" in the first column next to the classes you are most interested in taking. In the second column, indicate your level of expertise for that class: "B" beginner, "I" intermediate, or "A" advanced. Some classes are restricted to intermediate or advanced participants.

Choral Music & Theatre Institutes September 28 - October 1	Choice 1,2,3	Level B, I, A	Photography Institute October 5-8	Choice 1,2,3	Level B, I, A
Choral Music - Dr. Rodney Eichenberg			The Alternative & Extended Print - Christopher James		
Acting - Douglas Campbell			Portraiture and Beyond - Judy Dater		
Directing - James Nicola			The Personal Landscape - Sally Gail		
Experiencing Shakespeare - P. O'Brien & M. Tolyado			Pinhole Photography - Craig Barber		
Visual Arts Institute October 12 - 15	Choice 1,2,3	Level B, I, A	Writing Institute October 26 - 29	Choice 1,2,3	Level B, I, A
Drawing - Alfred Leslie			Biography & Autobiography - Diane Middlebrook		
Painting - James McGarrell			Poetry - Peggy Shumaker		
Color Woodcut Printmaking - Karen Kunc			Writing for Children - Joyce Carol Thomas		
Illustrating Books for Children - DeLoss McGraw			Fiction - Diane Glasney		
Sculpture: Working with Granite - Jesus Morales			The Art of Teaching Poetry - Robin Behn		

Will you be applying for graduate credit? Yes No
 Have you ever attended the OFAI before? Yes No
 How did you hear about the program? Newspaper Radio TV Friend Brochure Other _____

III. Accommodations - All accommodations are double occupancy

If available, which type of housing accommodation do you prefer? Lodge double room (with roommate) Cabin with kitchenette (2-4 cabinmates)
 If possible, may I room with Name _____
 Do you require vegetarian meals? Yes No Do you smoke? Yes No
 Do you wish to be contacted by other participants about carpooling to / from Quartz Mountain? Yes No

IV. Payment

Enclosed is my payment in full (\$450 tuition, room and board, which includes my \$25 non-refundable registration fee.)
 Enclosed is my \$125 deposit which includes my \$25 non-refundable processing fee (balance due seven days before registration date).
 I am paying by Check Visa Mastercard Expiration date _____ Name as it appears on card _____
 Make all checks or money orders payable to the Oklahoma Arts Institute. Credit card number _____
 I am applying for Faculty Development Funds from my employer. Enclosed is my \$25 non-refundable registration fee.

V. Terms of Registration

I understand that, unless the Institute is otherwise instructed in writing, signing this registration form constitutes a release for any photographs taken of me at the Oklahoma Fall Arts Institutes. I also understand that my written comments may be used for public relations for the program. If I am unable to attend the workshops, I understand that I must notify the Oklahoma Arts Institute 14 working days prior to the first day of class in order to be refunded the total tuition paid, less the \$25 processing fee. I hereby waive any and all claims for myself and my heirs and personal representatives against the Oklahoma Arts Institute, Quartz Mountain Lodge, the State of Oklahoma and any of their agents, servants or employees for injury, illness, or loss of personal property, by theft or otherwise, which may result from my participation in such workshop.

Signature of Registrant: _____

Date: _____

Choral Music

CHARLENE ARCHIBUQUE
Conductor/Los Alam, CA/1994
WESTON NOBLE
Conductor/Beavert, WA/1992
DENNIS SIBBICK
Scholes/Texas, OK/1992

Photography

WILLIAM ALBERT ALLARD
Beavert, WA/1986
MORLEY BAKER
Carnel, CA/1987
RUTH BERNHARD
San Francisco, CA/1988
KIVIN BURBESKI
Beavert, WA/1990
MARSHA BURNS
Seattle, WA/1987
PAUL CAROZZO
Mater/1985, 1986
KEITH CARTER
Beavert, WA/1992
MARTHA CASANAVE
Mansory, CA/1991
WILLIAM CLIFT
Santa Fe, NM/1989
A.O. CUSHMAN
Santa Isabel, NY/1992
MARIE CORDAS
Barnes, MA/1986
NORCIS DEWOLFE III
Aptos, CA/1993
DICK DURRANCE
Rockport, MD/1984
DAVID FITZGERALD
Oklahoma City, OK/1983
RALPH GIBSON
New York, NY/1984
PHILIP FITZ
Tyroneville, CA/1984
MICHAEL KENNA
San Francisco, CA/1990
DOUGLAS KIBELAND
Los Angeles, CA/1993, 1994
MARK KLITT
Tempe, AZ/1992
ROBERT GLENN KETCHUM
Los Angeles, CA/1988
NICK KRACHI
Barnes, MA/1991
KAREN LEONARD
New York, NY/1989
DAVID LUBBERS
Grand Rapids, MI/1984
SALLY MANN
Lebanon, VA/1989
MARY ELLEN MARK
New York, NY/1993
TIM MELLA
Carnel, CA/1987
ARNDT NEWMAN
New York, NY/1984
TED ORLAND
Santa Cruz, CA/1985, 1994
OLYVIA PARKER
Manchester, MA/1991
STEPHEN PHELPS
Scholes/Petaluma, PA/1992
BERNARD PLOUSS
Newport/1983
NEIL SELIKIK
New York, NY/1988
JOHN SEXTON
Carnel Valley, CA/1992
L'ON STEEN
New York, NY/1991
GEORGE TICE
Indio, NY/1990
JERRY UELSMANN
Gainesville, FL/1989
COLE WEXTON
Carnel, CA/1991
BENJAMIN WITHELL
Mansory, CA/1990
DON WORTH
Mer Valley, CA/1985

Theater

EDNAE AKALATIS
Denton/New York, NY/1990
JANE ALEXANDER
Aston/Carnel, NY/1984
LOU ANTONIO
Director/Butte, CA/1989
JOHN LEE BEATTY
Stage Designer/New York, NY/1990
ROBERT BENNETT
Director/Petaluma, CA/1985
JOHN BISHOP
Playwright & Director/Butte, NY/1990
JONATHAN BOLT
Playwright/New York, NY/1994
MARGARET BOKER
Director/Sarasota, FL/1992
CATHERINE BURNS
Aptos/New York, NY/1989
KATHLEEN CABLE
Play & Screenwriter/Cambridge, MA/1988

PREVIOUS FACULTY

OKLAHOMA ARTS INSTITUTE

LONNY CHAPMAN
Actor/Los Angeles, CA/1990
JACK CLAY
Director/Santa Fe, WA/1988, 1992
IRENE CONNORS
Voice & Movement Specialist/Venice, CA/1984, 1985
MORLON DA COSTA
Director/1987
RICHARD DRESSER
Playwright/New York, NY/1990
LYLE DYE
Director/Alam, OH/1983
MICHAEL FEINWOLD
Scholes/New York, NY/1981
MAREE IRVING FORNISI
Playwright/New York, NY/1991
EARLE GERTS
Actress & Teacher/New Haven, CT/1993
BERT HIGLEY
Musician/Petaluma, CA/1983
WOODIE KING, JR.
Director/New York, NY/1992
WERNER KLUMPIERER
Actor/New York, NY/1986
WILLIAM LEVY
Director/Tallahassee, FL/1983
ALLAN MELLER
Actor and Director/Los Angeles, CA/1990
DENISE NICHOLS
Actress/Los Angeles, CA/1994
PEGGY O'BRIEN
Scholes/New York, NY/1991, 1992

ALAN COBER
Theater/Outing, NY/1983
DON DUFFY
Painter/New York, NY/1987
MELVIN EDWARDS
Sculptor/New York, NY/1990
RICHARD FRENCH
Printmaker/Somerset, NJ/1993
JANET FEH
Painter/New York, NY/1993
PETER FRANK
Critic/Los Angeles, CA/1990
NATHAN GOLDBEIN
Painter & Author/Sarasota, MA/1987, 1988, 1994
JUAN GONZALEZ
Painter/New York, NY/1983, 1984
PATRICIA GONZALEZ
Painter/Houston, TX/1992
ROBERT GOODY
Painter & Printmaker/New Orleans, LA/1985
HAROLD GROSS
Painter/Birmingham, AL/1984
GERHART HENY
Critic/New York, NY/1989
RICHARD HEINT
Sculptor/Chicago, IL/1984
DAN KLACZ
Painter/Sarasota, OK/1983
SUZANNE KLOTZ
Sculptor/Sarasota, AZ/1989
NORMAN LALIBRETT
Sculptor/New Mexico, MA/1988

Writing

LINSEY ABRAMS
Fiction/New York, NY/1987
MARVIN BELL
Poet/Long City, LA/1985, 1986, 1993
GERGIE BEGRIE
Poet/Santa Cruz, CA/1991
BRUCE BECKES
Fiction/Spring Spring, MD/1992
GLA BROMBERG
Poet/Provincetown, MA/1990, 1994
RON CARLSON
Short Fiction/Chicago, AZ/1991
RONALD CHERST
Non-Fiction/New York, NY/1992
LUCILLE CLIFTON
Poet & Children's/Santa Cruz, CA/1987, 1990
ROBERT CHELLET
Poet/Butte, NY/1989
CESCENT DRAGONWANG
Children's/Santa Cruz, AZ/1993
LARS ENGE
Scholes/Tuba, OK/1992
TESS GALLAGHER
Poet/Princeton, NY/1984
GEORGE GARRETT
Fiction/Chapel Hill, VA/1990
REGINALD GIBBONS
Poet, Fiction, Essays, etc./New York, NY/1994
LEE GUTKIND
Creative non-fiction/Petaluma, PA/1994
GALE E. HALEY
Children's, Essays/Sarasota, NC/1994
DONALD HALL
Poet/Chapel Hill, NC/1988
STEVE HARRISON
Journalist/Butte, TX/1987
STEVE HELLER
Fiction/Montreal, KS/1992
SUSLEY HEARON
Fiction/White Plains, NY/1988
AMY HEMPEL
Short Story/New York, NY/1989
DAVID HERZBY
Essays & Critic's, Works, TX/1983
EDWARD HERSCH
Poet/Houston, TX/1987
LINDA IRGAN
Poet/Indio, CA/1989
JACQUELINE JACKSON
Children's/Alpharetta, IL/1991
CHARLES JOHNSON
Fiction/Santa Fe, AZ/1986
WILLIAM KETTERIDGE
Fiction/Missouri, MI/1988
JOHN LANS
Poet & Essayist/Syracuse, NY/1986
GERALDINE LITTLE
Poet & Short Fiction/Alam, MO, NY/1992
PHILIP LOPATE
Essays/New York, NY/1989
ED LUBBERS
Non-Fiction/Salt Lake City, UT/1990
HEATHER MCELROY
Poet/Santa Fe, WA/1992
LARRY MORGAN
Fiction/Washington, DC/1984
KAT MURPHY
Journalism/Beavert, WA/1986
JOHN MURRAY
Environmental/Petaluma, AZ/1989
TOBY OLSON
Poet and Fiction/Petaluma, PA/1990
ALICKA OSTERKE
Poet/Sarasota, MA/1992
JAMES RAGAN
Poet & Screenwriter/Berkeley Hills, CA/1985



Photographer Arnold Newman



Actress Jane Alexander & Director Ed Sherin



Poet Donald Hall



Painter Janet Fink

WILLIAM FAULKNER
Director/Monrovia, MD/1991
STEELE JAZEN
Playwright/New York, NY/1986
AMY SALLZ
Director/New York, NY/1994
ED SHERIN
Director/Carnel, NY/1984
RICHARD THOMAS
Actor/Los Angeles, CA/1988
IBENET THOMPSON
Playwright/Butte, Del Rio, CA/1985
MICHAEL TOLATDO
Actor/Washington, DC/1991, 1992
SAM WOODBROOK
Director/Enigma, CA/1990
AL YEUNG
Screenwriter/Palo Alto, CA/1989

Visual Arts

TIMOTHY BARRETT
Papermaker/Kalamazoo, MI/1984
TOM BERRY
Painter & Printmaker/Sarasota, NM/1989
CAROLYN BRADY
Painter/Sarasota, MO/1989
CHRISTOPHER BROWN
Painter/Butte, CA/1990
BOWARD BUCKSWALD
Painter/New York, NY/1989
JAMES BUTLER
Painter/Birmingham, AL/1986
WARRINGTON COLLETT
Printmaker/Alam, MO, NY/1991, 1992
KATHRYN CLARK
Papermaker/Sarasota, NM/1985

MARGAUX
Mixed Media/Chicago, IL/1993
MARIT MATI
Sculptor/Sarasota, TX/1991
MELISSA MILLER
Painter/Sarasota, TX/1991
FRANCES MYERS
Printmaker/Alam, MO, NY/1992
DANIEL NAEZ
Sculptor/Birmingham, AL/1994
DON NICE
Painter/Sarasota, NY/1983
PATRY NOVELL
Sculptor/Butte, NY/1991
PETER PLACIDO
Painter & Critic/New York, NY/1988
HELLY ROBERTS
Mixed Media/Carnel, NM/1994
CLARE ROMANO
Printmaker/New York, NY/1994
JOHN ROSS
Printmaker/New York, NY/1994
BEN SCOTTS
Mixed Media/Santa Fe, NM/1991, 1992
PAUL SOLINGER
Commission/Carnel, CA/1987
TOM VAN SANT
Artist & Designer/Alam, CA/1986
JEANETTE PASTIN SLOAN
Printmaker/Sarasota, FL/1990

OKLAHOMA ARTS INSTITUTE

BOARD OFFICERS

Chairman
Joe Crosby
Vice President
Mid-Continent Region
OXY USA, Inc.
Oklahoma City

Secretary
Harry L. Seay
Attorney at Law
Tulsa

Treasurer
R. Duane Carter
Senior Managing Partner
Grant Thornton
Oklahoma City

Vice-Chair Fundraising
Lou Kerr
Vice President
The Kerr Foundation
Oklahoma City

Vice-Chair Human Relations
Waldo Zarger
Vice President
Operations
Public Service Company of Oklahoma
Tulsa

Vice-Chair Nominations
Mead Ferguson
Rancher
Woodward

Vice-Chair Programs
Dr. David G. Woods
Dean, School of Fine Arts
University of Oklahoma
Norman

Vice-Chair Public Affairs
Ken Ferguson
Chairman
National Bank of Commerce
Altus

PROFESSIONAL STAFF

Mary Y. Frates
President
Mary Gordon Taft
Vice-President, Director of Programs

Laura Anderson
Development Director
Linda DeBerry
Assistant Program Director

Pat Crumpley
Music Coordinator
Public Relations Director

Katy Mullin
Development Assistant

Lynn Sullivan
Office Manager

Jon Burris
Photography Coordinator

Pat Flinn
Finance Officer

Melissa Cryer
Programs Assistant

CATALOGUE CREDITS

Editor
Linda DeBerry

Graphic Design
Design One Associates

Photography
G. Jill Evans

BOARD OF DIRECTORS

Ada
Sally J. Bennett
David Ramsey

Altus
Nelson Doughty*
Kendric Ferguson
Donna Hinton
Paulette Krueger
Helton LaGree*
Tom Yates

Anadarko
Joe McBride, Jr.

Annandale, VA
Al Zapanta*

Ardmore
Sam Daube
Glenn Gee
Jerome Westheimer

Bartlesville
William Paul

Bristow
Lois McMillan

Carmel, NY
Ed Sherin

Claremore
Carolyn Taylor

Clinton
Nancy Goodwin
Kay Smith
Emily Stratton

Coalgate
O.L. "Pete" Burney

Columbus, GA
Robert C. Moore*

Duncan
Marilyn Hugon

Edmond
Margaret Brisch

El Reno
David DeLana

Elk City
Ruth Howard*
Larry Wade

Enid
Sarah Yauk
Greg Allen

Frederick
Carol Crawford

Idabel
Kay Norris

Mangum
Jack M. Griens

Muskogee
Lucy Rooney*
Barbara Simmons

New York, NY
Max Weitzenhoffer

Okmulgee
Lurline R. Mabrey

Lawton
Mary Grace Ashlock*

Jack Bryan
Dorothy Carter*

Auna Gibson
Jane Godlove
Joseph J. Young

Purcell
John Montgomery, Jr.

Pauls Valley
John Burns
William Humphrey

Norman
Tod Barrett
Mosly Shi Borna
Nat Eck, Ph.D.*
Don Holladay
Mary Margaret Holt
Greg Kunesch
Dee J. LaFon*
Esquivel Mera
Mark Osborn
Allan Ross
Miguel Terekhov*
David G. Woods

Oklahoma City
Ann Simmons Alspaugh

Rex M. Ball
Gail Beals
Bob Burke
Duane Carter
James W. Clark
Robert M. Cochran
Joe Crosby
Jerry Dalrymple
Ted d'Andricole*
Mavis Doering
Jeanette Elliot
Louanne Hubey Ellis*

Riley Pitsburgh
Joan Frates

Robert Henry
Sarah Hogan*

Ann Hoover
Lou Kerr

Nick Kyle
Claudine Long
Tom McDaniel

William L. McNat*
Charles Nelson

Russell Perry
Paula Rawls
Mike Rogers
John M. Seward
Jeanne Hoffman Smith*

Helen Sullivan
William W. Talley II
Rex Urice
Kathy Walker

Ponca City
Warren Jensen*
Jo Ann Macimore
Dennis Parker
E.G. "Gene" Thomas*

Sapulpa
Barbara Berry
Jo Anne Bottomley

Seminole
Jasmine Moran

Shawnee
Nance Diamond

Sillwater
Jeas Berry

Tablequah
Col. (Ret.) Martin Hagerstrand*

Woodward
Sheryl Benbrook
Helen Chiu, M.D.
Mead Ferguson

Tulsa
Robin Flint Ballenger

Brad Doenges
Linda Frazier

Vaughnlean D. Fuller
Ann Graves

David R. Guthery*
Hazel Kathryn Hall

Moseclyne Larkin*
Rita Levin

Rick Neal
Francine Ringold

Mauricio Salazar
Charlotte Schuman

Robert Schwartz
Harry L. Seay III
Philip Viles
Katie Wesby
Waldo Zarger

* *Emeritus Board Members*

APPLAUSE! APPLAUSE!

OKLAHOMA ARTS INSTITUTE DONORS

MOUNTAIN MOVERS of the ENDOWMENT CAMPAIGN

The Institute's endowment was established in 1985 with the award of a prestigious Challenge Grant from the National Endowment for the Arts.

To establish a named or designated fund, a gift must be \$10,000 or more.

A \$3 million scholarship campaign to permanently underwrite scholarships in the amount of \$15,000 each for 200 students in the summer program is currently underway.

The Oklahoma Arts Institute gratefully acknowledges the following "Mountain Movers" who are securing the future of the programs of the Oklahoma Arts Institute.

OKLAHOMA SUMMER ARTS INSTITUTE PROGRAM FUNDS

Conoco Ballet Fund
Conoco Inc., Ponca City

Grayce B. Kerr Guest Artists Fund
Grayce B. Kerr Fund, Oklahoma City

Kerr Foundation Modern Dance Fund
Kerr Foundation, Oklahoma City

National Endowment for the Arts Program Fund
National Endowment for the Arts, Washington, D.C.

Neustadt Charitable Foundation Writing Fund
Neustadt Charitable Foundation, Ardmore

Samuel Roberts Noble Foundation Orchestra Fund
Samuel Roberts Noble Foundation, Ardmore

Sarkeys Foundation Guest Artists Fund
Sarkeys Foundation, Norman

Sarkeys Foundation Theatre Fund
Sarkeys Foundation, Norman

Southwestern Bell Foundation Choral Music Fund
Southwestern Bell Foundation, St. Louis, MO

Ellen Woods Westheimer Visual Arts Fund
Mr. and Mrs. Jerome Westheimer, Ardmore

SCHOLARSHIP FUNDS OF THE OKLAHOMA SUMMER ARTS INSTITUTE

Ann Simmons Alsopough Scholarship Fund

Ann Simmons Alsopough, Oklahoma City

BankIV Scholars Fund

BankIV Corporation, Wichita, KS

Bank of Oklahoma Scholarship Fund

Bank of Oklahoma, Tulsa/Oklahoma

Carrie C. Boren Scholarship Fund

U.S. Senator and Mrs. David L. Boren, Seminole

Brattain Scholars Fund

Donald R. Brattain, Minneapolis, MN

Caltex Scholars Fund

Caltex Petroleum Corporation, Las Colinas, TX

Carlock Scholars Fund

John Hoyle Carlock, Jr. Family Trust, Ardmore

Ted d'Ambrise Scholarship Fund

Southwestern Bell Employees and Friends

George and Betty Kaiser Scholarship Fund

George B. and Betty E. Kaiser Foundation, Tulsa

Kerr-McGee Scholars Fund

Kerr-McGee Corporation, Oklahoma City

Koch Scholars Fund

Koch Industries Inc., Wichita, KS, Tulsa

Krasne Scholars Fund

Hyman and Esther Kraane Foundation, Kansas City, MO

Helon Whiteside LaGree Scholarship Fund

Family and Friends of Helon LaGree

Landon-Godford Center Scholarship Fund

Mr. and Mrs. Laurence Landon, Norman

McCasland Scholars Fund

McCasland Foundation, Duncan

Macklanburg-Hulseby Family Scholars Fund

Nona Jean Macklanburg Rumsay, Oklahoma City

David and Jeanne Guebery, Tulsa

Loanne Ellis, Oklahoma City

Karen and Mike Sams, Oklahoma City

Linda and Mike Brewer, Glen Ellen, CA

Richard W. Moore Memorial Scholarship Fund

Family and Friends of Richard W. Moore, Altus

Jasmine Moran Scholarship Fund

Melvin Moran, Seminole

Ruth Kaiser Nelson Scholarship Fund

Ruth Kaiser Nelson Family Foundation, Tulsa

Oklahoma Natural Gas Scholars Fund

Oklahoma Natural Gas Co., Tulsa/Oklahoma City

Shifra Silberman Scholarship Fund

Arthur Silberman Family and Friends

Simmans Scholars Fund

L.B. Simmons Energy Inc., Houston, TX

Southwestern Bell Scholars Fund

Southwestern Bell Foundation, Oklahoma City, St. Louis, MO

Carol Daube Sattton Scholarship Fund

Carol Daube Sattton, Ardmore

Williams Companies Scholars Fund

Williams Companies Foundation Inc., Tulsa

Marcella Craver Young Scholarship Fund

Kent F. Frates, Oklahoma City

Mary Y. Frates, Oklahoma City

John J. Young, Ponca City

Dr. Joseph J. Young, Lawton

Zarrow Scholars Fund

Anne and Henry Zarrow Foundation, Tulsa

Memorial Scholarship Fund

Family and Friends of Elizabeth Burns Family

Family and Friends of Marjory Cornelius

Friends of Dr. E. Ceccon Ferguson Family

Friends of Caroline Elygott Frame Family

Friends of C.L. Frates Family

Friends of Emil Gieser Family

Friends of Virginia C. Johnston Family

Friends of Arthur Silberman Family

Friends of Mary Frances Smith Family

Friends of Judith Somogi

Duggone Memorial Fund

Faculty Memorial Fund

LIBRARY FUNDS

Beverly Badger Memorial Library Fund
Friends of the Badger Library, Altus

OKLAHOMA FALL ARTS INSTITUTES FUNDS

Thatcher-Hoffman-Smith Family Poetry Fund
Jeanne Hoffman Smith, Oklahoma City

Jane Ann Young Writing for Children Fund

Kent F. Frates, Oklahoma City

Mary Y. Frates, Oklahoma City

John J. Young, Ponca City

Dr. Joseph J. Young, Lawton

Friends of Jane Ann Young

ADDITIONAL FUNDS BENEFITTING THE OKLAHOMA ARTS INSTITUTE

Oklahoma Arts Institute Fund at the Oklahoma City Community Foundation, Inc.

A.H.B. Fund

Mrs. Anne Barker

Mr. and Mrs. Robert M. Hoover

Mr. and Mrs. William Kerr

Joan Kirkpatrick

John E. and Eleanor B. Kirkpatrick

Kirkpatrick Foundation

Kirkpatrick Family Fund

Jeanne Hoffman Smith Film Institute Fund

Jeanne Hoffman Smith, Oklahoma City

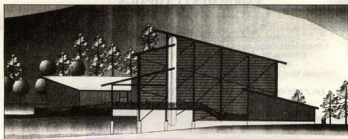
PLANNED GIFT DONORS

Molly Shi Boren, Norman

Gwen Taft, Ardmore

APPLAUSE! APPLAUSE!

OKLAHOMA ARTS INSTITUTE DONORS



Cornerstones of the Capital Campaign A Model Public / Private Partnership

The Oklahoma Arts Institute has entered into an *Agreement* with the State of Oklahoma to develop Quartz Mountain as a regional arts and conference center with a national reputation. The *Quartz Mountain Master Plan* and the *Quartz Mountain Marketing Plan* are the planning documents which are guiding this public / private partnership. The Quartz Mountain Advisory Committee meets quarterly to direct the project and recommend action to the Board of the Oklahoma Arts Institute and the Tourism Commission.

Phase I

A new Arts Complex was dedicated in 1988. Consisting of five studio pavilions, an outdoor amphitheater and a library in the lodge, Phase I cost approximately \$1.4 million. The project was completed with monies raised from the private sector which matched appropriations from the Legislature.

Cornerstone donors in the private sector for Phase I of the Quartz Mountain Master Plan are:

Great Plains Amphitheater

Southwestern Bell Foundation, Oklahoma City

Lone Wolf Pavilion

The McCasland Foundation, Duncan

Buffalo Pavilion

The Kerr Foundation, Oklahoma City

Prairie Falcon Pavilion

Sarkeys Foundation, Norman

Diamondback Pavilion

The Macklanburg-Hulsey Family, Oklahoma City

Wildcat Pavilion

Conoco Inc., Ponca City

Beverly Badger Memorial Library

John S. Badger, Altus

Richard W. Moore, Altus

Public Service Company of Oklahoma, Tulsa

Lanie and Scott Swihart, Altus

The State of Oklahoma provided matching funding for Phase I.

Phase II

In 1993 the people of the state of Oklahoma approved a bond issue which included \$4 million in funding for a conference center / performing hall at Quartz Mountain. The proposed conference center has been designed to meet the needs of large conference groups.

The Quartz Mountain Hall will seat 750 and is appropriate for orchestral music as well as other performances, lectures, films, and other events.

Also included in the complex are the Twin Peaks Recital Hall which will seat 125, as well as two workshop studios and public rest rooms.

In February 1995 a fire destroyed the lodge at Quartz Mountain.

Fortunately there was insurance totalling \$4 million and the legislature appropriated another \$3.5 million for rebuilding.

A \$7.5 million facility is planned which will house the new Badger Library, gallery space, an exhibition center of Native American art, ballroom, dining room, in addition to housing totalling 100 rooms. Both the Quartz Mountain Hall and the new lodge are scheduled for completion by the summer of 1997.

Phase III

The Oklahoma Arts Institute hopes to interest a private donor in completing the Quartz Mountain Master Plan. The Institute is currently undertaking a capital campaign to raise \$4.5 million to implement Phase III, which will include the construction of student housing, a sports center and nature trails.

APPLAUSE! APPLAUSE!

OKLAHOMA ARTS INSTITUTE DONORS

Quartz Crystal Club of the General Operating Fund \$1,000+

In every organization there is a group of committed donors who loyally contribute large gifts each year for the purpose of underwriting annual operations. For the Institute, the Quartz Crystal Club, donors of \$1,000 and more, is this group. The Oklahoma Arts Institute gratefully acknowledges the generous support of its Quartz Crystal Club members who have contributed to the Institute's annual operating fund between June 1, 1994 and May 15, 1995:

Underwriters \$10,000+

Conoco Inc., Ponca City
DeWitt Wallace Reader's Digest
Special Projects Fund, New York
Flomig Companies, Oklahoma City
Fred Jones Foundation, Oklahoma City
Grant Thornton, Oklahoma City
Holley Lobby Stores, Inc., Oklahoma City
Karr Foundation, Oklahoma City
The Samuel Roberts Noble Foundation, Ardmore
Oklahoma State Department of Education, Oklahoma City
Oklahoma State Regents for Higher Ed., Oklahoma City
Oklahoma Tourism & Recreation Department, Oklahoma City
Phillips Petroleum Foundation, Inc., Bartlesville
State Arts Council of Oklahoma, Oklahoma City
Tetaco Foundation, Tulsa
Lamin and Scott Swarth, Tulsa
Arlene Westheimer Family Foundation, Ardmore

Benefactors \$5,000-\$9,999

Bank IV Charitable Trust, Wichita, KS
Mrs. Olive H. Daube, Ardmore
Greco Frame and Supply, Oklahoma City
Harris Foundation, Inc., Oklahoma City
Mr. Chris Kenner, Oklahoma City
Kirkpatrick Family Fund, Oklahoma City
Kirkpatrick Foundation, Oklahoma City
McMahon Foundation, Lawton
Charles Marvin Sizer Foundation, Tulsa
Tulsa World, Tulsa
The Williams Companies Foundation, Inc., Tulsa
Wilmes GM Superstore, Tulsa

Patrons \$2,500-\$4,999

Ann Simmons Alspough, Oklahoma City
Auntie Public School Foundation, Ada/Lark
Arthur and Susette Burns Fund, Pauls Valley
BancFirst Charitable Foundation, Oklahoma City
Donald Brattain, Minneapolis
Edmond Women's Club, Edmond
Great Plains Coca Cola Bottling Company, Oklahoma City
Koch Industries, Tulsa
Pricilla McElidowney, Seattle, WA
Occidental Oil and Gas Charitable Foundation, Tulsa
Oklahoma Community Theatre Association, Oklahoma City
Oklahoma Gas & Electric Company Foundation, Oklahoma City
Leslie Powell Foundation, Lawton
Public Service Company of Oklahoma, Tulsa
R. L. and Jeannette Sun, Edmond
Sonic Drive-Ins of Oklahoma

Sustainers \$1,000-\$2,499

American Airlines, Oklahoma City
Mary Grace Ashlock, Lawton
Mr. Thomas Ayres, Norman
REX M. BALL, P.A./A, AICP, Oklahoma City
Robert F. Balthasar, Tulsa
Bruce and Sheryl Benbrook, Woodward
Mr. and Mrs. Bob E. Bennett, Ada
Mr. and Mrs. Steven R. Berlin, Tulsa
Mrs. C. L. Berry, Lawton
Jean C. Berry, Stillwater
Bill Crawford Memorial Scholars Fund, Duncan
Mr. and Mrs. OT Blankenship, Oklahoma City
President and Mrs. David L. Brown, Norman
Mrs. JoAnne Bertoneley, Sapulpa
Hans and Margaret Beach, Edmond
Brenda Brown, Newcastle, Tulsa, Oklahoma City
Jack and Judy Bryan, Lawton
Paul Capostagno, Rockport, ME
Mrs. Jack Caruth, Lawton
The Robert G. and Norma Jean
Chadderton Foundation, Broken
Chickasaw Nation, Ada
Drs. Fong and Helen Chou, Woodward
Mr. and Mrs. Sue H. Crosby, Oklahoma City
Cuerta Foundation, Inc., Tulsa
Mrs. Paul Cullen, Lawton
The Daily Oklahoman, Oklahoma City
Judy Delaply, Oklahoma City
Mr. and Mrs. Tol'd Anstrolin, Oklahoma City
David C. DeLass, Ardmore
Sara C. DeLass Family, El Reno
Dolores Brothers Company, Oklahoma City
Katharine M. Duncan, Oklahoma City
Nancy and Tom Dunlap, Ardmore
DydeCorp, Fort Worth, TX, Tulsa
Jeanette Elliott, Oklahoma City
Exchange National Bank and Trust Company, Ardmore
Mr. and Mrs. Ken Ferguson, Tulsa
First National Bank of Tulsa, Tulsa
Charles W. Flint, Jr. Charitable Income Trust, Tulsa
Mr. and Mrs. C. W. Flint, Jr., Tulsa
In honor of Robert Fiat Ballenger
Flint Industries, Inc., Tulsa
Mr. Steiner H. Flynn, Jr., Oklahoma City
Mrs. Clifford L. Frason, Oklahoma City
Mr. Keni Frizes, Oklahoma City
Mr. and Mrs. Rodman Frantz, Oklahoma City
Doris and Judy Garrett, Lawton
Dr. and Mrs. Gilbert C. Gibson, Lawton
Jack and Helen Jane Given, Mangon
Charles P. Goodlett Foundation, Ardmore
Grace Petroleum Foundation, Oklahoma City
Mr. and Mrs. J.M. Graves, Tulsa
Mr. and Mrs. David Guthrie, Tulsa
Dr. and Mrs. J. Richard Hall, Tulsa
Mr. and Mrs. Don Hogan III, Oklahoma City
Mr. and Mrs. Don Holladay, Norman

Sustainers \$1,000-\$2,499

William E. Humphrey, Pauls Valley
The Inasmuch Foundation, Oklahoma City
Warren and Norma Jensen, Ponca City
The Kaiser Foundation, Tulsa
Benjamin Kennedy III, Oklahoma City
The David Kenworthy Karr Memorial, Oklahoma City
Mr. John Kilpatrick, Jr., Oklahoma City
E. P. and Roberta L. Kinschner Foundation, Muskogee
Dr. Joseph and Pauline Kroege, Tulsa
Helen LaGree, Tulsa
Liberty Foundation, Inc., Oklahoma City
Lurline K. Mahrey, Okmulgee
Pete and Roselle MacKellie, Oklahoma City
MacKleinberg-Helley Foundation, Oklahoma City
The Maguire Foundation, Oklahoma City
McAlister Arts Arts & Humanities, McAlester
Tom J. McDaniel, Oklahoma City
Mr. and Mrs. James McNeese, Ponca City
Dr. and Mrs. Mark H. Mellow, Oklahoma City
The James D. and Kay Y. Moran Foundation, Dallas, TX
Jeanine and Melvin Moran, Seminole
National Bank of Commerce, Tulsa
Ruth K. Nelson, Tulsa
Oklahoma City Community Foundation, Oklahoma City
Oklahoma Foundation for the Humanities, Oklahoma City
Ozark Water, Healdton
Dr. David C. Ramsey, Ada
Gerald and Paula Rawls, Oklahoma City
Frank and Luchita Robson, Claremore
Mr. and Mrs. Maurice Salazar, Tulsa
Mr. Fritz Schelder, Scottsdale, AZ
Mrs. Charlotte Wolcott Schuler, Tulsa
Charles M. Schusterman Revocable Trust, Tulsa
Schusterman Family Foundation, Tulsa
Scrivner, Inc., Oklahoma City
Mr. and Mrs. Henry L. Sery, III, Tulsa
Security National Bank and Trust Company of Duncan, Duncan
Mr. and Mrs. John Seward, Oklahoma City
Mr. and Mrs. Joe L. Singer, Oklahoma City
Janice Hoffman Smith, Oklahoma City
Southwestern Bell Foundation, Oklahoma City
David C. Sneed, Ardmore
Dr. and Mrs. William W. Talley II, Oklahoma City
Travelers Motor Club, Oklahoma City
United Supermarkets, Tulsa
Mr. and Mrs. Rex Uice, Oklahoma City
Mr. Philip Viles, Tulsa
Drs. Mark and Melissa Weiss, Tulsa
Mr. Richard Warren, Oklahoma City
Mr. Max Weitzmanhoff, New York
Kathleen P. Westly Foundation, Tulsa
Westminster Presbyterian Church, Oklahoma City
Mr. and Mrs. James Williams, Ardmore
Mr. and Mrs. Joseph H. Williams, Tulsa
WorldWood Industries, Inc., Oklahoma City
Dr. and Mrs. Joseph J. Young, Lawton

APPLAUSE! APPLAUSE!

OKLAHOMA ARTS INSTITUTE DONORS

Voting Members of the Oklahoma Arts Institute \$250-\$999

Voting members are our "stakeholders," the equivalent of stockholders in for-profit organizations. Voting members elect board members and participate in reviewing the annual reports of the administration at the Annual Meeting of the organization. The Oklahoma Arts Institute gratefully acknowledges the support and participation of its voting members between January 1, 1993, and December 31, 1993.

Voting Members \$250-\$999

3M Weatherford Plant, Weatherford
Ada Arts & Humanities Council, Ada
Ada Rotary Club, Ada
Alex and Teresa Adams, Tulsa
Aldonian Study Club, Altus
Mr. and Mrs. Greg Allen, Enid
Altus Air Force Base, Altus
Altus Medical Clinic, Altus
Virginia and Larry Anderson, Altus
Bill and Mary Ann Appleby, Altus
Mr. and Mrs. Kenneth E. Azzie, Ardmore
Auto Electric Sales & Service, Ardmore
Mr. and Mrs. Darrell Azzoli, Oklahoma City
Mr. and Mrs. Benjamin N. Bailey, Altus
Mr. Martin Bailey, Altus
Ballets, Oklahoma City
Wanda and Clark Bean, McAlester
Mr. J. Brath, Tulsa
Sharon Bell and Gregory Gray, Tulsa
Bill-Jac Pet Foods
Mr. and Mrs. George W. Blinn, Tulsa
Mr. and Mrs. George W. Blinn, Jr., Tulsa
Mr. Kevin Hubicki, Slidellville, VT
Edward Budzinski, Muskogee
Mr. Bob Buzek, Oklahoma City
Mr. G.L. Burney, Coalgate
William M. Casanova
American Fidelity Group, Oklahoma City
Carrie Clipp, Oklahoma City
Dr. and Mrs. John N. Carter, Lawton
Ms. Martha Casavate, Mustang, CA
Ms. Marel Cearley, Moore
Cellular One, Southwest Oklahoma, Altus
Christie Carter Co., Ponca
Cigo Petroleum Corporation, Tulsa
Citizen's Security Bond and Trust, Bixby
Dr. and Mrs. Jack Clark, Altus
John and Mary Ann Coates, Jr., Oklahoma City
Mrs. Ted Colbert, Oklahoma City
Warrington Coloscoot, Mt. Hope, WI
Terrence and Susan Cooksey, Norman
Mr. Frank Crawford, Ada
Mr. and Mrs. J.B. Crawley, Duncan
Mr. and Mrs. Herschel Crow, Altus
Mr. and Mrs. Timothy DeLoe, Tulsa
DeLong Mailing, Oklahoma City, OK
O.K. Detrick Foundation, Inc., Bartlesville
Nance Diamond, Shawnee
Brad Doergens, Tulsa
Mr. Robert Doergens, Tulsa
Mr. Nelson Doughty, Altus
Duncan Brothers, Oklahoma City
Duncan Arts & Humanities Council, Duncan
Duncan Bassett, Duncan
Ms. Dorothy Elderkis, Oklahoma City
G. Jill Evans, Oklahoma City
Mrs. Sharon Evans, Oklahoma City
Essex Gift Matching Program, Houston, TX

Voting Members \$250-\$999

Mr. and Mrs. Mead Ferguson, Woodward
First State Bank of Ardmore, Ardmore
Mr. and Mrs. Jerry Fischer, Lawton
Dr. and Mrs. Marc Frasier, Tulsa
Miriam Freedman, Muskogee
Dr. and Mrs. A. Munson Fuller, Tulsa
Glenn Gray, Ardmore
Mr. and Mrs. Ernest P. Goolfow, Lawton
Mr. and Mrs. Charles L. Goodwin, Elmore
Mrs. Emma Gray, Robert
Col. and Mrs. Martin Hagedorn, Talihugah
William and Susan Habel, Oklahoma City
Edith Gayford Hager, Oklahoma City
Headly's Photography, Oklahoma City
The Helter Theatre, Tulsa
Matthew G. Helmschick, New York, NY
Mr. and Mrs. J.J. Henry, Lawton
Mr. Keith Henson, Shawnee
John and Susan Herres, Oklahoma City
Mr. and Mrs. Robert Hixon, Altus
Hitachi Copier Products, Norman
Ruth Howard, Elk City
Walter Arts Center, Holland Hill School, Tulsa
Ann Howell/Les Claess, Oklahoma City
Dr. Joe Motta Howell, Oklahoma City
Dr. and Mrs. Robert F. Huston, Virginia
Marilyn Hugen, Duncan
Mr. William Humphrey, Paris Valley
IAMS Pet Foods, Oklahoma City
Jay and Chloee Jansen, Bartlesville
Mr. and Mrs. John K. Jones, Bartlesville
Kerr Center for Sustainable Agriculture, Ponca
KFWTV Channel 9, Oklahoma City
Mr. and Mrs. Paul K. Lackey, Jr., Tulsa
Linda Goldstein and Gordon D. Lantz, Tulsa
Lee Office Supply, Altus
C. Elton Leonard, Muskogee
Lawton Schubert Music Club, Lawton
Dr. and Mrs. Joe Leveon, Altus
Dr. and Mrs. Simon A. Lewis, Tulsa
Jack and Claudine Long, Oklahoma City
Robert and Rotana Lewin, Tulsa
Robert P. Luke, Oklahoma City
Marianne's Rentals, Oklahoma City
Mr. Colby's, Oklahoma City
Mr. Kurt Markus, Kalispell, MT
Mr. Marshall Mayes, Norman
Mr. and Mrs. Joe McHershe, Jr., Anadarko
Mr. and Mrs. Mike McCull, Ardmore
Mrs. John McCusie, Oklahoma City
Mr. Delous McGraw, Scottsdale, AZ
Henry and Lois McMillan, Bristow
Mr. and Mrs. William McNett, Oklahoma City
Pater and Nancy Meitzel, Tulsa
Miller Distributing of Oklahoma, Oklahoma City
Ms. Melissa Miller, Austin, TX
Dr. and Mrs. J. Charles Moore, Oklahoma City
John D. Montgomery, Jr., Pucell

Voting Members \$250-\$999

Dr. and Mrs. Craig B. Moore, Hobart
Mr. Fran Myers, Mt. Hope, WI
Rick Neal, Tulsa
Don and Rita Newman, Tulsa
Nuro Products Dog Foods, Oklahoma City
Officers Wives Club Welfare Fund, Altus
Oklahoma Allergy Clinic, Oklahoma City
Patrons of the Arts Club of Altus, Altus
William O. Paul, Bartlesville
PecMac, Oklahoma City
Playhouse of Ardmore
Public School Foundation, Ardmore
Ponca City Art Association, Ponca City
Ponca City Arts & Humanities Council, Ponca City
Mr. and Mrs. Lee Powell, Oklahoma City
Mr. and Mrs. Bruce P. Price, Bartlesville
Quik Print, Oklahoma City
Red River Federal Credit Union, Altus
Red River Valley Electrical Association, Marietta
Ms. Jeanne Reed, Ponca
Moffitt Richardson, Oklahoma City
Frances Ringold, Ph.D., and
Lucy Johnson, Ph.D., Tulsa
Marilyn T. Rooney, Muskogee
Dr. and Mrs. Tom Russell, Oklahoma City
Sagolpa Arts, Sapulpa
Patricia Pape Savage, Tulsa
Mr. and Mrs. Andre Saxton, Harrah
Ms. Ina Schick, Sallis, N.M.
Mr. and Mrs. Fred Scholten, Ardmore
Boyl, Sue and Jennifer Sheik, Bethany
Shoretown Arts and Humanities Council, Altus
Gale and Lucy Smith, Edmond
Dr. and Mrs. Jerry Neil Smith, Norman
Southwestern Bell
Gift Matching Program, St. Louis, MO
David and Emily Smothers, Clinton
Mrs. Helen Sullivan, Oklahoma City
Mary Gordon Tall, Oklahoma City
Janet M. Talaferno, Oklahoma City
Carilyn Thompson Taylor, Claremore
Mr. George Tice, Indian, NJ
Lind Tripp Catering, Oklahoma City
Sue K. Verneer, Jr., Okemune
Mr. and Mrs. Calvin Vogt, Tulsa
Mr. and Mrs. Larry Wade, Elk City
Mr. and Mrs. Jerald Walker, Edmond
Mr. and Mrs. Russell James Walker
Joel and Beverly Walker, Ardmore
Dr. and Mrs. G. Rainey Williams, Oklahoma City
Mr. and Mrs. Joseph Williams, Tulsa
Laurie Williams, Oklahoma City
Mr. and Mrs. R. Scott Wilson, Oklahoma City
Fannie White, Muskogee
Tom and Ellen Yates, Altus
Mr. and Mrs. Paul Yant, Enid
Waldo Zenger, Jr., Tulsa

APPLAUSE! A THAUSE!

OKLAHOMA FINE ARTS INSTITUTE DONORS

SUPPORTERS

Supporters are the foundation and "bear up" the programs of the Institute. This significant statewide grassroots support is critical to maintaining and upholding the work of the Institute. Every dollar counts! We are proud and grateful for the number of supporting gifts which have been forthcoming throughout the state. We gratefully acknowledge the following supporters:

SUPPORTERS

Sweet Pea and Earl Abernathy, Tulsa
LouAnn Allen and Frank Puk, Oklahoma City
Mrs. Ann Aboussou, Altus
The Ada Area Heritage Center, Ada
Ms. Inna Adams, Altus
Dr. and Mrs. James Agar, Norman
Dr. and Mrs. William Albrecht, Edmond
Ms. Peggy Allen, Lawton
Lt. Col. and Mrs. Ross Allgood, Altus
Allied Arts & Humanities Council of Bartlesville
Alton Finney, Inc., Altus
Almas Laundry and Cleaners, Altus
Almas Neon Signs Club, Altus
Almas Printing Co., Altus
Almas Public Schools, Altus
Almas Radio, Inc., Altus
Mr. and Mrs. Bill Ansell, Edmond
Mrs. Suzanne Ames, Tulsa
Ms. Bethel Anderson, Hobart
Col. and Mrs. Howard Anderson, Altus
Dr. and Mrs. Michael Anderson, Oklahoma City
Ms. Laura Anderson, Oklahoma City
The Apache Tribe of Oklahoma, Ardmore
Ardmore Neon Optician Club, Ardmore
Ardmore Arts Club, Elk City
Arkansas Valley State Bank, Broken Arrow
Arkansas-Louisiana Gas Co., Lawton
Dr. and Mrs. Leslie Aronson, Edmond
The Auto Travel Agency, Altus
Col. and Mrs. GE Aronson, Oklahoma City
Mr. and Mrs. James Arkison, Altus
The Aloka State Bank, Altus
Mr. and Mrs. William Austin, Altus
Mrs. Maxine Austin, Edmond
B&B Brickery, Bristow
Mr. and Mrs. Robert Back, Oklahoma City
Mr. and Mrs. Kenneth Baker, Hobart
Ms. Boyd Baker, Altus
Dr. and Mrs. Noble Ballard, Altus
Mrs. Brad Ballard, Sapulpa
Dr. and Mrs. Hal Barker, Oklahoma City
Mr. and Mrs. Van Barker, Oklahoma City
Mr. and Mrs. Frank Barnes, Sapulpa
Mr. and Mrs. Robert Barnett, Mangum
Mr. and Mrs. Robert Barr, Oklahoma City
Mr. and Mrs. Lloyd Barrett, Norman
Dr. and Mrs. A.J. Bartholmeus, Tulsa
The Bartlesville Rotary Club, Bartlesville
Bartlesville Insurance Agency, Altus
Mr. and Mrs. C.B. Battist, Hobart
Mr. and Mrs. Alan Behrens, El Reno
Col. and Mrs. Walter Bellard, Lawton
Mr. and Mrs. Ronald Bennett, Durant
Ms. Mary Bertley, Oklahoma City
Dr. and Mrs. Robert Berry, Oklahoma City
The Bern Mothers Club, Altus
Ms. and Mrs. Cleo Bilbey, Duke
Ms. and Mrs. Dale Bilbey, Oustee
Mr. and Mrs. Gene Bitting, Oklahoma City
Highway 66McGuinnis High School, Oklahoma City
Ms. Mary Blittman, Ponca City
Melinda Stiles & Geoffrey Blackman, Oklahoma City
Ms. and Mrs. Roger Blades, Bartlesville
Blissnet-Intertex, Altus
Mr. and Mrs. James Blazel, Oklahoma City
Ms. and Mrs. Bydler Bobo, Altus
Dr. and Mrs. Don Bobanack, Altus
Dr. and Mrs. John Boland, Jr., Oklahoma City
Dr. and Mrs. R. Boone, Jr., Watonga
Mr. and Mrs. Charles Bottoms, Owasso
Mrs. Betty Carol Brown, Guthrie
Mr. and Mrs. Charles Brownman, Bartlesville
Mrs. Jack Bowker, Ponca City
Mrs. Jan Bowker, Ardmore
Mr. and Mrs. Tom Bruckner, Altus
Mr. David Braddock, Altus
Mr. and Mrs. Larry Bradley, Ada
Dr. and Mrs. James Brasher, Norman

SUPPORTERS

Ms. Doris Branton, Mangum
Mr. and Mrs. Jerald Branton, Oklahoma City
Dr. and Mrs. George Bridges, Elgin
Mr. and Mrs. Bill Brinkman, Altus
Mr. and Mrs. John Brinkman, Altus
Mr. and Mrs. Wade Brinkman, Altus
Mr. CS Broughan, Oklahoma City
Mr. and Mrs. Ray Biffles, Altus
Steven and Carrie Brown, Chickasha
Mr. and Mrs. Ellis Brown, Jr., Altus
Mrs. Ann Milhobby Berger, Tulsa
Mr. and Mrs. Joe Bruck, Altus
Buck and Catherine Reed Turner, Altus
Banker Hill Dry, Altus
Ms. and Mrs. Steve Burdick, Duncan
David and Barbara Burns, Altus
Mrs. W.H. Burgen, Lawton
Ms. and Mrs. A. Burston, Altus
Mrs. Joan Burns, Norman
Carmen and Mrs. James Burns, Lawton
Mr. and Mrs. Randall Burns, Dawson
Mr. Jack Calmes, Hobart
Cavaliers Club, Edmond
Mrs. C.H. Cameron, Oklahoma City
Clyde Home Furnishings, Altus
Margaret Jo Casler, Mangum
Mr. and Mrs. Phil Caslin, Altus
Mr. and Mrs. Odo Carter, Hollisville
Mr. and Mrs. Calvin Castleman, Hollis
Cable Management Systems, Altus
Mr. and Mrs. Thomas Chamberlain, Bartlesville
Dr. Susan Chambers, Oklahoma City
Dr. and Mrs. Richard Champier, Oklahoma City
Truman Chapman, Hobart
Chapter C.M. of E.O., Altus
Doris Jane Chedak, MSW, Oklahoma City
Chevron USA, Inc., Concord, NH
Mr. and Mrs. Dick Coates, Altus
Mr. Robert Cochran, Oklahoma City
Ms. Evelyn Cochran, Elk City
Mr. and Mrs. Henry Coffeen, Jr., Oklahoma City
Mr. Sid Coffman, Mangum
Mr. and Mrs. Mark Coke, Altus
Dr. and Mrs. William Collins, Oklahoma City
Mr. and Mrs. Jack Cobble, Altus
Mr. and Mrs. Ward Conway, Edmond
Mr. and Mrs. John Curti, Jr., Spencer
Betty Cook, Jacksonville Beach, FL
Mr. and Mrs. David Cordell, Oklahoma City
Mr. and Mrs. Donald Cousart, Oklahoma City
Mr. and Mrs. Frank Coney, Altus
Mr. Howard Coover, Altus
Mr. and Mrs. Joe Coover, Altus
Mr. and Mrs. Edna Cox, Bartlesville
Mr. and Mrs. Larry Coy, Bristow
Mr. and Mrs. Samuel Ornt, Altus
Mr. and Mrs. Roy Cunn, Thibodaux
Mr. and Mrs. William Crawford, Frederick
Mr. and Mrs. Weaver Crook, Altus
Mr. and Mrs. Keith Critch, Ardmore
Mr. and Mrs. Bob Cunn, Oklahoma City
Mr. and Mrs. Cyrus Cunn, Oklahoma City
Ms. Patrick Crumpler, Norman
The Cullins Club, Elk City
Mr. and Mrs. Douglas Cunningham, Oklahoma City
Mr. and Mrs. Joe Howard, Oklahoma City
The Daily Ardmorean, Ardmore
Dr. and Mrs. William Dalton, Oklahoma City
Mr. and Mrs. Howard Darby, Duke
Mr. and Mrs. Richard Darby, Altus
Mr. and Mrs. Bill Davenport, Lawton
Mr. and Mrs. Curtis Davidson, Ardmore
Mr. Charles Davis, Oklahoma City
Ms. Christie Davis, McAlester
Mr. and Mrs. James F. Davis, Oklahoma City
Mr. and Mrs. James David, Edmond
Linda Davis, Jenks

SUPPORTERS

Ms. Marjorie Lee Davis, Lawton
Ms. and Mrs. Bill DeFoe, Stillwater
Ms. Nancy Odette, Piedmont
Mr. and Mrs. JC Denton, Mangum
Mr. and Mrs. Richard Deener, Stillwater
Mr. and Mrs. Phil DeWitt, Tulsa
Dr. and Mrs. John DeWoe, Oklahoma City
Mr. and Mrs. Richard Dickson, Norman
Mr. and Mrs. James Dugg, Oklahoma City
Mr. and Mrs. Johnnie Ditz, Altus
Mr. and Mrs. Bill Dobbie, Altus
Mr. and Mrs. Keith Dodson, Altus
Mr. and Mrs. Mark Doolan, Altus
Mr. and Mrs. Robert Dolan, Jr., Oklahoma City
Mrs. L.M. Dooze, Lawton
Mr. and Mrs. Harold Douglas, Altus
Mr. and Mrs. Lee Douglas, Altus
Mr. and Mrs. David Dwyer, Guthrie
Mr. and Mrs. Bonnie Dyer, Blair
Mr. and Mrs. Larry K. Duffy, Altus
Lt. Col. and Mrs. George Dusek, Jr., Altus
Dr. and Mrs. James Duran, J. McAlester
Mr. R.C. Duncan, Oklahoma City
Duncan Printing Co., Lawton
Mr. and Mrs. Wad Evans TV, Edmond
Mr. and Mrs. John Durr, Norman
Mr. and Mrs. John W. Dunn, Woodward
Mr. and Mrs. Alton Eaker, Altus
Mrs. Berence Baker, Oklahoma City
The Elmdale Public Schools, Edmond
Ms. Melissa Edmonson, Lawton
Mr. and Mrs. Steve Edwards, Sand Springs
Mrs. Patricia Edwards, Oklahoma City
The Elmer Adenians Club, El Reno
Dr. and Mrs. Edwin Ellis, Ardmore
Dr. and Mrs. Robert Ellis, Oklahoma City
Mr. and Mrs. Alfred Ellis, Hobart
Mr. and Mrs. James Ellis, Hennessee, OK
Mr. and Mrs. Joseph Ellis, Oklahoma City
Mr. Will Elton, Jr., Tulsa
Ms. Barbara Elton, Tulsa
Mr. and Mrs. Jeta Felm, Bartlesville
Mr. and Mrs. Paul Finkbeiner, Bartlesville
Mr. and Mrs. Charles Finkbeiner & Engstrom, Clinton
The Erdelbachs Club, Altus
Mr. and Mrs. Troy Eshanks, Broken Arrow
Mr. J. Patrick Evans, Edmond
Mrs. Ruth Evans, Altus
Dr. Mark Everett, Oklahoma City
Mr. and Mrs. Lyle Exstrom, Altus
Mr. Harold Feagin, Tulsa
Ms. Hand Feagin, Oklahoma City
Mrs. Phillip Fern, Norman
Dr. and Mrs. David Fetters, Lawton
Ms. E. Gordon Ferguson, Oklahoma City
Mrs. Judy Ferguson, Oklahoma City
Mrs. Yarnes Ferguson-Herron, Oklahoma City
Mrs. Weldon Ferris, Altus
Ms. Freddie Field, Edmond
First National Bank of Clinton
First State Bank of Altus, Altus
Mr. and Mrs. Howard Fitt, Altus
Mr. and Mrs. John Fitt, Bartlesville
Mr. and Mrs. Donald Fitzgerald, Oklahoma City
Dr. and Mrs. Ronald Floyd, Lawton
Ms. Ginny Fitzgerald, Oklahoma City
Dr. and Mrs. Richard Floyd, Oklahoma City
Patricia B. Flinn, Norman
Betty and Dale Fols, Hobart
Ms. Nancy Fogt, Oklahoma City
Dr. Judith A. Ford, Norman
Don Foster, Hobart
Fortnight Club Music Dept., McAlester
Dr. and Mrs. Morris Foster, Altus
Mr. and Mrs. Pete Fowler, Pryor
Fork and Deschler, Inc., Altus
Mrs. Alan Frank, Oklahoma City
Ms. Florence Frank, Oklahoma City

SUPPORTERS

Mr. and Mrs. John W. Franklin, Oklahoma City
Mrs. Joe Friedrich, Altus
Mr. and Mrs. Forrest Frank, Norman
Mr. and Mrs. David E. Fry, Clinton
Mr. and Mrs. Dennis Fry, Broken Arrow
Mrs. Glenna Christian Gallagher, Oklahoma City
Mrs. Vistia Galloway, Elk City
Gemma Della Kappa Chapter, Weatherford
Dr. and Mrs. Don Garner, Lawton
Mr. and Mrs. Donn Garrett, Altus
Dr. and Mrs. Douglas Garrison, Altus
GBA Architects, Altus
Genn, Etc., Inc., Altus
Mr. and Mrs. Cecil George, Altus
Dr. and Mrs. Gilbert Gibson, Lawton
Dr. and Mrs. Steven Gillford, Altus
Mr. Kevin Gilpatrick, Altus
Dr. and Mrs. John Glasgow, Altus
Mrs. Mary Virginia Glodow, Lawton
Mr. and Mrs. Larry P. Gonzalez, Edmond
Mr. and Mrs. William Goodly, Oklahoma City
Mrs. Loren Sue Goodly, Altus
Mr. and Mrs. John P. Gower, Altus
Mr. and Mrs. Bruce Govich, Norman
Mr. and Mrs. Lee Green, Altus
Mr. and Mrs. Kenneth Green, Altus
Mr. and Mrs. Larry George, Frederick
Mr. and Mrs. William George, Mangum
Mr. and Mrs. Fred Griddle, Altus
Mr. and Mrs. John Griffin, Muskogee
Mr. and Mrs. David Grimes, Altus
Mr. and Mrs. Truett Guthrie, Hobart
Lenna Wilking Haverland, Altus
Mr. and Mrs. William Hake, Oklahoma City
Ms. Katharine Hale, Blair
Mr. and Mrs. Kelly Hall, Altus
Mr. and Mrs. Volney Haman, Lawton
Mr. Bill Hayes, Thonasa
Mr. and Mrs. V. Irma Harris, Oklahoma City
Ms. Edna Herkins, Miami
Mr. and Mrs. Gordon Hergis, Tulsa
Mrs. Guy E. Harrison, McAlester
Mr. and Mrs. Henry Haswell, Altus
Hot Top of Altus
Mr. and Mrs. John Havens, Edmond
Mrs. John Hawthorn, Muskogee
Mr. and Mrs. Bryce Henderson, Altus
Mr. Robert Henry, Oklahoma City
Mr. and Mrs. T.J. Henry, Lawton
Dorothy L. Hensley, Oklahoma City
Mr. and Mrs. John Hennes, Oklahoma City
Mr. and Mrs. Earl Hensley, Altus
Mr. Richard Herberberg, Oklahoma City
Mr. and Mrs. Richard Houston, Lawton
Mr. and Mrs. Richard Houston, Oklahoma City
Ms. Stephen J. Hegan, Miami
Higgs Loan Company, Altus
Mr. and Mrs. EC Highwater, Mangum
Dr. and Mrs. W. Hildinger, Altus
Dr. and Mrs. Alva Hill, Altus
Mr. and Mrs. Richard Hill, Warr Acres
Mr. and Mrs. Larry Hill, Altus
Mr. and Mrs. Paul Hinkle, Hobart
Mr. and Mrs. James Hines, Woodward
Mr. and Mrs. Bice Hitchcock, Bartlesville
Mr. and Mrs. Stamos Hoffmeyer, Ponca City
Mr. and Mrs. Jack Hogg, Altus
Mr. and Mrs. HT Hilden, Kemin
Mrs. Linda Holland, Altus
Mr. and Mrs. Carl Hilliard, Oklahoma City
Dr. and Mrs. Jan Holman, Altus
Dr. and Mrs. Willard Holt, Altus
Mr. and Mrs. Steve Hobbs, Poteau
Mrs. F. Holcomb, Ponca
Dr. and Mrs. J. William Hock, Oklahoma City
Mr. and Mrs. Roger Hornbeck, Oklahoma City
Mr. and Mrs. John Horscher, Altus

SUPPORTERS

Mr. and Mrs. Charles P. Horton, Altus
Mrs. Leslie Howard, Lawton
Mr. and Mrs. Alexander Hruby, Duncan
Mrs. Elizabeth Huckleby, Tulsa
Mr. and Mrs. Clifford Huckleby, Oklahoma City
Dr. and Mrs. David Huey, Altus
Mr. and Mrs. Clark Huey, Altus
Mrs. Hannea Hoffman, Oklahoma City
Dr. and Mrs. Martin Hultshuler, Altus
Ms. Marisue Hurley, Altus
Mr. and Mrs. JT Hurst, Mangum
Mrs. Roseann Huotman, Norman
Mr. and Mrs. Steve Hanson, Ponca City
Mr. and Mrs. Merle Hysinger, Altus
Mr. and Mrs. Millard Ingram, Ardmore
Mr. and Mrs. Billy Jones, Ponca City
Mr. and Mrs. James Lewis, Oklahoma City
Mr. and Mrs. Ludwig Isenberg, Ardmore
Val's 'A' About Time, Altus
Mr. and Mrs. Jon Jackson, Altus
Jackson County OREA, Headrick
IBH Automotive Supply, Altus
Jewel Box Theatre, Oklahoma City
Mr. and Mrs. James Johnson, Tulsa
Mrs. Lloyd Johnson, Tulsa
Dr. and Mrs. William Jolly, Lawton
Mr. and Mrs. David Jones, Oklahoma City
Mr. Don Jones, Lawton
Mr. and Mrs. Kenneth Jones, Tulsa
Mr. and Mrs. Wilbur Jones, Ardmore
Mrs. Mary Stanton Jones, Ardmore
The Junior Welfare League, Edin
Mr. and Mrs. Ralph Kampmiller, Ardmore
Mr. and Mrs. Mark Keeley, Talahogah
Marilyn Beeson Kelley, Norman
Mr. and Mrs. Walter Kelley, Norman
Mr. and Mrs. Adam Kelly, Brewster
Mr. and Mrs. Royce Kelly, Tulsa
Mr. and Mrs. JC Kennedy, Lawton
Kennedy & Ford Insurance, Lawton
Li Col. and Mrs. Gordon Kessinger, Altus
Mr. and Mrs. Dale Kester, Houston, TX
Ms. Neena Kid, Weverka
Mr. and Mrs. Jon Kidwell, Altus
Mr. and Mrs. Larry King, Altus
The King Foundation, Altus
Mr. WW Knitz, Oklahoma City
Kiwanis Club of Midwest City, Midwest City
Mr. and Mrs. Don Kizlar, Altus
Mr. and Mrs. Donald Kitch, Hobart
Mr. and Mrs. Robert Kopycky, Norman
Mr. Julian Kornfeld, Oklahoma City
Mr. and Mrs. RH Krennon, Tulsa
Ladies of the Leaf, Ardmore
Mr. and Mrs. Philip Lanford, Altus
Mr. and Mrs. TN Law, Jr., Oklahoma City
Lawson Women's (Norman), Lawton
Dr. and Mrs. JH Lee, Altus
Mr. and Mrs. Larry Lee, Oklahoma City
Dr. Jay Lemaize, Moore
Mr. and Mrs. Leonard Lewis, Stillwater
Dr. Joseph Leonard, Edmond
Dr. and Mrs. Frank Letcher, Tulsa
Mr. and Mrs. Brad Lovelace, Altus
Mr. and Mrs. Duell Lovelace, Altus
Dr. Bertha Levy, Oklahoma City
Mr. and Mrs. David Levy, Norman
Mr. and Mrs. Charles Lewis, Oklahoma City
Lewis Manufacturing Co., Oklahoma City
Ms. Mary Lhevine, Tulsa
Mr. and Mrs. John Logi, Altus
The Lousa Club, Mangum
Ms. Elizabeth Litch, Altus
Mr. and Mrs. Jim Loftis, Frederick
Mr. and Mrs. James Long, Seattle, WA
Mr. and Mrs. Henry Lopez, Altus
Mr. and Mrs. Gene Love, Lawton
Dr. and Mrs. James Love, Oklahoma City
Lowell-Tins Funeral Home, Altus
Mr. and Mrs. Jerry Lucas, Elmer
Ms. Adelaide Lutz, Oklahoma City
Mr. and Mrs. Richard Lynn, Oklahoma City
MacDowell Club of the Allied Arts, Altus
Dr. and Mrs. Wilbur Mathews, Oklahoma City
Ms. Charlotte Mansfield, Chowday
Mr. and Mrs. Richard Marble, Oklahoma City
Mr. and Mrs. John Marchal, Altus
Master's Hallmark, Altus
Charles and Bonnie Mart, Ardmore
Flora Don Martin, Oklahoma City
Mr. and Mrs. Wm. Charles Martin, Altus
Mr. John Martin, Altus
Ms. Freda Ashley Martin, Altus
Mr. Stanley McApline, Altus
Mr. and Mrs. Beverly McBride, Oklahoma City
Mr. and Mrs. Don McCarty, Piedmont

SUPPORTERS

Mr. and Mrs. JW McConnell, Stillwater
Mr. and Mrs. Robert McCormick, Jr., Stillwater
Mr. and Mrs. Walter McCoy, Oklahoma City
Mrs. Yvonne McDaniels, Mangum
Mr. and Mrs. Kay McDaniel, Oklahoma City
LTC (Ret.) and Mrs. Samuel McKenty, Lawton
Ms. Beverly McKinley, Altus
Mr. & Mrs. Kenneth McKinley, Oklahoma City
Mr. and Mrs. Lucy McLaughlin, Oklahoma City
Mr. and Mrs. Larry McLaughlin, Altus
Mr. and Mrs. Tim McLaughlin, Oklahoma City
Mr. and Mrs. Dan McMahon, Altus
Mr. and Mrs. Kay McMahon, Altus
Mr. and Mrs. Robert McMahon, Altus
Mr. Martin McNamee, Edmond
Lynn C. McTear, Norman
Tamm Meadows, Altus
Mr. Mac Means, Oklahoma City
Rev. William Merrill, Sawnee, TN
Mr. and Mrs. Phillip Meyer, Altus
Dr. David Merritt, Oklahoma City
Mr. Gill Miller, Altus
Li Col. (Ret.) and Mrs. Walter Miller, Altus
Mr. and Mrs. Rudolph Miller, Stillwater
Mrs. Julia Miller, Oklahoma City
Ms. Susan Miller, Norman
Mr. and Mrs. Joe Milson, Altus
Mr. and Mrs. Richard Milner, Oklahoma City
Mr. and Mrs. Barry Mock, Altus
Mr. and Mrs. John Mock, Altus
Mr. and Mrs. Paul Mock, Altus
Dr. Malcolm Moore, Ardmore
Mr. Kravis Moore, Norman
Mr. and Mrs. Phil Moss, Altus
Ma Phi Epston, Mrs Kaypa Chapman, Norman
Dr. and Mrs. James Mott, Oklahoma City
Dr. and Mrs. Ken Mui, Oklahoma City
Mrs. Roseann Mulford, Tulsa
Mr. and Mrs. John Munkay, Lawton
The Munkay Art Gallery, Oklahoma City
N&K Furniture, Altus
Mrs. Judy Nalish, Tulsa
Mr. and Mrs. Jerry Nason, Hobart
Mr. and Mrs. Ron Nason, Edin
Mr. and Mrs. Don Nesser, Elk City
The Newday Family Nursing, Norman City
Mr. and Mrs. William Newman, Norman
Ms. LaVerne Newton, Blair
Mr. and Mrs. John Nichols, Oklahoma City
Mr. and Mrs. Larry Nichols, Oklahoma City
Ms. Rodney Nichols, Altus
Ms. Laura Niglatzo, Edmond
Mr. and Mrs. Don Nolan, Altus
Mr. and Mrs. James Niess, Oklahoma City
Mr. and Mrs. Don Norris, Altus
Mr. Richard Norville, Oklahoma City
Ms. Lynne D. Norvak, Tulsa
Mrs. Don O'Neil, Oklahoma City
Mr. and Mrs. Ted Olsen, Altus
OK-1 Manufacturing Co., Altus
Dr. and Mrs. Ladd Oulfield, Hubbard
Mr. and Mrs. Tom Ollman, Oklahoma City
Dr. and Mrs. Samuel Ollman, Oklahoma City
Hon. Marian Opat, Oklahoma City
Dr. and Mrs. Steven Opat, Oklahoma City
Mr. and Mrs. William Opat, Altus
Dr. and Mrs. Ross Osterhout, Altus
OTT, Altus
PAH Music Co., Altus
Mr. and Mrs. Richard Parker, Oklahoma City
Ms. Beverly Paquin, Altus
Mrs. Kathryn Penock, McAlester
Mr. and Mrs. Jim Pagan, Norman
Mr. and Mrs. Kent Paffen, Altus
Mr. and Mrs. Art Pamberton, Jr., Oklahoma City
Ms. Marla Pendleton, Oklahoma City
Mr. and Mrs. Tyrone Pensick, Altus
Ms. Elizabeth Perkins, Edmond
Cynthia Bond Perry, Oklahoma City
Perryman Farms, Altus
Dr. and Mrs. David Poynt, Oklahoma City
Mr. and Mrs. John Pugh, Altus
Mr. and Mrs. Donald Phillips, Oklahoma City
Mr. and Mrs. John Phillips, Stillwater
Phillips Music Store, Lawton
Mrs. Betty Pincham, Lawton
Ponca City News, Ponca City
Mr. and Mrs. Richard Pope, Altus
Mr. Steve Porter, Oklahoma City
Pony-Newsweek Cable, Oklahoma City
Mr. and Mrs. DL Potter, Tulsa
Prestige Realty, Altus
Mr. and Mrs. Lesley Price, Weatherford
Mr. and Mrs. Norris Price, Lawton
Print Sales, Altus
Pur-Pat Sales, Altus
Mr. and Mrs. Glen Pybus, Mustang

SUPPORTERS

Mr. and Mrs. William Rabal, Ardmore
Randall, Bowdoin, Donahue & Co., Edin
Mr. and Mrs. Howard Rankin, Hobart
Red River Arts Council, Durant
Mrs. Charles Rankin, Oklahoma City
Mr. and Mrs. Robert Reader, Altus
Mr. and Mrs. Richard Reid, Blair
Mr. and Mrs. Graham Reberg, Bartlesville
Ms. Marie Reardon, Oklahoma City
Mr. and Mrs. John Reeb, Oklahoma City
Concho Reg Store, Altus
Mrs. Cecilia Reyes, Lawrence, KS
Ms. Anna Laura Reynolds, Elk City
Mr. and Mrs. Art Rieby, Genesee
Mr. and Mrs. Robert Robbins, Altus
Dr. and Mrs. Alfred Roberts Altus
Mr. and Mrs. Isahay Roberts, Altus
Dr. Dean Robertson, Oklahoma City
Mr. and Mrs. Bob Robertson, Seneca
Mr. Jay Robertson, Mangum
Ms. Francis Robertson, Mangum
Dr. and Mrs. Malcolm Robinson, Oklahoma City
Mr. and Mrs. Tom Rob, Oklahoma City
Ruff CO, Altus
Ms. Geneva Rogers, Tulsa
Mr. and Mrs. David Rodsch, War Acres
Dr. Alton Ross, Norman
Mr. and Mrs. Edwin Ross, Widdita, KS
Jean Rodsch, Oklahoma City
Mr. and Mrs. Lynn Rowland, Altus
Mr. and Mrs. Dewey Ryan, Altus
Dr. and Mrs. Melvin Russell, Altus
Mrs. Gloria Rustman, Altus
Ms. Elizabeth Ryan, Duncan
Sapphire Saltska, Edmond
Dr. Andrew Sanchel, Oklahoma City
Mrs. Julia Santam, Tulsa
Mr. and Mrs. Robert Sanders, Oklahoma City
Mrs. Bob Scarborough, Altus
Ms. Mrs. Gary Schmidt, Norman
Mrs. Claire Schreiner, Oklahoma City
Mr. Joe Shea, Oklahoma City
Mr. and Mrs. Frank Ship, Seminole
Mr. and Mrs. David Ship, Oklahoma City
Mr. and Mrs. George Sizemoff, Oklahoma City
Mr. and Mrs. Paul Skifford, Lawton
Mr. and Mrs. Ann Skifford, Altus
Ned and Philip Shaif, Altus
Mr. and Mrs. John Shadley, Tulsa
Mr. and Mrs. James Shaw, Altus
Mrs. Grace Shaw, Stillwater
Mr. and Mrs. George Shepherd, Oklahoma City
Ms. Janice Sherr, Altus
Sherrington Playhouse, Hobart
Mrs. Eva Showalter, Hobart
Dr. Donnie Strick, Oklahoma City
Dr. Fred Sula, Oklahoma City
Dr. Paul and Annula Silverstein, Oklahoma City
Mr. and Mrs. Roger Simons, Oklahoma City
Mr. Brad Singer, Oklahoma City
Dr. Harry Sigmon, Oklahoma City
Mr. and Mrs. Kevin Sings, Mangum
Mr. and Mrs. Gordon P. Smalls, Altus
Dr. and Mrs. Gary D. Smith, Altus
Mr. and Mrs. Elmer Smith, Clinton
Mr. and Mrs. Gerald Smith, Altus
Mr. and Mrs. John Smith, Marlow
Ms. Patsy Smith, Lawton
Mr. and Mrs. Riley Smith, Altus
Mr. and Mrs. Wayne Smith, Altus
Mr. Wilkison Smith, McAlester
Mrs. Jackie Siedl, Altus
Mrs. Virginia Siedl, Altus
Mrs. George Sioke, Tulsa
Mr. and Mrs. Gene Southall, Altus
Southwest Orthopedic, Altus
Mr. and Mrs. Donald Spight, Lawton
Mr. and Mrs. Ross Singer, Weatherford
Mr. and Mrs. Bill Starr, Altus
Ms. Phoebe Starzak, Altus
Mrs. John Swartz, Tulsa
Ms. Don Stephens, Lawton
Mr. and Mrs. John Stiles, Oklahoma City
Stillwater Arts and Humanities Council, Stillwater
Dr. Earle Sline, Jr., Altus
Ms. Frances Stone, Altus
Mr. and Mrs. Richard Strick, Lawton
Mr. and Mrs. Robert Sullivan, Oklahoma City
Super Stores, Altus
Mr. and Mrs. Bob Suter, Altus
Ms. Mariel Cohen and
Mr. Patrick Szasz, Lawrence, KS
Mr. and Mrs. Richard Szasz, Altus
Ms. Tui Tafinger, Altus
Tua Bea Signs Honorary Bad Security, Norman
Mr. and Mrs. Marc Taylor, Altus
Mr. and Mrs. Don Teal, Lawton

SUPPORTERS

Mrs. CL Terrellier, Altus
Mr. Miguel Tereshko, Oklahoma City
Mrs. Dorothy Tadini, Oklahoma City
Mr. and Mrs. Jack Thaggard, Altus
Mr. and Mrs. Thomas Thoms, Lone Wolf
Dr. and Mrs. John Thomas, Okmulgee
Mr. and Mrs. William Thomas, Altus
Ms. Lucille Thomas, Altus
Mr. and Mrs. Charles Thomas, Altus
Mr. and Mrs. Garland Thompson, Altus
Mr. and Mrs. James Thompson, Ardmore
Mr. Robert Thorne, Oklahoma City
Mr. and Mrs. Marvin Thorne, Lone Wolf
Mr. Charles Tighman, Oklahoma City
Mr. and Mrs. Sonny Tins, Altus
Dr. and Mrs. Harold Tinsler, Clinton
Ms. Mary I. Tolbert, Hobart
Ms. Jennifer Tott, Broken Bow
Mr. and Mrs. Larry Tressler, Hobart
Mr. and Mrs. Jack Tressler, Edmond
The Tribune, Bethany
Mr. and Mrs. Louis Tost, Oklahoma City
Mr. and Mrs. Morrison G. Tucker, Oklahoma City
Mr. Leo B. Turk, Oklahoma City
Mr. and Mrs. David Turk, Altus
Mr. and Mrs. James Turentine, Ardmore
U-Key Key Mini-Storage, Altus
Mr. Robert Underwood, Humble, TX
Mr. and Mrs. Clyde Van Arman, Altus
Mr. and Mrs. David Vanella, Altus
Mr. James Vaughn, Oklahoma City
Dr. and Mrs. Bill Veazey, Ardmore
Mrs. Sylvia Vasek, Oklahoma City
Dr. and Mrs. Thomas Vogel, Oklahoma City
Mr. Tom Vollbrecht, Edmond
Mrs. Nancy Vance, Norman
Walt-Mart, Altus
Mrs. Charles Walbert, Oklahoma City
Mr. and Mrs. John Walker, Altus
Mr. and Mrs. Fred Wall, Altus
Mr. and Mrs. Kenneth Walker, Edmond
Mr. and Mrs. Kenneth Walter, Elk City
Ms. Julie Ward, Sapulpa
Ms. Laurel Warner, Oklahoma City
Watonga Community Theater, Watonga
Dr. O. Alton Warner, Oklahoma City
Mr. and Mrs. Steve Warner, Altus
Mr. and Mrs. Norm Weber, Altus
Wednesday Morning Musicale, Tulsa
Dr. and Mrs. James Wendrick, Oklahoma City
Mr. and Mrs. Fred West, Altus
Mr. and Mrs. Mark Whitlock, Altus
Dr. and Mrs. OD Wilford, Clinton
Mr. and Mrs. George Wilcox, Altus
Mark Wilcher, Altus
Wilco Construction, Altus
Wilcoxon's Karate Center, Altus
Ms. Leslie Mook Wilman, Oklahoma City
Dr. and Mrs. Phillip E. Willey, Altus
Mr. Brent Willey, Altus
Mr. and Mrs. Eddie Williams, Altus
Mr. and Mrs. Murray Williams, Altus
Mr. and Mrs. Ted Williams, Ponca
Mr. Sherwin Williams, Altus
Mr. and Mrs. Tom Williams, Jr., Oklahoma City
Wilsons Chrome-Strip-Gold
Wilmes Ford-Lincoln-Mercury, Altus
Mr. and Mrs. Bill Wilson, Altus
Mr. and Mrs. John Q. Wilson, Edmond
Mr. and Mrs. Steve Wilson, Edmond
Ms. Patti Johnson Wilson, Tulsa
Ms. Carolyn Wilson, Mangum
Mrs. Ann Winkle, Altus
Mr. and Mrs. Harbair Wint, Elk City
Mrs. Fred Wintner, Altus
Mr. and Mrs. William Mangum
Woodward's Music Club of Ponca, Mangum
Dr. and Mrs. Peter Wong, Edmond
Dr. and Mrs. Neil Woodward, Oklahoma City
Mrs. Carol Wood, Stillwater
Margaret and Harold Wozniak, Altus
Mr. and Mrs. Mike Wozniak, Altus
Mr. and Mrs. Mitch Worell, Altus
WOGC Pioneer Music Club, Tulsa
Dr. and Mrs. Ben Wray, Edmond
Mr. and Mrs. Christopher Wray, Altus
Mr. and Mrs. Robert Wright, Stillwater
Mr. and Mrs. Larry Wright, Norman
Ms. Nancy Yarb, Altus
Mrs. Biing Q. Ye, Oklahoma City
Dr. and Mrs. James York, Norman
Mr. and Mrs. Jimmy Young, Altus
Mr. and Mrs. Lawrence Young, Edmond
Mr. and Mrs. Don Zachritz, Oklahoma City
Mr. Fred Zala, Oklahoma City
Mr. Richard Zala, Oklahoma City

APPLAUSE! APPLAUSE!

OKLAHOMA ARTS INSTITUTE DONORS

ALUMNI ASSOCIATION MEMBERS

\$1000 and above

Jessie Hoffman Smith, Oklahoma City

\$250-\$999

Bob Bright, Oklahoma City
Nick Kyle and Rose Allison, Oklahoma City
Timothy Blake Nelson, Tulsa
Paula Rawls, Oklahoma City
David Stinchcomb, Oklahoma City
Dr. and Mrs. Clarence Stuen, Weatherford
Ed Teis, Tulsa

\$25-\$249

Jennifer Addington, Edmond
Elizabeth Ahern, Laurel, MD
Jeff Alexander, Okmulgee
Jonna Anderson, Oklahoma City
Brooks Archer, Hammon
Dylan Arns, Tulsa
Ashley Argo, Norman
Alcina Allwell, Lawton
Jack Baker, Tahlequah
Mitch Barnes, Broken Arrow
Suzanna Barrios, Tulsa
Rosemary Bell, Denton, TX
Megan Benson, Norman
Matthew Berry, Ed
Pamela Black, Oklahoma City
Melinda Siles Blackman, Oklahoma City
Kay Botton, Norman
Steve Bruno, Oklahoma City
Claudia Buckmaster, Norman
Marsha Cannon, Weatherford
Thomas Cannichael, Oklahoma City
Marilyn Carver, Tulsa
Teryllyn Cator, Norman
David Chamberlain, Bartlesville
Ryan Clayburn, Ponca
William Coe, Austin, TX
Glenn Cope, Tonkawa
Carol Conley, Ft. Gibson
Mr. and Mrs. Doug Dalton, Altus
John Dalton, Oklahoma City
Christie Davis, McAlester
Cory Davis, Norman
Wilma DeBerry, Norman

Linda DeBerry, Oklahoma City
W. Richard Dixon, Norman
Marge Dowley, Weatherford
Peggy Dunn, Norman
Sarah Duan, Norman
Kathie Dyche, Ed
Lawanna Emerson, Chickasha
Sherrin Evans, Oklahoma City
Jared Ferguson, Altus
Erian Fitzgerald, Tulsa
Paundra Fitzgerald, Oklahoma City
Margaret Flansburg, Oklahoma City
Brooks de Odis Flax, Ada
Nancy Fong, Oklahoma City
Daniel Foutka, Duncan
Jay Frym, Webster Groves, MO
Jason Fresh, Norman
Jeff Gaynor, Stillwater
Kay George, Ardmore
Douglas Gottfried, Edmond
Milena Govich, Norman
Cheryl Gravis, Tulsa
Elizabeth Green, Norman
Eric Green, Norman
Charles Hair, Tulsa
Lisa Hampton, Oklahoma City
Lisa Harkin, Moore
William Hartman, Chickasha
Judy Havens, Edmond
Dorothy Henaley, Oklahoma City
Paige Hill, Oklahoma City
Mr. and Mrs. Keith Hoel, Gustaf
Jack Hoffman Kroll, Oklahoma City
Laurie Johnson, Yellow Springs, OH
Carol Holmgren, Tulsa
Karen Young Holt, Oklahoma City
Paul Hu, Stillwater
Marian Hulsey, Oklahoma City
B.J. Hunter, Ponca City
Amy Beth Johnson, Tulsa
Carric Johnson, Tulsa
Benjamin Johnson, Denton, TX
Cly Johnson, Moore
Timothy Johnson, Britton
Misti Johnson, Hanover, NH
Mr. and Mrs. Glen Jones, Muskogee
Mr. and Mrs. John Jones, Bartlesville
Drew Donnelly Jones, Bartlesville
Eric Jones, Norman
Sam Joyner, Lawton

Leah Kaiser, Chicago, IL
Connie Keller, Broken Arrow
Joyce Kelley, Norman
Stacy Kidd, Stillwater
Mr. and Mrs. J. Kent Kidwell, Edmond
Kathie Kish, Norman
Ginny Kish, Lawton
Scott Klein, Lawton
Claud Klitta, Shawnee
Linda Kolbelin, Weatherford
Janis Korhasek, Fayetteville, NC
Mary Krutka, Altus
Carolyn Lockey, Henryetta
Brent Larson, Stillwater
Sandra Lason, Norman
Mr. and Mrs. Bill Layton, McAlester
John Leggett, Bartlesville
Travis Lockwood, Broken Arrow
Mary Logan, Oklahoma City
Matt Mar, Ardmore
Mary Kraska, Altus
Kathleen Massey, Oklahoma City
Lola McCracken, Ponca City
Melrose McCray, Ardmore
Martanna McGrew, Lawton
Julia McElaine, Stillwater
Katy McManus, Sapulpa
Stephanie Michaelson, Norman
Kyle Millar, Chesterfield, MD
Suzanne Millison, Altus
Mr. and Mrs. James Monahan, Altus
Sabrina Nicholas, Kingfisher
Vivian Nix, Oklahoma City
Polly Okban, Oklahoma City
Kevin Goff Parker, Oklahoma City
Pam Pardo, Fort Smith, AR
Susan Poppe, Norman
Kay Pfanner, Del City
Christina Poodack, Norman
Todd Price, Tulsa
Mr. and Mrs. Brian Rader, Tahlequah
Michael Rabal, Ardmore
Linda Edlin, Oklahoma City
Maxine Recco, Okay
Sara Richardson, San Diego, CA
Linda Rogers, Mustang
Linda Kennedy Rossiter, Oklahoma City
Larry Radtger, Burlington, VT
Stephanie Salaska, Edmond
Carolyn Sanders, Sayre

Amy Schoeffel, Oklahoma City
Anthony Scott, Jones
Marsha See, Oklahoma City
Merrilee Seitzinger, Stillwater
Breana Soby, Dallas, TX
Donna Self, Altus
Carl Senzaba, Norman
Melanie Seward, Oklahoma City
Susan Shaugnessy, Norman
LexAnn Shelton, Sapulpa
Charles Sides, Drumright
Sun Slade, Midwest City
Dr. Stephen and Roberts Stone, Oklahoma City
Dr. Rose Marie Smith, Edmond
Toni Solizano, Ada
Kenneth Southard, Ada
Jennifer Stewart, Stillwater
Ashley Stover, Oklahoma City
Audrey Streeman, Oklahoma City
Ruth Swenney, Mangum
James Taggart, Tulsa
Karen Thomas, Muskogee
Billie Sue Thompson, Broken Arrow
Tracy Thomson, Paris Valley
Ellen Trowley, Chicago, IL
Cara Townsend, Ada
Dixie Tyler, Vian
Theresa Unsted, Duncan
Brooks VanDyne, Edmond
Vela Vincent, Guthrie
Nguyet Vo, Houston, TX
Trang Vo, Tulsa
Kathryn Vogel, Tulsa
Linda Watson, Asakarah
Linda Webster, El Reno
Chloe Weiss, Tulsa
Chappell Westlake, Beverly Hills, CA
Bryan Weir, Midwest City
Sharon Wilbur, El Reno
Sandra Williams, Perkins
Edna Williams, Lawton
Linda Miller Wilson, Edmond
Michelle Wynn, Minneapolis, MN
Curtaine Wolfe, Sentinel
Betty Wood, Norman
Mike Wright, Stillwater
Melissa Wynn, Pepperville, MA
Christa Zaccarello, Sapulpa
Steven Zagofer, McAlester
Alisha Zwitz, Oklahoma City

ADVISORY PANELS

OKLAHOMA ARTS INSTITUTE

Dance Advisory Panel

Mary Margaret Holt, chair
Lili Livingston
Charlotte Lyke
Bryan Pitts
Claire Schwartz
Miguel Terekhov
Kathy Walker
Ko Yukihiro

Visual Arts Advisory Panel

Jack Bryan, chair
Carol Beesley
George A. Bogart, Jr.
Jon Burris
Dan Kiacz
D.J. LaFon
Tom Manhart
Paul Medina
Andrew Phelan
Tom Toperzer

Writing Advisory Panel

Francine Ringold, chair
William Epperson
Nancy Goodwin
Joan Isom
Manly Johnson
Leonard Leff
Robert Spoo
Clif Warren
Jim Yoeh

Music Advisory Panel

Allan Ross, chair
John Clinton
Joel Levine
Marjorie Malone
Bernard Rubenstein
Dennis Shrock
Jerry Neil Smith

Theatre Advisory Panel

Ed Shern, chair
Jo Ann Muchnick, co-chair
David Cook
David Fennema
Ted Herstand
Ann Sheffield
Max Weitzenhoffer

SPREAD THE WORD

THE OKLAHOMA SUMMER ARTS INSTITUTE

A Chance of a Lifetime for Oklahoma's young artists!

"I think of Quartz Mountain as a truly magical, sacred place - a place of solace and learning unlike any other. My four summers at Quartz Mountain literally changed my life forever. I learned about discipline, about dedication, about individuality, and the importance of friendship."

- Alyssa Branch, OSAI Alumna

The Oklahoma Summer Arts Institute is a two week residential school which provides intensive pre-professional training to artistically talented Oklahoma high school students, ages 14 - 18. Through a statewide, competitive audition process, 230 students are selected each year to attend in one of the eight disciplines offered: acting, ballet, choral music, drawing, modern dance, orchestral music, photography or poetry.



The Institute takes place each June at Quartz Mountain lodge, in southwest Oklahoma. In the isolated and beautiful natural environment of Quartz Mountain, students are immersed in classes, seminars, rehearsals and performances. Like at the Fall Arts Institutes, Summer Institute courses are taught by professional artists of national reputation. Small classes allow a one-on-one relationship between student and instructor. The daily schedule includes six hours of class and additional time set aside for coaching and/or individual study. Evening lectures, demonstrations, and performances give students the opportunity to experience each of the art forms represented at the Institute. A positive peer group of other talented and enthusiastic teens from all over the state allows students to make lifetime friendships and strengthen their confidence in the value of the arts to others as well as to themselves.

Students of the Oklahoma Summer Arts Institute learn a lot about their art form. But just as important are the lessons they learn about themselves. The rigorous schedule requires discipline and focus and often results in a stretching of students' abilities beyond what they believed themselves capable of. The Arts Institute environment can open up whole realms of possibility and creativity within the students who attend, challenging them to even greater potential, higher goals and increased confidence and enthusiasm. These are strengths they will apply not just in the arts, but in every area of their life, long after the summer is over.

Do you know a young Oklahoman who would benefit from such an experience? Fill out the form below and you could help him or her take the first step to Quartz Mountain. Auditions for the 1996 Summer Arts Institute will begin in January. Application materials will become available in December.

Please send application information for the 1996 Oklahoma Summer Arts Institute to:

Name: _____

Address: _____

City: _____ State: _____ Zip: _____

Return this form to the Oklahoma Arts Institute, P.O. Box 18154, Oklahoma City, OK 73154. For more information, call (405) 842-0890.

OPERATION PHOENIX

WE'RE MOVING MOUNTAINS

In February, a fire at Quartz Mountain Lodge destroyed the dining rooms, meeting rooms, lobby, galleries and the Badger Memorial Library. It was a crushing blow to the Oklahoma Arts Institute which, over the years, had placed an incredible collection of student artwork in the public rooms of the lodge. The loss of the Badger Memorial Library was equally devastating. The library housed audio visual equipment as well as many rare books, portfolios of photos and prints, tapes, personalized scripts and screenplays, not to mention shelves of valuable collections of art books. Fortunately the lodge's guest rooms were salvageable and the fire did not touch the Arts Complex: five studio pavilions and an outdoor amphitheater constructed in 1988 with private funds matching a state appropriation.

While the Institute struggled to make a decision whether to move its programs to another location until Quartz Mountain is rebuilt, the townspeople in Altus and surrounding communities held a town meeting to pledge their support for bringing the Arts Institute back to Quartz this summer and fall. They did not want the Institute to leave, even for one season. We were touched by their commitment, and their enthusiastic support for the Arts Institute convinced us to stay at Quartz Mountain despite the fire. This summer and fall temporary facilities will be put in place for our programs as we plan the construction of new facilities for the future.

While the fire was indeed a tragedy, it also provides us a great opportunity to develop Quartz Mountain as Oklahoma's Arts and Conference

Center. In partnership with the Department of Tourism we are planning, not to re-construct the old lodge, but instead to create a state of the art conference facility which will attract groups from across the southwest. The new Quartz Mountain Arts and Conference Center will include expanded public rooms and housing which meet the standards set by the International Association of Conference Centers. Also included in the lodge will be a new library, galleries and an exhibition center of Plains Indian artifacts. Other projects include construction of a performing hall and additional student housing.

What does this mean for the Institute? A new beginning. Like the phoenix that rises from the ashes, Quartz Mountain will be reborn and with it the Oklahoma Arts Institute.

Much was lost in the fire, and our programs are facing financial hardship as a result. Fundraising is hard in this environment, particularly in the wake of the Alfred P. Murrah Federal Building disaster. But hard work is not new to the Institute, its friends and donors. We are committed to improving the quality of life in our state and to creating opportunities for young people and adults which will enable them to reach their creative potential. It's important for all of us, our students, our state and our nation.

If you can, please help the Oklahoma Arts Institute. Invest in our future because it is your future as Oklahomans.

Mary Y. Frates, President

Today, the Oklahoma Arts Institute is at
a dramatic turning point...
At stake is the
quality of life in Oklahoma...

Assist with Operation Phoenix! Be a Mountain Mover! Join the Oklahoma Arts Institute!

Your help with Operation Phoenix is essential. Never before have private donations been so critical to the future of the Oklahoma Arts Institute. Your contribution provides the lifeblood for our summer and fall programs. All donations entitle the donor to a one-year membership in the Oklahoma Arts Institute. Thank you for your help!

Name: _____

Address: _____ Home Phone: _____

City: _____ State: _____ Zip: _____ Work Phone: _____

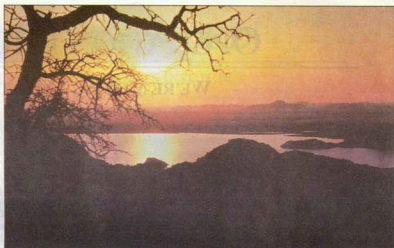
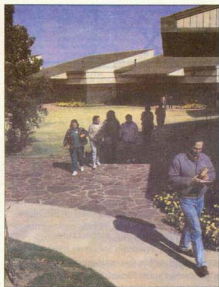
- Call me. I want to help by volunteering my time.
 I would like to join the Oklahoma Arts Institute with my gift of: _____
 Quartz Crystal Club (1,000+) Check or money order enclosed
 Voting Member (\$250 - \$999) Please Bill Me Quarterly Semi Annually
 Supporter (\$25-\$249) Charge my Mastercard Visa

Card Number: _____ Expires: _____

Name as it appears on card: _____

Authorized Signature: _____ Date: _____

Please make checks payable to the Oklahoma Arts Institute, P.O. Box 18154, Oklahoma City, OK 73154. For information 405-842-0890.
All contributions are tax deductible.



OKLAHOMA
FALL ARTS INSTITUTES

1995
COURSE CATALOGUE



OKLAHOMA ARTS INSTITUTE

720 NW 50th, P.O. Box 18154

Oklahoma City, OK 73154

Phone: 405/842-0890 Fax: 405/848-4538

1995
Arts
COUNCIL
OF OKLAHOMA

NON-PROFIT ORG.
U.S. POSTAGE PAID
PERMIT # 1056
OKLAHOMA CITY, OK