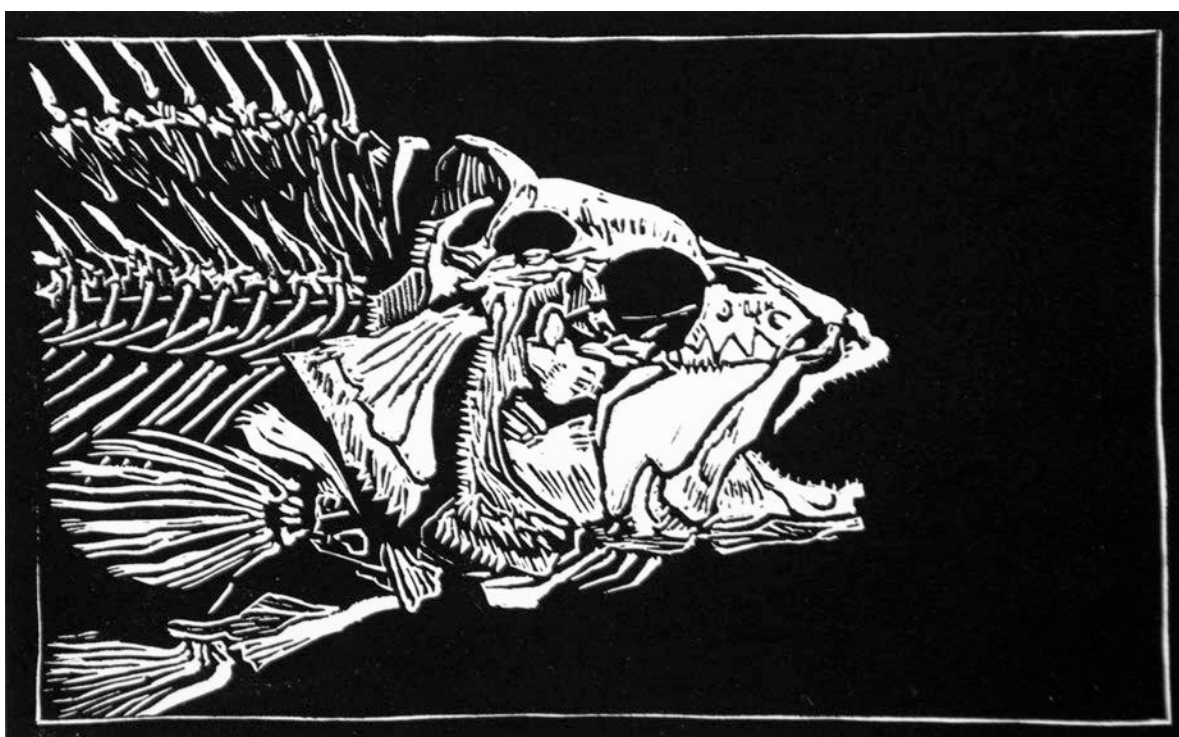




OKLAHOMA FALL ARTS INSTITUTE  
*at*  
QUARTZ MOUNTAIN

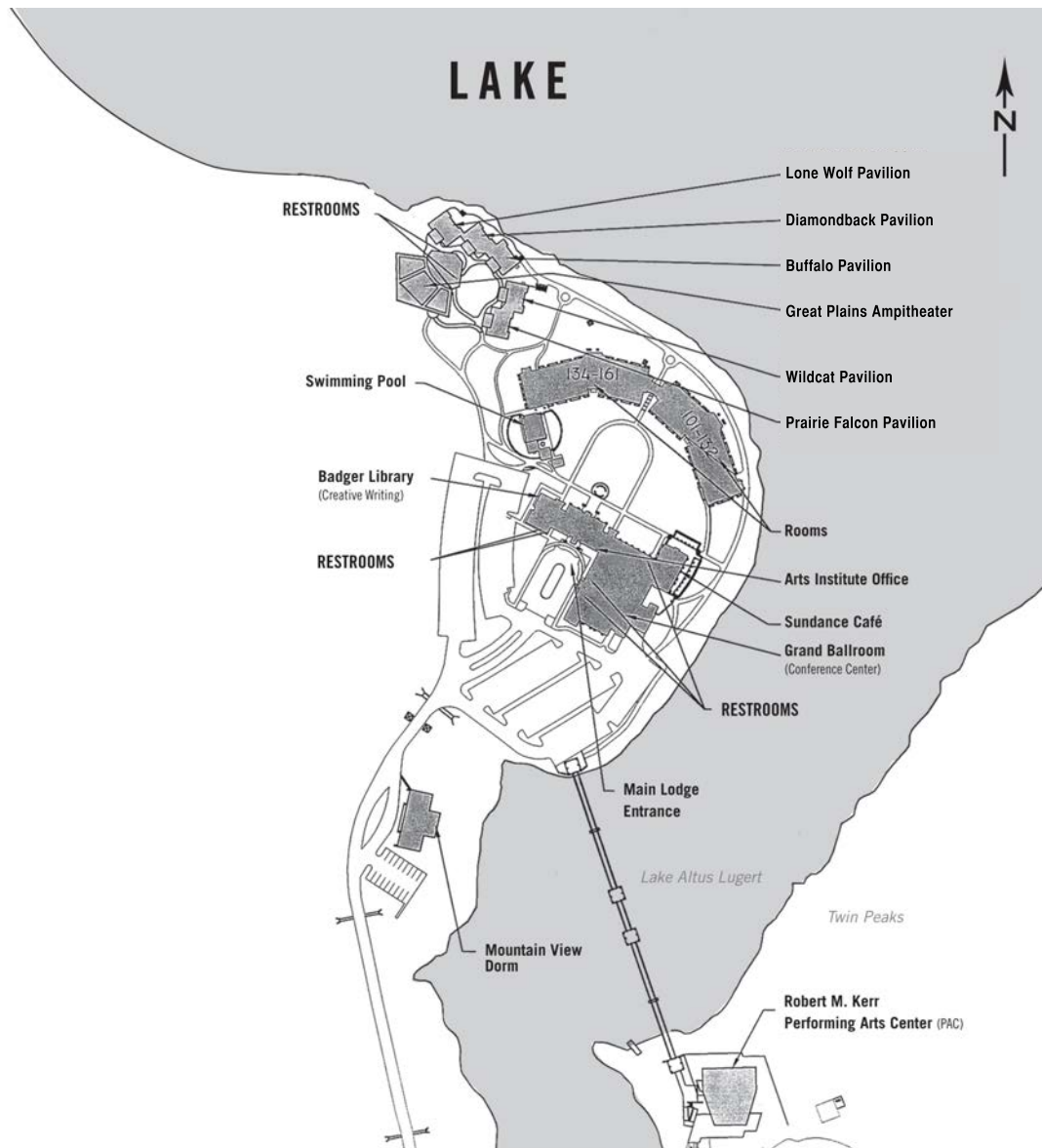
OCTOBER 16 - 19, 2014



*School of Fish*, Linocut by Yana Dyachkova, 2014 Oklahoma Summer Arts Institute Student

SCHEDULE OF EVENTS  
FACULTY BIOS  
MAPS & INFORMATION

# QUARTZ MOUNTAIN ARTS & CONFERENCE CENTER MAP



## Class Locations:

Orff-Afriqué with Kofi Gbolonyo – **Ballroom**

Writing Poems for and With Children with Marilyn Nelson – **Badger Library**

Multimedia Exploration: Unusual Collage with Joel Nakamura – **Prairie Falcon Pavilion**

Screenprint: Monotypes and Varied Editions with Lenore Thomas – **Buffalo Pavilion**

The Passionate Photographer with Steve Simon – **Lone Wolf Pavilion**

## SCHEDULE OF EVENTS

### Thursday, October 16

12 – 1:15 p.m.	Participant Registration / Lodge Lobby
1:30 – 2:30 p.m.	Participant Orientation / Ballroom
2:30 – 5:30 p.m.	Classes / Class Locations
5:30 p.m. – 11 p.m.	Open Studios
5:45 – 6:15 p.m.	Meet the Artist: Joel Nakamura / Ballroom
6:15 – 7 p.m.	Yoga / Wildcat Pavilion
6:15 – 8:15 p.m.	Dinner / Sundance Café
7:30 p.m.	Conversation with the Artists: Visual Arts Panel Discussion / Badger Library

### Friday, October 17

7 – 9 a.m.	Breakfast / Sundance Café
7 – 9 a.m.	Open Studio
8:30 – 9 a.m.	Meet the Artist: Steve Simon / Ballroom
9 a.m. – 12 p.m.	Classes / Class Locations
12 – 2 p.m.	Lunch / Sundance Café
12:15 – 1 p.m.	Yoga / Wildcat Pavilion
2 – 5:30 p.m.	Classes / Class Locations
5:30 p.m. – 11 p.m.	Open Studios
5:45 – 6:15 p.m.	Meet the Artist: Kofi Gbolonyo / Ballroom
6:15 – 8:15 p.m.	Dinner / Sundance Café
7:30 – 9 p.m.	Elective: Aikido Self Defense / Wildcat Pavilion <i>Led by Joel Nakamura</i>

### Saturday, October 18

7 – 7:45 a.m.	Yoga / Wildcat Pavilion
7 – 9 a.m.	Breakfast / Sundance Café
7 – 9 a.m.	Open Studios
8:30 – 9 a.m.	Meet the Artist: Lenore Thomas / Ballroom
9 a.m. – 12 p.m.	Classes / Class Locations
12 – 2 p.m.	Lunch / Sundance Café
1 – 1:45 p.m.	Nature Walk / Meet in Lodge Lobby <i>Led by Quartz Mountain Naturalist Sue Hokanson</i>
2 – 5:30 p.m.	Classes / Class Locations
5:30 p.m. – 11 p.m.	Open Studios
5:45 – 6:15 p.m.	Meet the Artist: Marilyn Nelson / Ballroom
6:15 – 8:15 p.m.	Dinner / Sundance Café
7:30 – 9 p.m.	Elective: Screenprinting / Buffalo Pavilion <i>Led by Marwin Begaye. Designs provided for you; all you need to bring is a light-colored item of clothing! We also have plain shirts and other printable materials available for sale in the store.</i>

### Sunday, October 13

7 – 9 a.m.	Breakfast / Sundance Café
7 – 9 a.m.	Open Studios
8:30 – 9:30 a.m.	Classes: Clean Up & Set Up for Walk-Through
9:30 a.m.	Grand Prize Raffle Drawing / Ballroom <i>You must be present to win!</i>
9:30 – 10:30 a.m.	Self-Guided Walk-Through / All Class Locations <i>All artwork must remain displayed until 10:30 a.m.!</i>
10:30 - 11 a.m.	Check-Out / Lodge Lobby

## THE OKLAHOMA FALL ARTS INSTITUTE AT QUARTZ MOUNTAIN

**The Oklahoma Fall Arts Institute (OFAI)** is a series of weekend retreats for educators, professional artists, and amateur artists during the months of October and November. Nationally renowned artists teach classes in the visual, performing, and literary arts. Oklahoma public school teachers receive full scholarships to attend OFAI, which includes tuition, room, and board. Major funding for scholarships is provided by private donations secured by the Arts Institute, with matching funds from the Oklahoma State Department of Education. Additional program funding comes from many generous private donors, as well as from the Oklahoma Arts Council and the Oklahoma Tourism and Recreation Department.

### **Quartz Mountain Arts and Conference Center**

Quartz Mountain State Park in Lone Wolf, Oklahoma, overlooks the peaceful waters of Lake Altus-Lugert. An ancient, sacred, and inspiring site, Quartz Mountain was ceremonial grounds for Kiowa, Comanche, Wichita, Apache, and Caddo tribes. Today, Quartz Mountain is home to an Arts and Conference Center, an ideal retreat for arts immersion. With the 700-seat Robert M. Kerr Performing Arts Center, a state-of-the-art darkroom, five studio pavilions, an outdoor amphitheater, and the Beverly Badger Memorial Library, the Arts and Conference Center is the region's artistic epicenter. Nature lovers enjoy hiking and biking trails, bird watching, and unique Oklahoma ecosystems. The Arts and Conference Center at Quartz Mountain is truly an Oklahoma treasure.

### **Quartz Mountain History**

Archeological evidence suggests Paleo-Indian people hunted woolly mammoth near Quartz Mountain between 11,200 and 20,000 years ago. Excavations at the Cooperton Site in Kiowa County provide the earliest known evidence of people in the state of Oklahoma.

Spain and France traded Quartz Mountain several times before the U.S. bought the area as part of the Louisiana Purchase in 1803. Several Native American tribes occupied the area until the late 1880s. In 1887, Quartz Mountain was affected by the Gold Rush, but the U.S. military regained control of the region and opened the land to white settlement in 1901. In 1937, Quartz Mountain officially became a state park.

The tiny town of Lugert was flooded to create a municipal water supply for Altus in 1927. Today, Lake Altus-Lugert also provides irrigation for 48,000 acres of southwestern Oklahoma farmland.

### **Quartz Mountain Ecology**

Quartz Mountain State Park lies in a "buffer zone" between drier western climates and wetter eastern ones. As a result, there is a great diversity of habitats and plant and animal species inside of the park.

Quartz Mountain is in the mixed-grass plains district. Tall grasses and herbs grow on valley floors, while short grasses, prickly-pear, and yucca grow on the unprotected hilltops. The most common type of tree in Quartz Mountain State Park is the scrub oak. Many types of flowers grow at Quartz Mountain, including gaillardia (Indian Blanket), coreopsis, prairie larkspur, sunflower, spiderwort and milkweed.

Three distinct habitat regions ensure the presence of a variety of amphibians and reptiles. The eastern bullfrog and the narrow-mouthed salamander live near the lake and a variety of toads and lizards live on the hilltops. Several species of snakes, including the rattlesnake, live in the hills and in the central region of the park. Many mammalian species also make Quartz Mountain their

home, including the bobcat, eastern cottontail rabbit, desert cottontail, raccoon, jackrabbit, deer mouse, ground squirrel, coyote, and beaver.

Quartz Mountain State Park is a paradise for bird watchers. The majestic bald eagle winters at Quartz Mountain, and white pelicans and Canadian geese migrate through the park in the spring and fall. In the summer, the Eastern black-chinned hummingbird, bluebird, flickers, woodpecker, and wren live at Quartz Mountain. The lake and streams draw ducks and cranes. Red-tailed hawks and great horned owls make the mountains and grasslands their permanent homes.

Since Quartz Mountain State Park is a region of high diversity and physiographic contrast, the area is particularly suited for the occurrence of rare or endangered species. Some of the rare and endangered flora and fauna found at Quartz Mountain include the prairie falcon, golden eagle, bald eagle, green toad, mountain lion, mountain barrel cactus, waterfalls phlox, and western live oak.

### **Quartz Mountain Art Collection**

Owned by the Oklahoma Arts Institute, the majority of the Quartz Mountain Art Collection is on permanent loan to the state of Oklahoma for exhibition at the Conference Center. The art collection serves as a visual record of the history of Quartz Mountain and the Arts Institute. A self-guided walking tour booklet is available to borrow or purchase at the OFAI office or the lodge front desk.

The collection is built around a series of eight murals displayed in the lodge lobby entitled *Quartz Mountain: Sacred Ground*, by Oklahoma artist Mike Larsen. The first four murals, *The Past*, focus on Kiowa history, including the forced relocation from Yellowstone to Oklahoma, the sacred Sundance, the great Kiowa chief Satanta, and the Black Legging Warrior Society. The last four murals, *The Future*, explore Quartz Mountain as a center of arts study, with depictions of Oklahoma Arts Institute faculty and students.

Sculptures by Allan Houser and Jesús Moroles adorn the lodge lobby, and Fritz Scholder's artwork is featured in the lodge hallway. Two large paintings of deer by Oklahoman Joe Andoe adorn the ballroom foyer. In the Sundance Café, Don Nice's paintings portray the natural environment of Quartz Mountain and OSAI disciplines. Each guestroom at Quartz Mountain includes an original print by Daniel Kiacz, a great supporter of the Oklahoma Arts Institute. Outside, large-scale tree sculptures by Israeli artist Menashe Kadishman are the focal point of the courtyard and gardens.

Works by Summer Arts Institute students are also on display in the lodge. Visitors enjoy large-scale portraits of Quartz Mountain insects by 1992 drawing and painting students. Near the ballroom, photographs created by OSAI students from 1988-1993 are on display, and inside the ballroom there is a mural depicting earth, water, air, and fire, created by 2000 OSAI drawing and painting students.

## OFAI FACULTY

### MULTIMEDIA EXPLORATION: UNUSUAL COLLAGE • Joel Nakamura, Santa Fe, New Mexico



Award-winning artist Joel Nakamura is known for his unique style: a blend of folk art and sophisticated iconography rendered in a neo-primitive technique. He is chosen for many of his commissions for his knowledge of tribal art, mythology, and for his ability to convey stories and information in an intricate and engaging manner. Nakamura's ability to render humanity in such primal, edgy hues has captured the attention of clients like Time magazine, US News and World Report, and the Los Angeles Times. His paintings have enlivened the pages of many other books and publications, as well as the 2002 Winter Olympics opening and closing ceremonies' programs. Nakamura has been profiled in Communication Arts, Step Inside Design, Confetti and Southwest Art magazines. He is proud to be the recipient of over two hundred awards of excellence. Nakamura splits his time between commercial and fine art projects. His work is in numerous private and corporate collections, including Wynonna Judd, Chick Corea, and US embassies around the world. Nakamura resides in Santa Fe, New Mexico with his wife Kathleen and children Paloma and Kai. [www.joelnakamura.com](http://www.joelnakamura.com)

### ORFF-AFRIQUE • Dr. Kofi Gbolonyo, Vancouver, Canada

Dr. Kofi Gbolonyo is an Assistant Professor of Music and African Studies at the University of British Columbia, Canada. He is the founder and director of Nunya Music Academy, Dzodze, Ghana and the Orff-Afrique Annual Summer Course in Ghana. As a specialist in Orff-Schulwerk and multicultural music education, Dr. Gbolonyo has over 25 years of experience teaching children and adults of all ages at different levels of education in many different countries and cultures. He received his Level III Orff Certification from the San Francisco Orff Course; holds a PhD and MA in Ethnomusicology and a Graduate Certificate in African Studies from the University of Pittsburgh, USA. He earned his BA in Linguistics and Music Theory from the University of Ghana and a Professional B.Ed. in Ewe Language and Music Education from the University of Education, Winneba, Ghana. Kofi is also a faculty of the World Music Drumming Workshops Ltd. Kofi is an internationally recognized music educator, performer, and scholar. He has presented his works and research in many countries in Asia, Europe, South America, Africa, and in many states and provinces in North America. [www.ghanaschoolproject.com](http://www.ghanaschoolproject.com)



### THE PASSIONATE PHOTOGRAPHER • Steve Simon, New York, New York



Steve Simon has been passionate about documenting the beauty and drama of the human condition his entire photographic life. The author of five critically-acclaimed photography books with works in major museum collections worldwide, he is on the faculty of the International Center of Photography (ICP) in New York. He has been published and profiled in a variety of magazines: *Photo District News*, *New York Times Magazine*, *Life*, *Harpers*, *People*, and *Walrus* among them. Corporate clients include Nikon, SanDisk, Sony Music, and Apple. Among his honors: Art Director's Club NY, Canadian News Photographer of The Year, Global Health Council, NPPA, and PX3. His book *the Passionate Photographer* was chosen one of Amazon's Top Ten Arts and Photography books. Steve is as passionate about teaching as he is photography, leading workshops globally, including PhotoPlus Expo New York, Nikonians, Gulf Photo-Dubai, MacWorld, and Nikon Mentor Series. [www.stevesimonphoto.com](http://www.stevesimonphoto.com)

**PHOTOGRAPHY TECHNICIAN • Ben Long, San Francisco, California**

Ben Long is a San Francisco-based photographer, writer, and teacher. The author of over two dozen books on digital photography and digital video, he is also a senior contributing editor to Macworld magazine, a contributing editor at CreativePro.com, and the author of several best-selling Lynda.com photography courses. His photography clients have included 20th Century Fox, Blue Note Records, Global Business Network, the San Francisco Jazz Festival, the Pickle Family Circus, and Grammy-nominated jazz musicians Don Byron and Dafnis Prieto. He has taught and lectured on photography around the world, including workshops at the Santa Reparata International School of the Arts in Florence and a class for imaging engineers at Apple, Inc. He occasionally dabbles in computer programming and has written image editing utilities that are used by National Geographic, the British Museum, and the White House. Long was an OSAI acting student in 1985. [www.completedigitalphotography.com](http://www.completedigitalphotography.com)



**SCREENPRINT: MONOTYPES AND MORE • Lenore Thomas, Pittsburgh, Pennsylvania**



Lenore Thomas is a mixed-media artist whose current prints and paintings explore abstract forms that layer upon each other to create imagery suggestive of landscape. She is simultaneously interested in the flatness generated by color and the sense of space and perspective created by the abstracted forms. She is represented by Cumberland Gallery in Nashville, Tennessee. Her work has been presented in group and solo exhibitions at venues such as Markel Fine Arts in New York City; Douro Art Museum, Peso da Régua, Portugal; The National Academy in New York City; and Penang State Art Gallery in Penang, Malaysia. She has been a resident fellow at the Vermont Studio Center, Anchor Graphics and the Bemis Center for Contemporary Arts. Thomas received her MFA in Fine Arts from the University of Wisconsin-Madison. She is an Associate Professor in the Department of Studio Arts at the University of Pittsburgh in Pittsburgh, Pennsylvania. [www.lenorethomas.com](http://www.lenorethomas.com)

**PRINTMAKING TECHNICIAN • Marwin Begaye, Norman, Oklahoma**

Marwin Begaye is an assistant professor of painting and printmaking at the University of Oklahoma. His research concentrates on issues of cultural identity, especially the intersection of traditional American Indian culture and pop culture. He has also conducted research in the technical aspects of relief printing and the use of mixed-media. His work has been exhibited nationally across the U.S. and internationally in New Zealand, Argentina, Paraguay, and Estonia. He has received numerous awards, including the Oklahoma Visual Artists Coalition Fellowship.



**WRITING POEMS FOR AND WITH CHILDREN • Marilyn Nelson, Millbrook, New York**



Marilyn Nelson is the author or translator of fifteen poetry books, including *The Fields Of Praise: New And Selected Poems*, which won the 1998 Poets' Prize, *Carver: A Life In Poems*, which won the 2001 Boston Globe/Hornbook Award and the Flora Stieglitz Straus Award, and *Fortune's Bones*, which was a Coretta Scott King Honor Book and won the Lion and the Unicorn Award for Excellence in North American Poetry. In 2013 she published a memoir, *How I Discovered Poetry*. Nelson's honors include two NEA creative writing fellowships, the 1990 Connecticut Arts Award, a Fulbright Teaching Fellowship, a fellowship from the J.S. Guggenheim Memorial Foundation, and the Frost Medal. She was the Poet Laureate of the State of Connecticut from 2001-2006. [www.marilyn-nelson.com](http://www.marilyn-nelson.com)

## OKLAHOMA ARTS INSTITUTE STAFF

### **PRESIDENT & CEO • Julie Cohen, *Norman, Oklahoma***



Julie Cohen is the first alumna of the Oklahoma Summer Arts Institute to serve as OAI's president. Originally from Tulsa, she attended OSAI as a photography student, where she studied with French photographer Bernard Plossu. After receiving an undergraduate degree from the University of Colorado, she worked as a staff member for U.S. Senator David Boren, then earned a juris doctorate from the Tulane School of Law. Prior to coming to OAI, Cohen worked as a federal court law clerk, as an attorney for a Wall Street law firm, and as the director of landscaping at the University of Oklahoma. Cohen has served on the boards of numerous nonprofit organizations. She has been the president of OAI

since 2007.

### **VICE-PRESIDENT & DIRECTOR OF PROGRAMS • Emily Claudé, *Norman, Oklahoma***

A native of Norman, Emily holds a bachelor's degree from the University of Oklahoma and was initiated into Pe-Et, a very cryptic-sounding honor given to the university's Top Ten Seniors. Emily lived in Boston after graduation, where she gained a profound appreciation for Dunkin Donuts and long underwear. She currently serves on the board for the Center for Children & Families in Norman. She and her taller half, Marc, enjoy traveling, playing golf, and doting on their dogs, Charlie & Ozzie. In her artistic endeavors, Emily has dabbled in dance, photography, and talking into microphones, but she is most content when creating educational opportunities for others. Emily has been with OAI for eight years and continually strives to feel half as interesting as the talented artists she meets every year.



### **DIRECTOR OF PROGRAM OPERATIONS • Stephanie Currey, *Oklahoma City, Oklahoma***

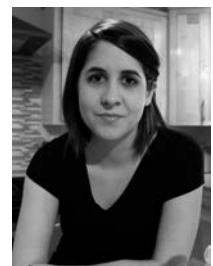


Stephanie Currey has a long history with the Oklahoma Arts Institute. She attended OSAI as a dance student for five years and eventually returned as a counselor. Since 2003, Currey has been a full-time staff member. Currey was accepted to the Joffrey School of Ballet in New York City and studied under such names as Winthrop Corey and John Mangus. She was a member of the Modern Repertory Dance Theatre Company at the University of Oklahoma and also performed with the Oklahoma Festival Ballet. After graduating from the University of Oklahoma, Currey traveled to Brooklyn, New York to pursue graduate work. In addition to working with OAI, Currey is the assistant artistic director for the

Central Oklahoma Ballet Company. Her choreography has been featured in productions of Coppelia, Swan Lake, and Giselle, as well as the restaging of Romeo and Juliet.

### **DIRECTOR OF PUBLIC RELATIONS • Anne Ezzell Peters, *Oklahoma City, Oklahoma***

Anne Peters joined the Oklahoma Arts Institute staff in 2013. She earned a bachelor's degree in fine art from the University of Oklahoma in 2010, with an emphasis in printmaking and ceramics. Anne was born and raised in Enid. While she used to be eager to move away from Oklahoma (and very briefly managed to do so), she has become gradually, astonishingly attached to this state. She lives in Oklahoma City with her husband, Adam, where she makes the world's best lemon meringue pie on a regular basis.





**DIRECTOR OF OUTREACH AND MUSIC COORDINATOR • Jennifer Fletcher, Norman, Oklahoma**



Jennifer Fletcher graduated from Moore High School in 2002 and from Oklahoma City University in 2007. She was selected as “Outstanding Student in Music Education” for the class of 2007 at OCU. After graduation, she was hired as the co-director of bands for Purcell Public Schools. In 2012, Fletcher was voted Purcell Junior High Teacher of the Year and selected as the Purcell Public Schools District Teacher of the Year. Jennifer started working with the Oklahoma Arts Institute part-time in 2013 as the Music Coordinator. Beginning in May 2014, Jennifer joined OAI full-time as the Director of Outreach in addition to Music Coordinator. Outside of the arts, Jennifer is an avid runner. She has finished thirteen half marathons and six full marathons. Jennifer has two dachshunds, Leia and Padme.

**DEVELOPMENT SPECIALIST • Carson Misner, Oklahoma City, Oklahoma**

A lifelong resident of Oklahoma, Carson’s involvement with the arts has been long-lasting and diverse. By first grade, he was already an award-winning artist and sand art master. While attending Sapulpa High School, Carson was a percussionist for the honor band and a member of the drumline. Carson went on to graduate summa cum laude with honors from Oklahoma Baptist University, and performed in a number of stage productions while at OBU, ranging from opera to sketch comedy. For two years, he was head script writer for Campus Activities Board, where he helped produce up to four shows per year. Carson also studied private voice under the direction of Dr. Louima Lilite. Currently, he enjoys singing on the Civic Center stage with the Canterbury Choral Society and on the karaoke stage with his boisterous friends.



**OFFICE MANAGER & EXECUTIVE ASSISTANT • Dalton Funkhouser, Oklahoma City, Oklahoma**



Dalton Funkhouser grew up in Hobart, right outside of Quartz Mountain. He graduated from Oklahoma Baptist University, where he studied religion and philosophy. After graduating from college, he moved to Boston for a social justice fellowship. While there, he took swing dancing classes and immersed himself in the local music culture, eventually working with a local music website. In his free time, Dalton enjoys attending concerts, artist talks, and exhibition openings. At the age of seven, Dalton drew a cat and colored it with crayons, giving it a calico coat. That cat remains his most important work.

**TECHNICAL COORDINATOR • Randi V. Wallace-Hunt, Chicago, Illinois**

Randi V. Wallace-Hunt grew up right down the road from Quartz Mountain in Hobart, Oklahoma, where part of her family still resides. (Go Bearcats!) She received her bachelor’s degree in communication arts with an emphasis in theatre from Southwestern Oklahoma State University in Weatherford. Randi is a graduate of Oklahoma State University, where she received her master’s degree in Theatre Performance, and met her leading man, Thomas Wallace-Hunt. They currently live in Chicago, Illinois, where she is pursuing work in voiceover and musical theatre, and learning to tap. She wants to thank OAI for having her back for her fourth fall session.



OAI THANKS OUR PUBLIC PARTNERS & FALL DONORS



- Albers Family Fund**
- BancFirst Charitable Foundation**
- Raymond and Bessie Kravis Foundation**
- Sam Viersen Family Foundation**
- Williams Foundation**
- Anne and Henry Zarrow Foundation**
- Maxine and Jack Zarrow Family Foundation**