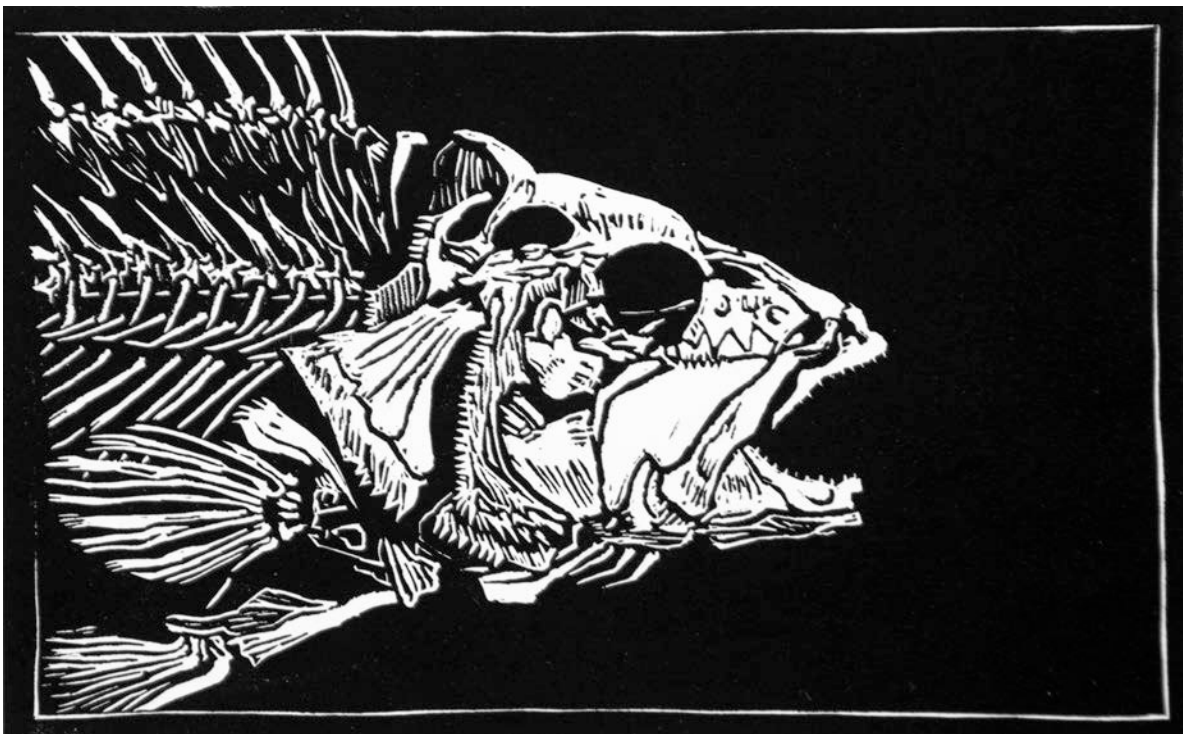




OKLAHOMA FALL ARTS INSTITUTE
at
QUARTZ MOUNTAIN

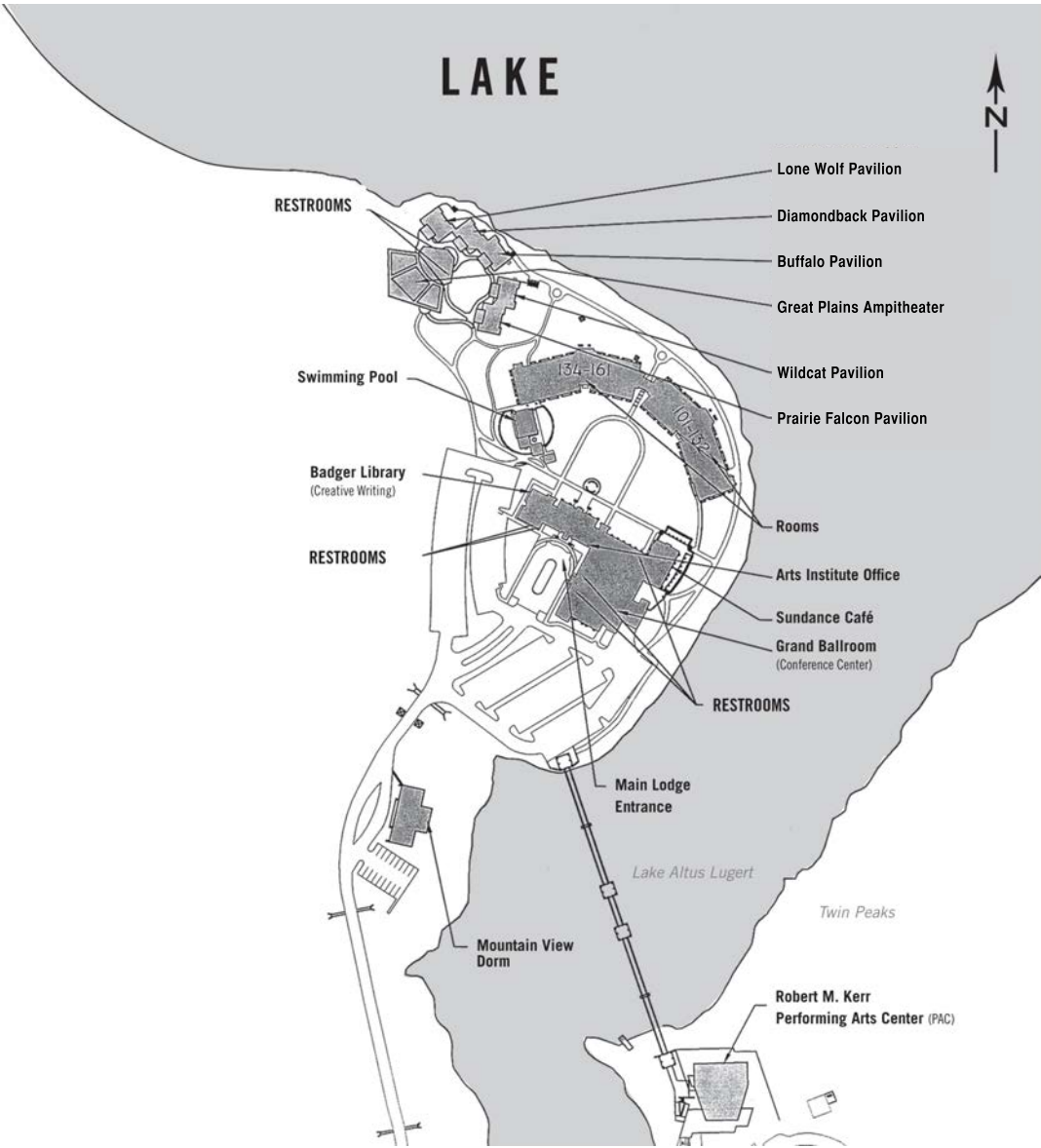
OCTOBER 23 - 26, 2014



School of Fish, Linocut by Yana Dyachkova, 2014 Oklahoma Summer Arts Institute Student

SCHEDULE OF EVENTS
FACULTY BIOS
MAPS & INFORMATION

QUARTZ MOUNTAIN ARTS & CONFERENCE CENTER MAP



Class Locations:

- The Art of Writing for Kids With Disabilities with Deborah Stuart – **Wildcat Pavilion**
- Ballroom Dance with World Dance Arts Foundation – **Performing Arts Center**
- The Fine Art of Travel Photography with Mark Edward Harris – **Lone Wolf Pavilion**
- High-Rolling Monoprints with Heinrich Toh – **Diamondback Pavilion**
- Pastel Painting with Albert Handell – **Prairie Falcon Pavilion**

SCHEDULE OF EVENTS

Thursday, October 23

12 – 1:15 p.m.	Participant Registration / Lodge Lobby
1:30 – 2:30 p.m.	Participant Orientation / Ballroom
2:30 – 5:30 p.m.	Classes / Class Locations
5:30 – 11 p.m.	Open Studios
5:45 – 6:15 p.m.	Meet the Artist: Mark Edward Harris / Ballroom
6:15 – 8:15 p.m.	Dinner / Sundance Café
7:30 – 9 p.m.	Elective: Bookmaking with Deborah Stuart & Will Cabell / Wildcat Pavilion

Friday, October 24

7 – 9 a.m.	Breakfast / Sundance Café
7 – 9 a.m.	Open Studios
8:30 – 9 a.m.	Meet the Artists: Theo & Ganine Derleth / Ballroom
9 a.m. – 12 p.m.	Classes / Class Locations
12 – 2 p.m.	Lunch / Sundance Café
1 – 1:45 p.m.	Conversation with the Artists: Visual Arts Panel Discussion / Ballroom
2 – 5:30 p.m.	Classes / Class Locations
5:30 – 11 p.m.	Open Studios
5:45 – 6:15 p.m.	Meet the Artist: Deborah Stuart / Ballroom
6:15 – 8:15 p.m.	Dinner / Sundance Café

Saturday, October 25

7 – 9 a.m.	Breakfast / Sundance Café
7 – 9 a.m.	Open Studios
8:30 – 9 a.m.	Meet the Artist: Albert Handell / Ballroom
9 a.m. – 12 p.m.	Classes / Class Locations
12 – 2 p.m.	Lunch / Sundance Café
1 – 1:45 p.m.	Nature Walk / Meet in Lodge Lobby <i>Led by Quartz Mountain Naturalist Sue Hokanson</i>
2 – 5:30 p.m.	Classes / Class Locations
5:30 – 11 p.m.	Open Studios
5:45 – 6:15 p.m.	Meet the Artist: Heinrich Toh / Ballroom
6:15 – 8:15 p.m.	Dinner / Sundance Café

Sunday, October 26

7 – 9 a.m.	Breakfast / Sundance Café
7 – 9 a.m.	Open Studios
8:30 – 9:30 a.m.	Classes: Clean Up & Set Up for Walk-Through
9:30 a.m.	Grand Prize Raffle Drawing / Ballroom <i>You must be present to win!</i>
9:30 – 10:30 a.m.	Self-Guided Walk-Through / All Class Locations <i>All artwork must remain displayed until 10:30 a.m.!</i>
10:30 – 11 a.m.	Check-Out / Lodge Lobby

YOGA CLASSES: TBA (Finalized schedule will be posted in classrooms and OAI office.)

THE OKLAHOMA FALL ARTS INSTITUTE AT QUARTZ MOUNTAIN

The Oklahoma Fall Arts Institute (OFAI) is a series of weekend retreats for educators, professional artists, and amateur artists during the months of October and November. Nationally renowned artists teach classes in the visual, performing, and literary arts. Oklahoma public school teachers receive full scholarships to attend OFAI, which includes tuition, room, and board. Major funding for scholarships is provided by private donations secured by the Arts Institute, with matching funds from the Oklahoma State Department of Education. Additional program funding comes from many generous private donors, as well as from the Oklahoma Arts Council and the Oklahoma Tourism and Recreation Department.

Quartz Mountain Arts and Conference Center

Quartz Mountain State Park in Lone Wolf, Oklahoma, overlooks the peaceful waters of Lake Altus-Lugert. An ancient, sacred, and inspiring site, Quartz Mountain was ceremonial grounds for Kiowa, Comanche, Wichita, Apache, and Caddo tribes. Today, Quartz Mountain is home to an Arts and Conference Center, an ideal retreat for arts immersion. With the 700-seat Robert M. Kerr Performing Arts Center, a state-of-the-art darkroom, five studio pavilions, an outdoor amphitheater, and the Beverly Badger Memorial Library, the Arts and Conference Center is the region's artistic epicenter. Nature lovers enjoy hiking and biking trails, bird watching, and unique Oklahoma ecosystems. The Arts and Conference Center at Quartz Mountain is truly an Oklahoma treasure.

Quartz Mountain History

Archeological evidence suggests Paleo-Indian people hunted woolly mammoth near Quartz Mountain between 11,200 and 20,000 years ago. Excavations at the Cooperton Site in Kiowa County provide the earliest known evidence of people in the state of Oklahoma.

Spain and France traded Quartz Mountain several times before the U.S. bought the area as part of the Louisiana Purchase in 1803. Several Native American tribes occupied the area until the late 1880s. In 1887, Quartz Mountain was affected by the Gold Rush, but the U.S. military regained control of the region and opened the land to white settlement in 1901. In 1937, Quartz Mountain officially became a state park.

The tiny town of Lugert was flooded to create a municipal water supply for Altus in 1927. Today, Lake Altus-Lugert also provides irrigation for 48,000 acres of southwestern Oklahoma farmland.

Quartz Mountain Ecology

Quartz Mountain State Park lies in a "buffer zone" between drier western climates and wetter eastern ones. As a result, there is a great diversity of habitats and plant and animal species inside of the park.

Quartz Mountain is in the mixed-grass plains district. Tall grasses and herbs grow on valley floors, while short grasses, prickly-pear, and yucca grow on the unprotected hilltops. The most common type of tree in Quartz Mountain State Park is the scrub oak. Many types of flowers grow at Quartz Mountain, including gaillardia (Indian Blanket), coreopsis, prairie larkspur, sunflower, spiderwort and milkweed.

Three distinct habitat regions ensure the presence of a variety of amphibians and reptiles. The eastern bullfrog and the narrow-mouthed salamander live near the lake and a variety of toads and lizards live on the hilltops. Several species of snakes, including the rattlesnake, live in the hills and in the central region of the park. Many mammalian species also make Quartz Mountain their

home, including the bobcat, eastern cottontail rabbit, desert cottontail, raccoon, jackrabbit, deer mouse, ground squirrel, coyote, and beaver.

Quartz Mountain State Park is a paradise for bird watchers. The majestic bald eagle winters at Quartz Mountain, and white pelicans and Canadian geese migrate through the park in the spring and fall. In the summer, the Eastern black-chinned hummingbird, bluebird, flickers, woodpecker, and wren live at Quartz Mountain. The lake and streams draw ducks and cranes. Red-tailed hawks and great horned owls make the mountains and grasslands their permanent homes.

Since Quartz Mountain State Park is a region of high diversity and physiographic contrast, the area is particularly suited for the occurrence of rare or endangered species. Some of the rare and endangered flora and fauna found at Quartz Mountain include the prairie falcon, golden eagle, bald eagle, green toad, mountain lion, mountain barrel cactus, waterfalls phlox, and western live oak.

Quartz Mountain Art Collection

Owned by the Oklahoma Arts Institute, the majority of the Quartz Mountain Art Collection is on permanent loan to the state of Oklahoma for exhibition at the Conference Center. The art collection serves as a visual record of the history of Quartz Mountain and the Arts Institute. A self-guided walking tour booklet is available to borrow or purchase at the OFAI office or the lodge front desk.

The collection is built around a series of eight murals displayed in the lodge lobby entitled *Quartz Mountain: Sacred Ground*, by Oklahoma artist Mike Larsen. The first four murals, *The Past*, focus on Kiowa history, including the forced relocation from Yellowstone to Oklahoma, the sacred Sundance, the great Kiowa chief Satanta, and the Black Legging Warrior Society. The last four murals, *The Future*, explore Quartz Mountain as a center of arts study, with depictions of Oklahoma Arts Institute faculty and students.

Sculptures by Allan Houser and Jesús Moroles adorn the lodge lobby, and Fritz Scholder's artwork is featured in the lodge hallway. Two large paintings of deer by Oklahoman Joe Andoe adorn the ballroom foyer. In the Sundance Café, Don Nice's paintings portray the natural environment of Quartz Mountain and OSAI disciplines. Each guestroom at Quartz Mountain includes an original print by Daniel Kiacz, a great supporter of the Oklahoma Arts Institute. Outside, large-scale tree sculptures by Israeli artist Menashe Kadishman are the focal point of the courtyard and gardens.

Works by Summer Arts Institute students are also on display in the lodge. Visitors enjoy large-scale portraits of Quartz Mountain insects by 1992 drawing and painting students. Near the ballroom, photographs created by OSAI students from 1988-1993 are on display, and inside the ballroom there is a mural depicting earth, water, air, and fire, created by 2000 OSAI drawing and painting students.

OFAI FACULTY

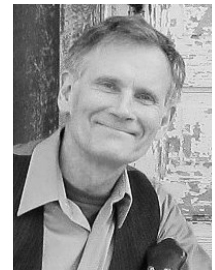
THE ART OF WRITING FOR KIDS WITH DISABILITIES • Deborah Stuart, *Wentworth, New Hampshire*



Deborah Stuart, from Wentworth, NH, is a teaching artist and trainer in the role of the arts in learning for students with diverse needs and disabilities. She has an M. Ed. from Lesley University. Deborah was Editor and Contributing Writer for the Writing in Inclusive Settings series, which was funded by VSA, an affiliate of the John F. Kennedy Center in Washington, D.C., through funding from the federal DOE. Deborah is active as a presenter, writer, and trainer in the area of the arts in learning, both in the US and abroad. She has been core faculty for the VSA International Institutes on the Arts and Education.

THE ART OF WRITING FOR KIDS WITH DISABILITIES • Will Cabell, *Ashland, New Hampshire*

Will Cabell has been a teaching artist in New England for over thirty years. Will has taught in Montessori settings, Waterville Academy, and Tamworth Learning Circles. Currently he teaches art and music at the Monarch School in Rochester, NH for youngsters with severe disabilities. Will holds a Master of Education in Integrated Arts from Plymouth State University.



BALLROOM DANCE • Ganine Derleth, *Marathon, Florida*



Ganine Giorgione Derleth is a professional Ballroom/Latin dance champion, a United States Dancesport Top Teacher, and co-owner of Theo & Ganine's Dance Center. A Broadway triple-threat singer/dancer/actress in shows such as "the Will Rogers Follies," "42nd Street," and "A Chorus Line" and a Radio City Music Hall Rockette, Ganine has also performed on the Grammy's, the Tony's, The Kennedy Center Honors, for Columbia Pictures, the Rainbow Room, Tavern on the Green, Lincoln Center, Good Morning America, the Today Show, and in America's first Olympic Dance Team. She opened for Sammy Davis Jr. and Jerry Lewis in Las Vegas, was the dance coach for Tony Bennett's award winning music video "Steppin' Out", and Cleopatra for Caesars Palace. Ganine is the owner of Giorgione Fine Art, a Rotarian, member of Marathon Business and Professional Women, Chamber of Commerce, and board member of the Florida Keys Council of the Arts.

BALLROOM DANCE • Theo Derleth, *Marathon, Florida*

Theo Derleth is a five-time United States Top Teacher in all four styles (International Standard, International Latin, American Smooth, and American Rhythm) and twice honored as Top Teacher at World Championships. Theo has produced and choreographed shows for stage, television, and film. As an ambassador for the ballroom dance industry, Theo reached around the world to bring top dance champions to the United States. He was a driving force and strong influence to the influx of foreign competitors in America by securing them visas, sponsorship, housing, training, and employment. Many are now the top dancers representing the United States as well as teachers and studio owners.

Theo has touched countless lives in the dance industry. Breaking down borders and encouraging the exchange of information, techniques, and styles, the dance standard has been raised and will continue to grow. Theo and his student Bobbie Fitzpatrick are WDC World Pro/Am Ballroom Champions.



THE FINE ART OF TRAVEL PHOTOGRAPHY • Mark Edward Harris, Los Angeles, California



After graduating from California State University, Los Angeles with a Master of Arts degree in Pictorial/Documentary History, Mark started his professional photography career doing the stills for the Merv Griffin Show. When the show ended in 1986 he set off on a four-month trek across the Pacific and throughout Southeast Asia, China, and Japan. The images created on that trip brought attention to his travel and documentary photography. His editorial work has since appeared in hundreds of publications including Life, GEO, Conde Nast Traveler, AFAR, the Los Angeles Times Sunday Magazine, and the London Sunday Times Travel Magazine. His books include Faces of the Twentieth

Century: Master Photographers and Their Work, The Way of the Japanese Bath, Wanderlust, North Korea, South Korea, and Inside Iran. Assignments, exhibitions and speaking engagements have taken the Los Angeles-based photographer to 85 countries on six continents. www.markedwardharris.com

PHOTOGRAPHY TECHNICIAN • Ben Long, San Francisco, California

Ben Long is a San Francisco-based photographer, writer, and teacher. The author of over two dozen books on digital photography and digital video, he is also a senior contributing editor to Macworld magazine, a contributing editor at CreativePro.com, and the author of several best-selling Lynda.com photography courses. His photography clients have included 20th Century Fox, Blue Note Records, Global Business Network, the San Francisco Jazz Festival, the Pickle Family Circus, and Grammy-nominated jazz musicians Don Byron and Dafnis Prieto. He has taught and lectured on photography around the world, including workshops at the Santa Reparata International School of the Arts in Florence and a class for imaging engineers at Apple, Inc. He occasionally dabbles in computer programming and has written image editing utilities that are used by National Geographic, the British Museum, and the White House. Long was an OSAI acting student in 1985. www.completedigitalphotography.com



HIGH-ROLLING MONOPRINTS • Heinrich Toh, Kansas City, Missouri



Heinrich Toh is a Singapore-born studio artist and co-owner of Fraction print studio/exhibition space, in Kansas City. He is graduate of the Cleveland Institute of Art and the La Salle College of the Arts. Inspired by culture, memories of past and present, his work examines identity, displacement, and assimilation that comes from the passage of time, relocation, and travel. He has taught workshops at Pratt Fine Arts Center in Seattle, the Sun Vally Center For the Arts, Bethel College, Newton Kansas; Platetone Print Shop, Nashville; Inkubator Press and Center for Ink & Paper Arts in Kansas City. Toh has exhibited at the Wing Luke Asian Museum and galleries around the country where his work is in private and public collections. When he is not making art, he loves spending time in the kitchen creating culinary bedlam and does cook a mean dish of noodles. View his work at www.heinrichtoh.com.

PRINTMAKING TECHNICIAN • Marwin Begaye, Norman, Oklahoma

Marwin Begaye is an assistant professor of painting and printmaking at the University of Oklahoma. His research concentrates on issues of cultural identity, especially the intersection of traditional American Indian culture and pop culture. He has also conducted research in the technical aspects of relief printing and the use of mixed-media. His work has been exhibited nationally across the U.S. and internationally in New Zealand, Argentina, Paraguay, and Estonia. He has received numerous awards, including the Oklahoma Visual Artists Coalition Fellowship.



PASTEL PAINTING • Albert Handell, Santa Fe, New Mexico



Albert Handell authored five tabletop art books (Watson/Guptill Fine Art Publications: NYC) on his pastel and oil painting techniques. Holds well-received sold-out painting workshops throughout the US and abroad. In 1987 the Pastel Society of America (NYC) honored him by electing him into the Pastel Society Hall of Fame. Has been written about, more than once, in every art magazine that deals with realism. For a period of 15 years (1970-1985) Albert Handell's pastels were included in every book published on pastels in the USA. His pastels enjoy an international reputation. He is an award-winning artist for both his pastels and oils and is frequently asked to be a judge or a juror. There was a museum retrospective of his pastels in 2007 at the Butler Institute of American Art in Youngstown, OH. He lives and paints in Santa Fe, NM.www.alberthandell.com

OKLAHOMA ARTS INSTITUTE STAFF

PRESIDENT & CEO • Julie Cohen, Norman, Oklahoma

Julie Cohen is the first alumna of the Oklahoma Summer Arts Institute to serve as OAI's president. Originally from Tulsa, she attended OSAI as a photography student, where she studied with French photographer Bernard Plossu. After receiving an undergraduate degree from the University of Colorado, she worked as a staff member for U.S. Senator David Boren, then earned a juris doctorate from the Tulane School of Law. Prior to coming to OAI, Cohen worked as a federal court law clerk, as an attorney for a Wall Street law firm, and as the director of landscaping at the University of Oklahoma. Cohen has served on the boards of numerous nonprofit organizations. She has been the president of OAI since 2007.



VICE-PRESIDENT & DIRECTOR OF PROGRAMS • Emily Claudé, Norman, Oklahoma



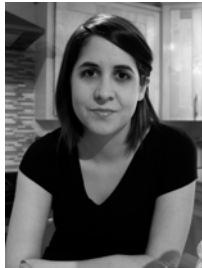
A native of Norman, Emily holds a bachelor's degree from the University of Oklahoma and was initiated into Pe-Et, a very cryptic-sounding honor given to the university's Top Ten Seniors. Emily lived in Boston after graduation, where she gained a profound appreciation for Dunkin Donuts and long underwear. She currently serves on the board for the Center for Children & Families in Norman. She and her taller half, Marc, enjoy traveling, playing golf, and doting on their dogs, Charlie & Ozzie. In her artistic endeavors, Emily has dabbled in dance, photography, and talking into microphones, but she is most content when creating educational opportunities for others. Emily has been with OAI for eight years and continually strives to feel half as interesting as the talented artists she meets every year.

DIRECTOR OF PROGRAM OPERATIONS • Stephanie Currey, Oklahoma City, Oklahoma

Stephanie Currey has a long history with the Oklahoma Arts Institute. She attended OSAI as a dance student for five years and eventually returned as a counselor. Since 2003, Currey has been a full-time staff member. Currey was accepted to the Joffrey School of Ballet in New York City and studied under such names as Winthrop Corey and John Mangus. She was a member of the Modern Repertory Dance Theatre Company at the University of Oklahoma and also performed with the Oklahoma Festival Ballet. After graduating from the University of Oklahoma, Currey traveled to Brooklyn, New York to pursue graduate work. In addition to working with OAI, Currey is the assistant artistic director for the Central Oklahoma Ballet Company. Her choreography has been featured in productions of Coppelia, Swan Lake, and Giselle, as well as the restaging of Romeo and Juliet.



DIRECTOR OF PUBLIC RELATIONS • Anne Ezzell Peters, Oklahoma City, Oklahoma



Anne Peters joined the Oklahoma Arts Institute staff in 2013. She earned a bachelor's degree in fine art from the University of Oklahoma in 2010, with an emphasis in printmaking and ceramics. Anne was born and raised in Enid. While she used to be eager to move away from Oklahoma (and very briefly managed to do so), she has become gradually, astonishingly attached to this state. She lives in Oklahoma City with her husband, Adam, where she makes the world's best lemon meringue pie on a regular basis.

DIRECTOR OF OUTREACH AND MUSIC COORDINATOR • Jennifer Fletcher, Norman, Oklahoma

Jennifer Fletcher graduated from Moore High School in 2002 and from Oklahoma City University in 2007. She was selected as "Outstanding Student in Music Education" for the class of 2007 at OCU. After graduation, she was hired as the co-director of bands for Purcell Public Schools. In 2012, Fletcher was voted Purcell Junior High Teacher of the Year and selected as the Purcell Public Schools District Teacher of the Year. Jennifer started working with the Oklahoma Arts Institute part-time in 2013 as the Music Coordinator. Beginning in May 2014, Jennifer joined OAI full-time as the Director of Outreach in addition to Music Coordinator. Outside of the arts, Jennifer is an avid runner. She has finished thirteen half marathons and six full marathons. Jennifer has two dachshunds, Leia and Padme.



TECHNICAL COORDINATOR • Randi V. Wallace-Hunt, Chicago, Illinois



Randi V. Wallace-Hunt grew up right down the road from Quartz Mountain in Hobart, Oklahoma, where part of her family still resides. (Go Bearcats!) She received her bachelor's degree in communication arts with an emphasis in theatre from Southwestern Oklahoma State University in Weatherford. Randi is a graduate of Oklahoma State University, where she received her master's degree in Theatre Performance, and met her leading man, Thomas Wallace-Hunt. They currently live in Chicago, Illinois, where she is pursuing work in voiceover and musical theatre, and learning to tap. She wants to thank OAI for having her back

for her fourth fall session.

OAI THANKS OUR PUBLIC PARTNERS & FALL DONORS



- Albers Family Fund**
- BancFirst Charitable Foundation**
- Raymond and Bessie Kravis Foundation**
- Sam Viersen Family Foundation**
- Williams Foundation**
- Anne and Henry Zarrow Foundation**
- Maxine and Jack Zarrow Family Foundation**