



**OKLAHOMA FALL  
ARTS INSTITUTE**  
QUARTZ MOUNTAIN

**OCTOBER 6-9, 2016**  
**SURVIVAL GUIDE**



# QUARTZ MOUNTAIN ARTS & CONFERENCE CENTER MAP

## CLASS LOCATIONS:

- Discovering and Creating Good Composition (Photography) – **LONE WOLF PAVILION**
- Get Some Work Done (Memoir Writing) – **BEVERLY BADGER MEMORIAL LIBRARY**
- Monotype/Monoprint: Ink to Page – **BUFFALO PAVILION & DIAMONDBACK PAVILION**
- Nature, Wax, Fiber, and the Stitched Line (Fiber Arts) – **WILDCAT PAVILION**
- Shakespeare and Autism – **BALLROOM**



# SCHEDULE OF EVENTS

## THURSDAY, OCTOBER 6

- 12 – 1:15 PM** Participant Registration / Lodge Lobby  
**1:30 – 2:30 PM** Participant Orientation / Ballroom  
**2:30 – 5:30 PM** Classes / Class Locations  
**5:30 – 11 PM** Open Studios  
**5:45 – 6:15 PM** Meet the Artists: Konrad Eek & Ben Long / Ballroom  
**6:15 – 6:45 PM** Meet the Artist: Oscar Gillespie / Ballroom  
**6:30 – 8:30 PM** Dinner / Sundance Café  
**7 – 9 PM** Screenprinting / Amphitheater

## FRIDAY, OCTOBER 7

- 6:30 – 9 AM** Breakfast / Sundance Café  
**7 – 7:45 AM** Yoga / Ballroom  
**7 – 9 AM** Open Studios  
**9 AM – 12 PM** Classes / Class Locations  
**12 – 2 PM** Lunch / Sundance Café  
**2 – 5:30 PM** Classes / Class Locations  
**5:30 – 11 PM** Open Studios  
**5:45 – 6:15 PM** Meet the Artist: Jo Fittell / Ballroom  
**6:15 – 6:45 PM** Meet the Artist: Robin Post / Ballroom  
**6:30 – 8:30 PM** Dinner / Sundance Café  
**6:45 – 7:30 PM** Yoga / Ballroom

## SATURDAY, OCTOBER 8

- 6:30 – 9 AM** Breakfast / Sundance Café  
**7 – 7:45 AM** Yoga / Ballroom  
**7 – 9 AM** Open Studios  
**9 AM – 12 PM** Classes / Class Locations  
**12 – 2 PM** Lunch / Sundance Café  
**1:15 – 1:45 PM** Guided Meditation / Ballroom  
**2 – 5:30 PM** Classes / Class Locations  
**5:30 – 11 PM** Open Studios  
**5:45 – 6:15 PM** Meet the Artist: Abigail Thomas / Ballroom  
**6 – 8 PM** Dinner / Sundance Café

## SUNDAY, OCTOBER 9

- 6:30 – 8:30 AM** Breakfast / Sundance Café  
**7 – 9 AM** Open Studios  
**8:30 – 9:30 AM** Classes: Clean Up & Set Up for Walk-Through  
**9:30 AM** Grand Prize Raffle Drawing / Ballroom  
**9:30 – 10:30 AM** Self-Guided Walk-Through All Class Locations  
***All artwork must remain displayed until 10:30am!  
Don't leave belongings in the classroom after the walk-through!***  
**10:30 – 11 AM** Check-Out / Lodge Lobby

# THE OKLAHOMA FALL ARTS INSTITUTE AT QUARTZ MOUNTAIN

**THE OKLAHOMA FALL ARTS INSTITUTE (OFAI)** is a series of weekend retreats for educators, professional artists, and amateur artists each fall. Nationally renowned artists teach classes in the visual, performing, and literary arts. Oklahoma public school teachers receive full scholarships to attend OFAI, which includes tuition, room, and board. Major funding for scholarships is provided by private donations secured by the Arts Institute, with matching funds from the Oklahoma State Department of Education. Additional program funding comes from many generous private donors, as well as from the Oklahoma Arts Council and the Oklahoma Tourism and Recreation Department.

## QUARTZ MOUNTAIN ARTS AND CONFERENCE CENTER

Quartz Mountain State Park in Lone Wolf, Oklahoma, overlooks the peaceful waters of Lake Altus-Lugert. An ancient, sacred, and inspiring site, Quartz Mountain was ceremonial grounds for Kiowa, Comanche, Wichita, Apache, and Caddo tribes. Today, Quartz Mountain is home to an Arts and Conference Center, an ideal retreat for arts immersion. With the 700-seat Robert M. Kerr Performing Arts Center, a state-of-the-art darkroom, five studio pavilions, an outdoor amphitheater, and the Beverly Badger Memorial Library, the Arts and Conference Center is the region's artistic epicenter. Nature lovers enjoy hiking and biking trails, bird watching, and unique Oklahoma ecosystems. The Arts and Conference Center at Quartz Mountain is truly an Oklahoma treasure.

## QUARTZ MOUNTAIN HISTORY

Archaeological evidence suggests Paleo-Indian people hunted woolly mammoth near Quartz Mountain between 11,200 and 20,000 years ago. Excavations at the Cooperton Site in Kiowa County provide the earliest known evidence of people in the state of Oklahoma.

Spain and France traded Quartz Mountain several times before the U.S. bought the area as part of the Louisiana Purchase in 1803. Several Native American tribes occupied the area until the late 1880s. In 1887, Quartz Mountain was affected by the Gold Rush, but the U.S. military regained control of the region and opened the land to white settlement in 1901. In 1937, Quartz Mountain officially became a state park.

The tiny town of Lugert was flooded to create a municipal water supply for Altus in 1927. Today, Lake Altus-Lugert also provides irrigation for 48,000 acres of southwestern Oklahoma farmland.

## QUARTZ MOUNTAIN ECOLOGY

Quartz Mountain State Park lies in a "buffer zone" between drier western climates and wetter eastern ones. As a result, there is a great diversity of habitats and plant and animal species inside of the park.

Quartz Mountain is in the mixed-grass plains district. Tall grasses and herbs grow on valley floors, while short grasses, prickly-pear, and yucca grow on the unprotected hilltops. The most common type of tree in Quartz Mountain State Park is the scrub oak. Many types of flowers grow at Quartz Mountain, including gaillardia (Indian Blanket), coreopsis, prairie larkspur, sunflower, spiderwort, and milkweed.

Three distinct habitat regions ensure the presence of a variety of amphibians and reptiles. The eastern bullfrog and the narrow-mouthed salamander live near the lake and a variety of toads and lizards live on the hilltops. Several species of snakes, including the rattlesnake, live in the hills and in the central region of the park. Many mammalian species also make Quartz Mountain their home, including the bobcat, eastern cottontail rabbit, desert cottontail, raccoon, jackrabbit, deer mouse, ground squirrel, coyote, and beaver.

Quartz Mountain State Park is a paradise for bird watchers. The majestic bald eagle winters at Quartz Mountain, and white pelicans and Canadian geese migrate through the park in the spring and fall. In the summer, the Eastern black-chinned hummingbird, bluebird, flicker, woodpecker, and wren live at Quartz Mountain. The lake and streams draw ducks and cranes. Red-tailed hawks and great horned owls make the mountains and grasslands their permanent homes.

Since Quartz Mountain State Park is a region of high diversity and physiographic contrast, the area is particularly suited for the occurrence of rare or endangered species. Some of the rare and endangered flora and fauna found at Quartz Mountain include the prairie falcon, golden eagle, bald eagle, green toad, mountain lion, mountain barrel cactus, waterfalls phlox, and western live oak.

### **QUARTZ MOUNTAIN ART COLLECTION**

Owned by the Oklahoma Arts Institute, the majority of the Quartz Mountain Art Collection is on permanent loan to the state of Oklahoma for exhibition at the Conference Center. The art collection serves as a visual record of the history of Quartz Mountain and the Arts Institute. A self-guided walking tour booklet is available to borrow or purchase at the OFAI office or the lodge front desk.

The collection is built around a series of eight murals displayed in the lodge lobby entitled *Quartz Mountain: Sacred Ground*, by Oklahoma artist Mike Larsen. The first four murals, *The Past*, focus on Kiowa history, including the forced relocation from Yellowstone to Oklahoma, the sacred Sundance, the great Kiowa chief Satanta, and the Black Legging Warrior Society. The last four murals, *The Future*, explore Quartz Mountain as a center of arts study, with depictions of Oklahoma Arts Institute faculty and students.

Sculptures by Allan Houser and Jesús Morales adorn the lodge lobby, and Fritz Scholder's artwork is featured in the lodge hallway. Two large paintings of deer by Oklahoman Joe Andoe adorn the ballroom foyer. In the Sundance Café, Don Nice's paintings portray the natural environment of Quartz Mountain and OSAI disciplines. Each guestroom at Quartz Mountain includes an original print by Daniel Kiacz, a great supporter of the Oklahoma Arts Institute. Outside, large-scale tree sculptures by Israeli artist Menashe Kadishman are the focal point of the courtyard and gardens.

Works by Summer Arts Institute students are also on display in the lodge. Visitors enjoy large-scale portraits of Quartz Mountain insects by 1992 drawing and painting students. Near the ballroom, photographs created by OSAI students from 1988-1993 are on display, and inside the ballroom there is a mural depicting earth, water, air, and fire, created by 2000 OSAI drawing and painting students.

# **WORKSHOP DESCRIPTIONS**

## ***DISCOVERING AND CREATING GOOD COMPOSITION (PHOTOGRAPHY)***

The process of creating a photographic composition is an odd mix of discovery, recognition, craft and active manipulation. In this course, Ben Long and Konrad Eek will help you better understand the curious alchemical process that leads to a good composition. Operating from the assumption that compositional aesthetic is hard-wired into everyone's brain, we will explore what makes a good composition work. Through lecture, demonstration, exercises, practice and group critique you will dive into an intensive weekend of compositional workouts.

This course is suitable for photographers of all skill levels. Ideally, you'll arrive with a quality digital SLR or mirrorless camera, but any digital camera will do – including a high-quality smartphone camera. In addition to shooting practice, we'll explore some simple post-production workflow concepts (using Adobe Photoshop Lightroom) that will make it easier for you to get from raw images to a refined set of good compositions as quickly as possible.

Quartz Mountain and the surrounding area allows for everything from landscape shooting to portraiture, street photography, photo essay and more, making it an idea location for this fun, intensive study of composition.

## ***GET SOME WORK DONE (MEMOIR WRITING)***

"He was cute. I was clueless. It seemed right." Can you take ten years of your life, reduce them to two pages, and write each sentence with only three words? Now's your chance to find out! Join us for an exploration into memoir writing through daily writing and reading assignments, as well as lively and constructive classroom discussion. Writing exercises will help participants solve challenges, and an emphasis will be placed on making the process fun, rather than writing through grim determination. There is no wrong way to do this, so what have you got to lose?

## ***MONOTYPE/MONOPRINT: INK TO PAGE***

This workshop will start with the exciting technique of making single-level viscosity monotypes that produces special visual effects and multiple colors per pass through the press. The fun really begins when the class explores the creative use of collage, drawing, painting, and extra runs with printing matrices that can include raw materials and stamps. Scraps of drawings and paintings or other printed matter on paper may be used at the beginning of the process, and they may be added as the work progresses. Collaboration and sharing with other participants will be encouraged. Bring those scraps that you have always wanted to use someday to the workshop. Bring copies of old pictures you would like to incorporate with the monotypes. Participants do not have to have a background in printmaking to enjoy the methods we will use to make wonderfully unique impressions with no boundaries as to how they may be worked and manipulated to completion.

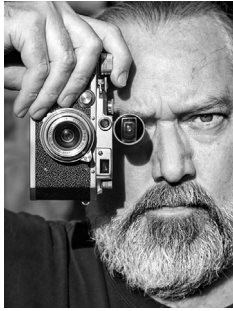
## ***NATURE, WAX, FIBER, AND THE STITCHED LINE (FIBER ARTS)***

Drawn to the rippled texture of sand, the veins of a particular leaf, or an aerial photo of a meandering stream? Explore, honor, and label these personal connections to nature and then draw on them for both their design inspiration and inner meanings. Learn how to manipulate fabrics using wax and flour resists; design your own stamp; print with thickened dye and transfer images onto fabric. Let your own love of nature speak back to you through these materials and come together in a finished or semi-finished stitched piece of fiber art. Sewing machines are not required, but are welcomed on the last day.

## ***SHAKESPEARE AND AUTISM***

Shakespeare and Autism is programming based on an innovative method known as the Hunter Heartbeat Method, developed by UK RSC actress and director, Kelly Hunter. The Hunter Heartbeat Method transforms the complexities of Shakespeare's text and storytelling into a sequence of performance-based games that are specifically tailored to address the communicative challenges faced by those with autism. The Shakespeare and Autism training will provide a cumulative series of workshops to theater practitioners, teachers, psychologists, and those invested in using interactive theater-based activities to address the communicative challenges experienced by those with autism. Comfortable clothing will be necessary for movement and play.

# OFAI FACULTY

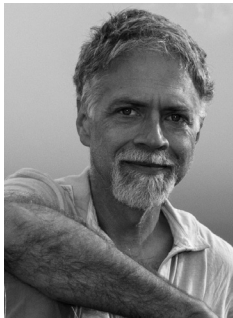


## **DISCOVERING AND CREATING GOOD COMPOSITION (PHOTOGRAPHY)**

**KONRAD EEK**

Instructor / Norman, Oklahoma

Konrad Eek is a photographer, custom framer, and arts educator based in Norman, Oklahoma. A product photography specialist, his portfolio ranges from frying pans to fine art. As a framer his work varies from the simplest frame to multi floor office installations, with a new emphasis on individual hand crafted frames for artists and collectors. As an educator he has served as an adjunct professor for Oklahoma City Community College for over 15 years. Eek has facilitated many workshops for a diverse group of arts organizations and commercial clients. He is the author of many courses and articles for Lynda.com covering framing, exhibiting, photo lighting, Photoshop, and traditional black and white photography. He has also served the Oklahoma Arts Institute in a number of roles for over 25 years.



## **DISCOVERING AND CREATING GOOD COMPOSITION (PHOTOGRAPHY)**

**BEN LONG**

Instructor / San Francisco, California

Ben Long is a San Francisco-based photographer, writer, and teacher. The author of over two dozen books on digital photography and digital video, he is also a senior contributing editor to *Macworld* magazine, a contributing editor at CreativePro.com, and the author of several best-selling Lynda.com photography courses. His photography clients have included 20th Century Fox, Blue Note Records, Global Business Network, the San Francisco Jazz Festival, the Pickle Family Circus, and Grammy-nominated jazz musicians Don Byron and Dafnis Prieto. He has taught and lectured on photography around the world, including workshops at the Santa Reparata International School of the Arts in Florence and a class for imaging engineers at Apple, Inc. He occasionally dabbles in computer programming and has written image editing utilities that are used by National Geographic, the British Museum, and the White House. Long was an OSAI acting student in 1985.



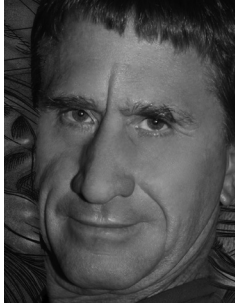
## **GET SOME WORK DONE (MEMOIR WRITING)**

**ABIGAIL THOMAS**

Instructor / Woodstock, New York

Abigail Thomas, the daughter of renowned science writer Lewis Thomas (*The Lives of a Cell*), is the mother of four children and the grandmother of twelve. Her academic education stopped when, pregnant with her oldest daughter, she was asked to leave Bryn Mawr during her first year. She's lived most of her life on Manhattan's Upper West Side, and was for a time a book editor and for another time a book agent. Then she started writing for publication. Her first three books, *Getting Over Tom*, *An Actual Life*, and *Herb's Pajamas*, were works of fiction. Her memoir, *A Three Dog Life*, was named one of the best books of 2006 by the *Los Angeles Times* and *The Washington Post*. It won the 2006 Inspirational Memoir Award given by Books for A Better Life. She is also author of *Safekeeping*, a memoir, *Thinking About Memoir*, and *What Comes Next and How to Like It*.





## **MONOTYPE/MONOPRINT: INK TO PAGE**

### **OSCAR GILLESPIE**

instructor / Peoria, Illinois

Oscar J. Gillespie is a Professor of Art at Bradley University, where he has been a member of the faculty since January of 1986. He teaches printmaking and drawing. As a printmaker, he is noted for his expertise in monotypes and in intaglio, especially metal-plate engraving. Exhibiting widely since 1974, his work has been included in more than 400 solo, group, invitational and juried exhibitions. His work may be found in more than 60 public collections, including the Fogg Museum, Harvard; The Museum of Fine Arts, Boston; Denver Art Museum; Lauren Rogers Museum, Laurel, Mississippi; Walker Art Center, Minneapolis; the Nelson-Atkins Museum, Kansas City; the New York Public Library; the Plains Museum, Fargo, North Dakota; Spencer Museum, Lawrence, Kansas; Bibliotheque Nationale de France, Paris; and the National Museum of Poznan, Poland.



## **MONOTYPE/MONOPRINT: INK TO PAGE**

### **MARWIN BEGAYE**

Printmaking Technician / Norman, Oklahoma

Marwin Begaye is an internationally exhibited printmaker, painter, and nationally recognized graphic designer. As Associate Professor of Painting and Printmaking at the University of Oklahoma's School of Art & Art History, his research has been concentrated on issues of cultural identity, especially the intersection of traditional American Indian culture and pop culture. He also has conducted research in the technical aspects of relief printing and the use of mixed media. His work has been exhibited nationally across the U.S. and internationally in New Zealand, Argentina, Paraguay, Italy, Siberia, and Estonia. He has received numerous awards, including the Oklahoma Visual Artists Coalition Fellowship, First Place at the Red Earth Festival, and Best in Category in Contemporary Painting at the Gallup Inter-Tribal Indian Ceremonial. He has been featured in many publications and is represented by Exhibit C in Oklahoma City.



## **NATURE, WAX, FIBER, AND THE STITCHED LINE (FIBER ARTS)**

### **JO FITSELL**

Instructor / Littleton, Colorado

Jo Fittsell is one of the founders of the vital and exciting organization, Front Range Contemporary Quilters. Her teaching experience includes both children and adults. Jo currently teaches at the Art Students League in Denver and has taught K-12 art classes in Denver Public Schools. She is a "Think 360" artist-in-residence. Her work has been exhibited in galleries and museums throughout the United States and Canada. She teaches marbling, collage, art quilting, and creativity classes. She has been published in *Quilting Arts*, *Quilt National*, and *SAQA* and has artwork in many establishments, including the Denver Seminary, Oracle, and Kaiser Permanente. Interweave Press has published her new DVD on Marbling.



## **SHAKESPEARE AND AUTISM**

### **ROBIN POST**

Instructor / Wilmington, North Carolina

Robin Post is an assistant professor at the University of North Carolina Wilmington (UNCW) where she specializes in acting, voice, movement, devising, and community engagement theatre. Prior to joining the Department of Theatre at UNCW, she taught for ten years with The Ohio State University's (OSU) Department of Theatre. During her tenure at OSU, she was the director of the empirical longitudinal research study, *Shakespeare and Autism*, a component of OSU's partnership with the Royal Shakespeare Company.

Robin recently performed in Los Angeles in a revival of a performance that premiered with the Royal Shakespeare Company's the Other Place Theatre in 2014. The production was an adaptation of "The Tempest" wherein children on the spectrum and professional actors shared the performance space. Robin's most recent research on Shakespeare and Autism will be published by Palgrave Macmillan in book entitled *Creativity and Community Among Autism-Spectrum Youth* in August of 2016.

# OKLAHOMA ARTS INSTITUTE STAFF



## ***JULIE COHEN***

### **PRESIDENT & CEO**

Norman, Oklahoma

Julie Cohen is the first alumna of the Oklahoma Summer Arts Institute to serve as OAI's president. Originally from Tulsa, she attended OSAI as a photography student, where she studied with French photographer Bernard Plossu. After receiving an undergraduate degree from the University of Colorado, she worked as a staff member for U.S. Senator David Boren, then earned a juris doctorate from the Tulane School of Law. Prior to coming to OAI, Cohen worked as a federal court law clerk, as an attorney for a Wall Street law firm, and as the director of landscaping at the University of Oklahoma. Cohen has served on the boards of numerous nonprofit organizations. She has been the president of OAI since 2007.



## ***EMILY CLAUDÉ***

### **VICE PRESIDENT & DIRECTOR OF PROGRAMS**

Norman, Oklahoma

A native of Norman, Emily holds a degree from the University of Oklahoma, where she was initiated into Pe-Et, an honor given to the university's top ten seniors. After graduation, she moved to Boston and worked at Brigham & Women's Hospital. Emily served as president of the board for the Center for Children & Families in Norman upon return to Oklahoma, and currently serves on the advisory committee for the Oklahoma State Fair's Visual Arts Scholarship Event. Her family's ties to Norman include a longstanding involvement in the local arts community, which has given Emily a deep appreciation for the arts. Her personal artistic experience has been well-rounded, pursuing interests in dance, photography, and acting. But Emily found her true calling when she began working at the Oklahoma Arts Institute in 2005. She has been creating educational opportunities for others for over nine years and continually strives to feel half as interesting as the talented artists she meets every year.



## ***SHANA GIBELYOU***

### **DIRECTOR OF DEVELOPMENT**

Oklahoma City, Oklahoma

A native of Ponca City, Shana Gibelyou holds a bachelor's degree in dance management from Oklahoma City University, where she graduated magna cum laude and received the "Outstanding Graduating Senior in Dance Management" award. As a dancer, Shana is an experienced performer, teacher, choreographer, and adjudicator. She has performed at the Jazz Dance World Congress in Wiesbaden, Germany and has performed and taught ballroom, Latin, swing, and country dance at the largest ballroom studio in Oklahoma City. She is also experienced in aerial dance. Shana is the co-founder of a non-profit organization that provides food, clothing, and medical care to over 200 orphans in Sierra Leone, West Africa. She has visited the orphanage ten times over the past seven years. Shana and her husband, Justin, are the proud parents of daughter Elise Joy, born in September 2014. Shana attended the Oklahoma Summer Arts Institute at Quartz Mountain for three years as a modern dancer in high school. This year marks Shana's 13th year as a staff member of the Oklahoma Arts Institute.



**CARSON MISNER**  
**DIRECTOR OF PROGRAM OPERATIONS**  
Oklahoma City, Oklahoma

A lifelong resident of Oklahoma, Carson's involvement with the arts has been long-lasting and diverse. By first grade, he was already an award-winning artist and sand art master. While attending Sapulpa High School, Carson was a percussionist for the honor band and a member of the drumline. Carson went on to graduate summa cum laude with honors from Oklahoma Baptist University, and performed in a number of stage productions while at OBU, ranging from opera to sketch comedy. For two years, he was head script writer for Campus Activities Board, where he helped produce up to four shows per year. Carson also studied private voice under the direction of Dr. Louima Lilite. Currently, he enjoys singing on the Civic Center stage with the Canterbury Choral Society and on the karaoke stage with his boisterous friends.



**MAGGIE BOYETT**  
**ASSISTANT DIRECTOR OF DEVELOPMENT**  
Oklahoma City, Oklahoma

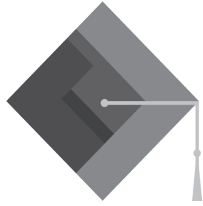
An Oklahoma Native, Maggie grew up in Tulsa, OK and Philadelphia, PA. She attended the Oklahoma Summer Arts Institute from 2008-2010 as a modern dance student and returned as the modern dance liaison in 2014. Maggie holds a BFA in modern dance performance from the University of Oklahoma School of Dance and presents work around the state. Her choreography has most recently been commissioned for the 2016 Oklahoma Contemporary Dance Festival, Norman Music Fest 9, music videos, and public performance art projects. Maggie loves living in Oklahoma City and spoiling the daylight out of her four-legged children, Johnnie and Jackie.



**JOANNA HATHAWAY**  
**TECHNICAL COORDINATOR**  
San Francisco, California

Joanna Hathaway is a freelance video editor based in San Francisco. She divides her time between cutting documentary, commercial, event, and academic videos for a variety of clients nationwide. She is the author of several videography books, the winner of numerous documentary film awards, a certified Apple instructor, and a teacher at the Bay Area Video Coalition and the University of California Berkeley Art Studio. If and when she crawls out of the editing suite, she's most likely found cycle-touring on remote roads or playing Scrabble. Most of her childhood and early adulthood was spent in a theater, both as an actress and behind the scenes. In retrospect, she is certain that it is no coincidence that "Oklahoma!" was her favorite show of all time.

OAI THANKS OUR PUBLIC PARTNERS & FALL DONORS



OKLAHOMA STATE DEPARTMENT OF  
**EDUCATION**  
— CHAMPION EXCELLENCE —



**National  
Endowment  
for the Arts**  
arts.gov



ALBERS FAMILY FUND  
BANCFIRST CHARITABLE FOUNDATION  
EDWARD E. AND HELEN TURNER BARTLETT FOUNDATION  
CRESAP FOUNDATION  
E.L. AND THELMA GAYLORD FOUNDATION  
KIRKPATRICK FOUNDATION  
THE RAYMOND AND BESSIE KRAVIS FOUNDATION  
ONE GAS FOUNDATION  
SOUTHERN OKLAHOMA MEMORIAL FOUNDATION  
MR. AND MRS. JOE DAN TRIGG  
SAM VIERSER FAMILY FOUNDATION  
JEROME WESTHEIMER FAMILY FOUNDATION  
WILLIAMS FOUNDATION  
THE ANNE AND HENRY ZARROW FOUNDATION  
THE MAXINE AND JACK ZARROW FAMILY FOUNDATION